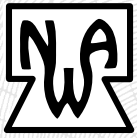


# WOODWORKERS NEWS



Northeastern  
Woodworkers  
Association

November Vol. 33, Number 10

## A Message From the NWA President

*by Kay McCampbell*

Folks,

Here we are, in the midst of Fall. Our beloved trees shedding their gorgeous colors, for us to gather in rustling joy. This month of change has passed so quickly this year. And with it, change in our little group.

Steve Schoenberg has stepped down from his role as Executive Secretary, to pursue a real life. One with the pleasures offered by a growing family, as well as travel and the joys of New York City. This is a well-deserved break. He has been, and will be, handing off his many and varied duties. Please be willing to step up and take one, if offered.

Jimmy Lee has left our membership forever, but not our hearts. Godspeed Jimmy.

By the time you read this, with the shared efforts of the Albany and Mid-Hudson groups, the new Mid-Hudson shop should have heat. Read below for more of the continuing saga of the new building in this issue.

In friendship and sawdust,

Kay

PS - Although my friends tell me it is not an interview, but more of a get-to-know-you meeting, I'll be looking for, and 'interviewing', volunteers for the Executive Secretary position. Step right up, don't be shy...

## Thank You, NWA Members

*By Linda Reiss*

Hearty thanks to all of the members who donated pieces for our booth at the Shaker Holiday Market. The NWA space looks great this year and is jam-packed with one-of-a-kind treasures and useful household items as well.

If you have the opportunity, be sure to stop in at the market where about 80 vendors are offering many types of craft products for your holiday shopping. The market runs through December 15; hours are 10:00-4:00, Tuesday through Sunday.



*Some of the NWA items for sale,*



*... and some more.*

## OFFICERS

*Some recent position changes  
are not yet reflected*

**President** - Kay McCampbell  
nwapresidentkay@gmail.com

**Vice President/Program Chair**  
Lee Hilt  
lhagh@earthlink.net

**Recording Secretary** - Linda Reiss

**Treasurer** - Alan Hayes

**Executive Secretary** - Vacant



## NWA BOARD MEMBERS

Pete Chast  
Mid-Hudson Representative  
Wally Cook  
Board Member at Large  
Dale Lombardo  
Board Member at Large  
Doug Wildes  
Board Member at Large  
Charlie Goddard  
Board Member Emeritus



**Mid-Hudson Chapter**  
Bill Sterling, President



## CHAIR/CONTACT PERSONS

### Auction and Hospitality

Lee Hilt  
nwaauction1@gmail.com

### Education

*Chair* - Chuck Thorne  
nwasearch1@gmail.com  
*Registrar* - Frank Necaie  
nwaeducation1@gmail.com

### Fiske Fund

*Chair* - James Lefebvre  
Nick Piedmont  
Karoline Sears  
Steven Mapes  
Robert Fleury  
Bob Lawless

### Historian

Wayne Distin

### Library

Susan Hill

### LCOC

Ray Puffer

### Membership

Jim Pate  
nwamembers1@gmail.com

### Newsletter Editor

John Michne  
jmichne1@nycap.rr.com

### Publicity

John Olenik

### Showcase Chair

Dave Rustin  
nwa.showcase.chair2@gmail.com

### Totally Turning Chair

Todd Gunter

# Hand Tools SIG Demonstration of Sharpening Saws

*By Susan McDermott*

On October 1, 2024, Dave Parkis invited Aaron Smith for a second visit to the Learning Center for his popular demonstration of restoring and sharpening handsaws. The twelve attending members brought their own rescued saws to resurrect.

Aaron gave us his back story of restoring saws when he bought antique hand saws from a shop in Catskill during the Pandemic. He realized these saws were plentiful in estate and shop auctions, and that some of these saws were once high quality and worth restoring. He now cleans and sharpens them to sell on his website, <https://benchandchisel.com>.

Aaron had a variety of saw vises, including a hand-made one. He buys files from Karate (Italian) and Baco (Lee Valley). He began his demonstration with an old rip saw. Does the saw pull to one side? The tooth set is not matched. Lightly file with a flat file the side of the saw that drifts. Right drift? File the right side of the saw's teeth that need to be reset. Most of you know a rip saw cuts a board with the grain of the wood, and a crosscut saw has beveled teeth to cut across the grain. Sharpening the two types have quite different techniques.

Aaron's slides showed the steps of saw sharpening which will be briefly described below.

1. Look at the saw. Are there any broken teeth? If so, the saw's metal is too brittle. Then clean off the rust. Set the saw in the vise, so that all of the teeth are visible. The vise should be at a comfortable height, so you don't have to bend down. A magnifying glass on the teeth helps your visibility. Use a task light to shine on the tooth as you sharpen. Set the saw in the vise so only the teeth sit above the vise jaws.



*Aaron's commercial vise with the saw secured to level the teeth.*

2. Jointing or leveling: Use a mill (flat) file to level the teeth. Two or three light passes should make all the teeth the same height. Look for the shine of higher teeth and file until they are all even.



## WOODWORKERS NEWS

is published by the Northeastern Woodworkers Association for its members. The Association's aim is to provide a common meeting ground for lovers of woodworking who want to know more about wood and the techniques for forming it. The newsletter is published monthly. The newsletter is available online at [www.woodworker.org](http://www.woodworker.org)



Your next issue of  
**Woodworkers News**

will be published  
in early December

Submissions are due by the  
15th of each month

John Michne, Editor

[jmichne1@nycap.rr.com](mailto:jmichne1@nycap.rr.com)

Elizabeth Keays Graphic Artist  
Designer



### WEBSITE

[www.woodworker.org](http://www.woodworker.org)

Webmaster: Andy Moss  
[nwawebmasterhelp@gmail.com](mailto:nwawebmasterhelp@gmail.com)



### NORTHEASTERN WOODWORKERS ASSOCIATION

P.O. BOX 246

Rexford, New York 12148

[NEWoodwork@yahoo.com](mailto:NEWoodwork@yahoo.com)



*Jointing the teeth*

3. Sharpening the teeth of a rip saw uses a triangular file that best fits the saw's gullets. Aaron buys good files from Lee Valley (Bahco-Portugal). File each tooth 90 degrees to the saw.

TPI	File Size
4 – 5	7-in. regular taper
6 – 7	7-in. slim taper
8	6-in. slim taper
9 – 10	6-in. extra slim taper
11	6-in. double extra slim taper
12 – 14	5-in. double extra slim taper
15 – 20	4-in. double extra slim taper

4. Sharpen each tooth starting at the handle or the tip. Burs will be left on the sides of each tooth which will be dressed with a flat file.
5. Test the saw's cut on a piece of hardwood. Does it pull left or right? Smooth the sides with the flat file. The saw should cut with little effort if it is sharp.

Aaron then addressed the sharpening of crosscut saws which have teeth set alternately to the left and right about 0.002 or 0.003 of an inch and are beveled. These are sharpened every other tooth for the correct set (0-8 degrees for rip and 15 degrees for crosscut).

After the demonstration, the members tried sharpening the saws they brought with Dave and Aaron's guidance. Aaron can be consulted or requested to sharpen saws at his contact email, [aaron@benchandchisel.com](mailto:aaron@benchandchisel.com)



*Aaron's hand-built vise*

# Mid-Hudson News

By Wally Cook

## The Big Moving Day:

Wednesday, October 9 was moving day for the Kaatskill Woodturners. We left our space at the Opdahl property and brought all the stationary equipment to the new shop building at 2076 Sawkill-Ruby Rd. in Kingston. Lathes, bandsaws, drill presses, sharpening stations, compressor, and dust collector – all headed for their new home. It was a bittersweet day: while we had been looking forward to populating the new shop, it was also a day in which Jim Lee – our construction manager and owner of the shop property – was taken off life support at Vassar Hospital and passed away soon after.

## In Memoriam: Jim Lee:

Jim ran his own overhead door business for many years – he was known as the “Door Man” to his customers. He installed all types and sizes, including a 40-foot-tall hangar door at Stewart Airport. Larger than life, he made an impact on everyone he met. Jim was a past-president of the Mid-Hudson Woodworkers and enjoyed furniture making, especially ‘river tables.’

Both Jim and his wife, Debbie, sponsored the plan to build a consolidated workshop on their property to house the Mid-Hudson Woodworkers and the Kaatskill Woodturners. He worked tirelessly to move the project along. Jim fell ill close to the workshop completion, but the shop will be a lasting testament to his big heart.



*After 20 years, the KWA moves out of the Opdahl Shop*



*Greg Lapp and Phil Dudek maneuver a cabinet into place at the new shop*



*Amazingly, everything fits!*



**Outreach Continues:** The Mid-Hudson was active at the Hurley Heritage Day, organized by the Hurley Heritage Society. The community is known for its 18th century stone houses along Main Street and history was on full display. House tours and the museum displays were featured. Artisans, musical groups, and food trucks filled the streets. The Mid-Hudson Woodworkers and the Kaatskill Turners ran a used tool sale. The KWA turned pens with kids. Both efforts were very busy during the day.



*KWA was busy making pens with kids during the event*



*A re-enactor stands guard at Hurley Heritage Day*



*Mid-Hudson Members setting up the tool sale*

## Update on Machine Knowledgeable/Machine Qualified Program

*By Ray Puffer*

The Machine Knowledgeable (MK) training program is the process used to teach NWA members the safe operation of the machines in the Learning Center (the shop) on Railroad Avenue. Classes are typically two or two and a half hours for each machine. Once a member is certified as Machine Knowledgeable (MK) he/she may use that machine, under the supervision of a Machine Qualified (MQ) member. A listing of MK and MQ members is maintained by the Learning Center Operations Committee (LCOC), and is posted on the bulletin board at the front of the shop. All NWA members who use shop facilities must sign the NWA Participation Agreement (PA). The PA list is also posted on the bulletin board.

MK classes are offered for the following machines: Table Saw; Jointer; Thickness Planer; Band Saw; and Drill Press. Classes are scheduled based on available shop times and the availability of instructors. We are working to qualify additional instructors so we can offer more MK classes.

The Scroll saw MK/MQ program is conducted by the Scroll saw SIG. Steve Koonz and Karoline Sears are the SIG leaders.

AWA has its own process for certifying members as Machine Knowledgeable and Machine Qualified. It consists of a 19 step program for MQ certification. After the completion of the first nine steps the member is determined to be Machine Knowledgeable.

“How can I be promoted from Machine Knowledgeable (MK) to Machine Qualified (MQ)?”

This is a frequent question I receive from NWA members taking our Machine Knowledgeable (MK) level training classes. Basically, to be promoted from MK to MQ level you must accumulate significant experience, and be willing/able to mentor others on the safe operation of the machine in question. The decision to certify a member as Machine Qualified (MQ) rests with the Learning Center Operations Committee. An existing MQ member may nominate an MK member for MQ promotion to the LCOC. Also, an MK member may petition the LCOC for promotion to MQ. Such nominations and petitions will be reviewed by the LCOC, and a decision will be rendered.

If you are Machine Qualified and are willing to train others on the safe operation of club equipment, please contact Ray Puffer at ray.puffer@gmail.com. We have developed complete instructional materials for instructors.

## Some Beautiful Carvers' Art

*Submitted by Diane Balch*



*Ernie & Diane Balch CNC routed the Welcome Bear sign from walnut. It measures 8" wide x 9" high x 1 1/8" thick. Diane will apply Tru-Oil Gunstock Finish.*



*Ernie & Diane Balch made the Fireman sign for Diane's brother, who recently retired from 40 years of volunteer firefighting service. It was CNC routed from cherry. The finish is 2 coats of Tru-Oil Gunstock Finish. It measures 12" high x 17" wide x 1 1/8" thick.*

## Sawdust...

Breaking news – Lee Hilt is in North Carolina helping with hurricane recovery. We hope to have a full story in the next issue...I hope someone will attend the Curtis Lumber Halloween party and gets some pix. See <https://bit.ly/4dYv8tz> for details.



# In Case You Missed It

By Lee Hilt

I wasn't able to get pictures of this year's NWA Auction into the September newsletter, so I am offering these at this time. The following are pictures from the Auction and Cash N' Carry sections along with volunteers and attendees.



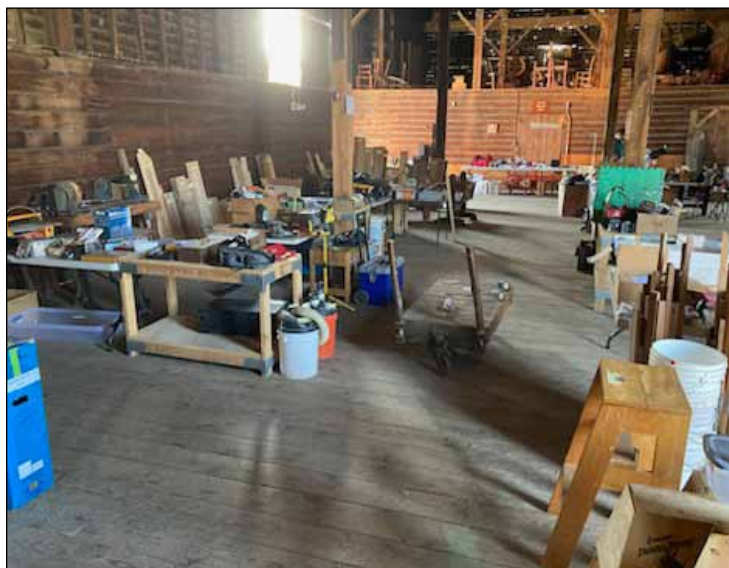
*Lumber and tools section*



*More tools for auction*



*Some nice live edge planks*



*Cash N' Carry section*



*Rick Bird Left) and Todd Gunter, helpers*





Auctioneer Bob Williams (L) and Steve VanDerZee

New to auction this year was Scott Oliver's morning-long woodworking demonstration. Scott demonstrated using a shave horse with a drawknife and spokeshave to shape items like the legs of a stool and spoons. We received many positive comments on Scott's display and thank him for doing this.

Hope to see you next year!

## SPECIAL INTEREST GROUPS

### SPECIAL INTEREST GROUPS (SIGs):

**Adirondack Woodturners Association (AWA)** - The AWA is active throughout the year. General Meetings and Bowl Turning are held the first Wednesday of the month (except in January and July when it is the second Wednesday), at the NWA Learning Center located at 97 Railroad Avenue, Colonie, NY from 5:30 PM to 8:45 PM. **Contact:** Steve VanDerZee, (518) 727-6511 or stevedvz@msn.com.

**Spindle and Pen Turners plus Introduction to Woodworking** - Meets Mondays 9:00 AM to noon and Mondays 5:30 PM – 9:00 PM, including holidays except Christmas. **Contact:** Pam Bucci at (518) 429-6440 or woolglass2@gmail.com. Wednesday "Learn and Turn" sessions occur on alternate Wednesdays at the NWA Learning Center. These sessions run 5:30 PM to 8:45 PM. [www.adirondackwoodturners.com](http://www.adirondackwoodturners.com) **Contact:** Pam Bucci at (518) 429-6440 or woolglass2@gmail.com.

**Kaatskill Woodturners** - Also an AAW Chapter. Meets on the second Saturday of the month at the Hurley Reformed Church, 11 Main St. Hurley, NY 12443. **Contact:** Wally Cook at (845) 338-2193 or wally.cook@gmail.com.

**NWA Crafters** - Meet Tuesdays and Saturdays 9:00 AM to noon. They provide public service woodworking for various charitable organizations, including the Double H Hole in the Woods camp for children, Saratoga Builders Association, the Warren Washington and Albany Counties ARC (A Respectful Commitment), and the Northeast Construction Trades Workforce Coalition which is the non-profit arm of Curtis Lumber. Sharing information, fellowship, education, and relating experiences are a major part of these sessions. **Contact:** Rick Bird [biggrbird@gmail.com](mailto:biggrbird@gmail.com) for more information.

**The NWA Wood Carvers SIG** – Meet Thursdays 5:00-8:30 PM all year at the NWA Learning Center located at 97 Railroad Avenue, Colonie, NY. The goal is to promote the art of wood carving and to have a good time doing it. The only prerequisite is a desire to carve while making new friends. Wood, tools, and patterns are available. **Contact:** Diane Balch at (518) 885-9899 or dbalch1@nycap.rr.com.

**Hand Tool SIG** – Meets on the 1st and 3rd Tuesday of each month at 7:00-9:00 PM in the Herm Finkbeiner Education Center at 97 Railroad Avenue, Colonie, NY. **Contact:** Dave Parkis at (518) 429-6581 for further details: [dparkis@nycap.rr.com](mailto:dparkis@nycap.rr.com).

**Scrollers SIG** – Meets Mondays 5:45 to 8:00 PM - new scrollers welcome. Wednesdays 5:45 to 8:00 PM - machine qualified scrollers only (possible demonstrations) **Contact:** Stephen Koonz (518) 290-0722 (text only)-

**NWA Musical Instruments SIG** – Meets at 97 Railroad Avenue shop 6:00 to 8:00 PM, second Tuesday of the month. **Contacts:** Jon Hedman, [jonwhedman@gmail.com](mailto:jonwhedman@gmail.com), (518) 399-7849; Ray Puffer, [Ray.Puffer@gmail.com](mailto:Ray.Puffer@gmail.com), (518) 272-6421; Eric Marczak, [epm03@hotmail.com](mailto:epm03@hotmail.com), (518) 872-9324.

### CHAPTERS

**NWA Mid-Hudson** - The address and hours for the Mid-Hudson shop to be changed. **Contact:** Bill Sterling [wster1156@aol.com](mailto:wster1156@aol.com) or Wally Cook [wally.cook@gmail.com](mailto:wally.cook@gmail.com) for details.