

WOODWORKERS NEWS



Northeastern
Woodworkers
Association

June 2023, Vol. 32, Number 6

Changes in NWA Leadership

By *Steve Schoenberg, Executive Secretary*

The Annual Meeting in May brought a few changes in the NWA Leadership. We welcome Wally Cook to the NWA Board. Wally is also President of the Kaatskill Woodturners SIG; it's good to have the turner's leadership represented on our board.

Irv Stephens having served for three years as the NWA President has hit his term limit. Rather than taking a well-deserved retirement, he is taking on the Program Vice President role once again. And while we are speaking about Irv, did you know that he is also now serving as our Showcase Chair?

And after twenty years as serving as our club's Executive Secretary, Charlie Goddard is taking a very well-earned retirement. In recognition of service to the NWA throughout more than a quarter century, the Board has bestowed upon Charlie the honorary title of Board Member Emeritus. As long as he remains an NWA member, Charlie is welcome to participate in board meetings in a non-voting capacity.



Charlie and Karen Goddard at an NWA dinner, ten years ago

The position of NWA President was not filled in this year's election and for the time being, our Vice President is serving as acting President. Fortunately, Irv is quite experienced at this job. We have a strong leadership team that works well together.

If you have ideas of how to make the club better and you have some time to share, please consider volunteering to be our President.

So, for your reference, here is a listing of our officers and board members.

Position Available	President
Irv Stephens	Vice President
Paul Ruud	Treasurer
Susan McDermott	Recording Secretary
Steve Schoenberg	Executive Secretary
Pete Chast	Mid-Hudson Board Rep
Wally Cook	Board Member at Large
Dale Lombardo	Board Member at Large
Chris Stolicky	Board Member at Large
Charlie Goddard	Board Member Emeritus



Wally Cook, our newest board member, at the June KWA meeting

Update on the Tool Tote Kit for Students Project

By Rick Bird

For the past 12 months members of the Crafters SIG have been busy preparing parts for the Curtis Lumber tool tote project. NWA receives lumber from Curtis Lumber along with nails, screws and shrink wrap. Based on a plan from Curtis, Crafters members cut the 1x2, 1x6 and 1x8 pine boards into tool tote bottoms, sides, ends and handles. Holes are drilled into the bottoms and ends to accommodate nails and screws for assembly. Handle edges are routed to ease the sharp edges. WWARC members help us sort the nails and screws into bags for each tool tote kit then help to sort all the pieces into a package kit. Each package kit consists of a bottom, two sides, two ends, one handle, and one fastener bag. Each packaged kit is shrink wrapped for delivery back to Curtis Lumber who then use the kits for their in-school trades career awareness program for second through fifth graders in many area elementary schools.

To date NWA has prepared over 500 kits for the program. NWA and the WWARC receive donations arranged by Curtis for our efforts. Crafters will work with Curtis Lumber in the months ahead to build more kits as the need warrants. Over a dozen Crafters have volunteered their time to help with the project and deserve our thanks. Here are a few photos of the work we do:



Learay and Al Silvia drilling holes



Rick Bird and Al Silvia shrink wrapping the kit packages



Final batch of 75 kits ready for delivery to Curtis Lumber

OFFICERS

President - Available
(temporarily filled by VP)

Vice President - Irv Stephens

Recording Secretary - Susan McDermott

Treasurer - Paul Ruud
nwatreasurer2@gmail.com

Executive Secretary - Steve Schoenberg



NWA BOARD MEMBERS

Pete Chast

Mid-Hudson Board Rep

Wally Cook

Board Member at Large

Dale Lombardo

Board Member at Large

Chris Stolicky

Board Member at Large

Charlie Goddard

Board Member Emeritus



Mid-Hudson Chapter

Bill Sterling, President
wster1156@aol.com



CHAIR/CONTACT PERSONS

Auction and Hospitality

Lee Hilt

nwaauction1@gmail.com

Education

Chair pro tem - Dave Mobley

nwasearch1@gmail.com

Registrar - Jon Bennett

nwaeducation1@gmail.com

Members - Stan Blanchard,

Dick Flanders, Don Orr,

Juliana Shei, Bill Sterling,

Carl Stoner, Fred Tresselt

Fiske Fund

Chairperson - Woody Bowler

fiskefund@gmail.com

Treasurer - Juliana Shei

fftreasurer@yahoo.com

Members - Jon Bennett, Dick Flanders,

Bill Sterling

Historian

Wayne Distin

Library

Susan Hill

Membership

Alan Hayes

NWAMembers1@gmail.com

Newsletter Editor

Daniel Packer

nwanewsletter1@gmail.com

Publicity

John Olenik

jolenik@nycap.rr.com

Showcase Chair

Irv Stephens

nwa.showcase.chair2@gmail.com

KWA News

Wedgie-Sled

By Wally Cook

Bill Thiry demonstrated the building and use of a jig to produce accurate segments for a ring. The jig is a variant of the wedgie sled which is described in detail at Wedgies (segeasy.com). The sled features adjustable arms to accommodate a variety of angles when cutting on a tablesaw or bandsaw. Essentially, the number of segments in a ring will determine the angle (divide the number of segments into 360 degrees, and then divide that result by two for each angle cut).

For instance, a 30-degree segment will produce twelve wedges, with each miter cut set to 15 degrees. A 15-degree miter cut on each face of a wedge adds to one 30-degree segment. Twelve 30-degree segments sum to 360 degrees.

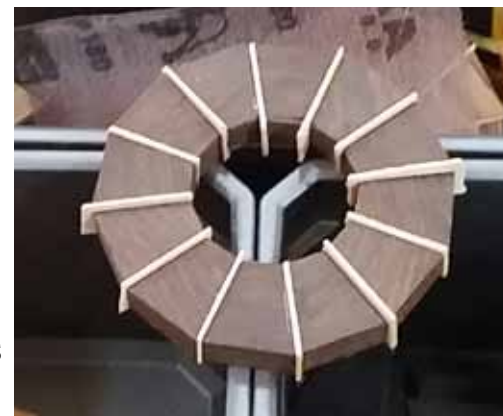
The wedgie sled is fit with a runner that is adapted to your bandsaw or tablesaw, and brings the edge right against the blade. An adjustable stop block on the offcut side of the blade provides the means of setting the length of the pie-wedge segment. Bill's design calls for the stop block to be part of an offcut 'ramp' that slides the cut segments away from the blade to avoid kick-back.

To use the sled, the material to be cut is lightly marked on the top and the side facing the inside of the nearest sled arm. This is done to keep the wood cutting in a consistent orientation. The edge of the wood is extended to the stop block and then cut using the sled. This produces the first miter. The second miter is prepared by moving the wood to the outside of the leading sled arm, contacting the wood to the stop block and cutting the second angle. The cut wedge will slide off the offcut ramp. This process is executed until enough wedges are cut.

Bill glues the wedges together with Titebond 2, pressing each pair together for 10 seconds on a flat piece of granite. He completes each half-ring separately, then compares the accuracy of the miters by mating the two halves. If there is a gap between the two half-rings, then it is an easy matter to micro adjust each half by sanding each to 180 degrees.



Bill shows the sled made for his Dremel tablesaw



Small ring produced on Dremel saw

WOODWORKERS NEWS

is published by the Northeastern Woodworkers Association for its members. The Association's aim is to provide a common meeting ground for lovers of woodworking who want to know more about wood and the techniques for forming it. The newsletter is published monthly. The newsletter is available online at www.woodworker.org



Your next issue of **Woodworkers News**

will be published in early September

Copy deadline: September 1st

Daniel Packer

Editor

nwanewsletter1@gmail.com

Elizabeth Keays Graphic Artist
Designer



WEBSITE

www.woodworker.org

Webmaster: Andy Moss

nwawebmasterhelp@gmail.com



**NORTHEASTERN
WOODWORKERS ASSOCIATION**

P.O. BOX 246

Rexford, New York 12148



When the ring is constructed, Bill flattens the face in the following manner:

a) a shop made jumbo jaws holder captures the ring securely in the tailstock and b) a 10" shop made sanding disc is screwed on

the headstock spindle. Now that both the ring and the sanding disc are squared up, he advances the tailstock to flatten the ring.

The wedgie sled can be upsized or down-sized, depending on the saw. Bill brought a mini-tablesaw to show his sled for making miniature segments, but also cuts larger segments with a full size saw and sled.

Each successive ring is called a 'generation', but Bill normally uses one segmented ring as a feature in a turning, rather than constructing an entire segmented piece.

Goblet Challenge: A variety of goblets were displayed for our June challenge. Thick and thin – and everything in between. Lots of variety! Next month's challenge will be to make lidded vessels.



A larger ring held fast in jumbo jaws for flattening the face



One of Bill's segmented, hollowed ornaments



Steve Sherman and Gary Goodstal check out one of the goblets

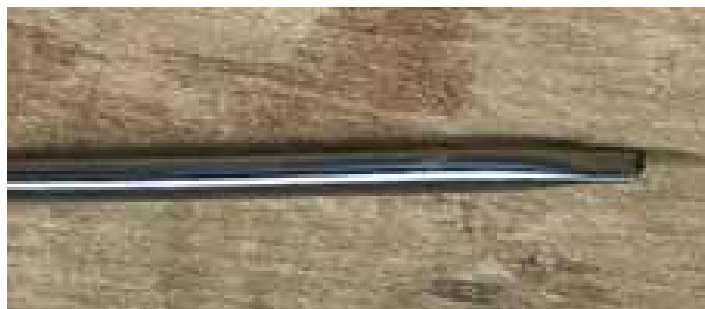
"MEMBER'S WOODWORKING TRICKS"



Submitted by Charlie James

I have several old radio antennas of different sizes in my shop. For me, it's by far the easiest and most straightforward way to see if a drawer or frame is square. I break the rounded tip off and squeeze it down, so it fits in the corner easily. I also use it for checking the depth of a bowl on the lathe or a drawer in a frame.

If the antenna becomes loose, I guess a clinch with a pair of channel locks would fix that. I've been using this for years and have never had a problem. Of course, you could check with a square, ruler or pinch sticks, etc. As a precaution I pinch my fingers on the sliding parts, so it doesn't move as I change.



Classifieds

For sale: Mortising machine – Shop Fox $\frac{3}{4}$ HP, 14 assorted bits $\frac{1}{4}$ to $\frac{3}{4}$. \$125

Bamboo dowels – those things the lawn care people put “Keep off 24 hours” signs on. These fit a 6 mm hole nicely. They are pointed and grubby on one end: useable about 15”. I have over 100 of them, take all free. John Michne, Clifton Park. (518) 371-6690.

EDITOR'S NOTE

This is the last newsletter until September.
We will accept submissions up to September 1st, 2023 for the
September newsletter. Important announcements
will be e mail blasts during the summer.

SPECIAL INTEREST GROUPS

SPECIAL INTEREST GROUPS (SIGs): Please note meetings will commence at our new location at 97 Railroad Avenue.

Adirondack Woodturners Association (AWA) - The AWA is active throughout the year. **General** Meetings and Bowl Turning are held the first Wednesday of the month (except in January and July when it is the second Wednesday), at the NWA Learning Center located at 97 Railroad Avenue, Colonie, NY from 5:30 PM to 8:45 PM. **Contact:** Maxwell Ferris at maxwellferris@yahoo.com

Spindle and Pen Turners - Meets Mondays 5:30 PM - 8:45 PM. Contact: Pam Bucci at 518-429-6440 or woolglass2@gmail.com
Wednesday "Learn and Turn" sessions occur on all other Wednesdays at the NWA Learning Center. These sessions run 5:30 PM to 8:45 PM. www.adirondackwoodturners.com **Contact:** Kevin Ramsey Cell 518-769-9665 or kmrammer@yahoo.com

Kaatskill Woodturners - Also an AAW Chapter. Meets on the second Saturday of the month at the Hurley Reformed Church, 11 Main St. Hurley, NY 12443. Contact Wally Cook at 845-338-2193 or wally.cook@gmail.com.

NWA Crafters - Meet Tuesdays and Saturdays 9:00 AM to noon. They provide public service woodworking for various charitable organizations, including the Double H Hole in the Woods camp for children and the GE Toy Modifications Group, and the Make A Wish Foundation. Sharing information, fellowship, and relating experiences are a major part of these sessions. **Contact:** Wayne Distin at 518-674-4171 or wdistin@nycap.rr.com for more information.

The NWA Wood Carvers SIG - Meet Thursdays 5:00-8:30 PM all year at the NWA Learning Center located at 97 Railroad Avenue, Colonie, NY. The goal is to promote the art of wood carving and to have a good time doing it. The only prerequisite is a desire to carve while making new friends. Wood, tools, and patterns are available. **Contact:** Diane Balch at 518-885-9899 or dbalch1@nycap.rr.com

Hand Tool SIG - Meets on the 1st and 3rd Tuesday of each month at 7:00-9:00 PM in the Herm Finkbeiner Education Center at 97 Railroad Avenue, Colonie, NY. **Contact:** Dave Parkis at 518-429-6581 for further details: dparkis@nycap.rr.com

Scrollers SIG - Meets every Monday and Wednesday 6 to 8:30 PM. **Contact:** Steve VanDerZee stevedz@msn.com

CHAPTERS

NWA Mid-Hudson - Presently The chapter meets on Zoom and at in-person meetings on the fourth Thursday of the month at 7:30 PM except the month of July. Meetings are at the Hudson River Maritime Museum located at 50 Rondout Landing, Kingston NY 12401. **Contact:** midhudsonwoodworkers.org Bill Sterling, President - 845-532-3754 wster1156@aol.com