

NWA Survey Response Charts

We received 203 Responses (3 Duplicates)
which is AMAZING !

In an effort to be transparent, NWA Leadership is providing the following
results to our membership.

Survey Coordinators / Analyzers:
Wally Carpenter, Rich Cerruto, Perry Bonanni

Background

- Because COVID-19 is significantly affecting NWA operations and our ability to communicate in person, NWA leadership wanted to find a way to know what the membership is thinking.
- A set of survey questions was created to determine member interests, focus and if there is a strong membership interest to actively support NWA.
 - The hope was the survey would reveal reasonably clear directions from the membership.
 - Additionally, we hoped for a show of engaging volunteer support.
- If this survey tool works, we can use it to provide more targeted survey questions (i.e., Do you have access to your own woodworking space?)
- A specific “*years of membership*” question was asked to learn if there were unique interest or needs from our newer members vs members at large.
- The following pages present a summary of what was learned so far and the next steps to be addressed.
- Finally, there are a set of charts summarizing the survey results, for those who want to dig into the data more deeply.

Initial Conclusions (more to learn) Pg1 of 2

- Members highly value: Access to skilled woodworkers, Classes, Camaraderie, Newsletters, Showcase / Totally Turning.
- Additional Desired Benefits from Comments: Video Education, and Mentor Supported Shop Time.
- Members clearly support: Furniture Making and Restoration, Turning, Box Making, and Carving. Significant interests in Canoe, Scrolling, Toy, and Instrument Making.
- Comments show interests in numerous education areas: Architectural, General Build Projects, Cabinet, Chairs, Design, Finishing, Jig Making and Tool Maintenance and Use. Several comments directed at CNC and Pyrography.
- Strong support to continue e-mail blasts, and the Newsletter with increased focus on our website (including You-Tube videos). There is limited interest in exploiting social media or texting.

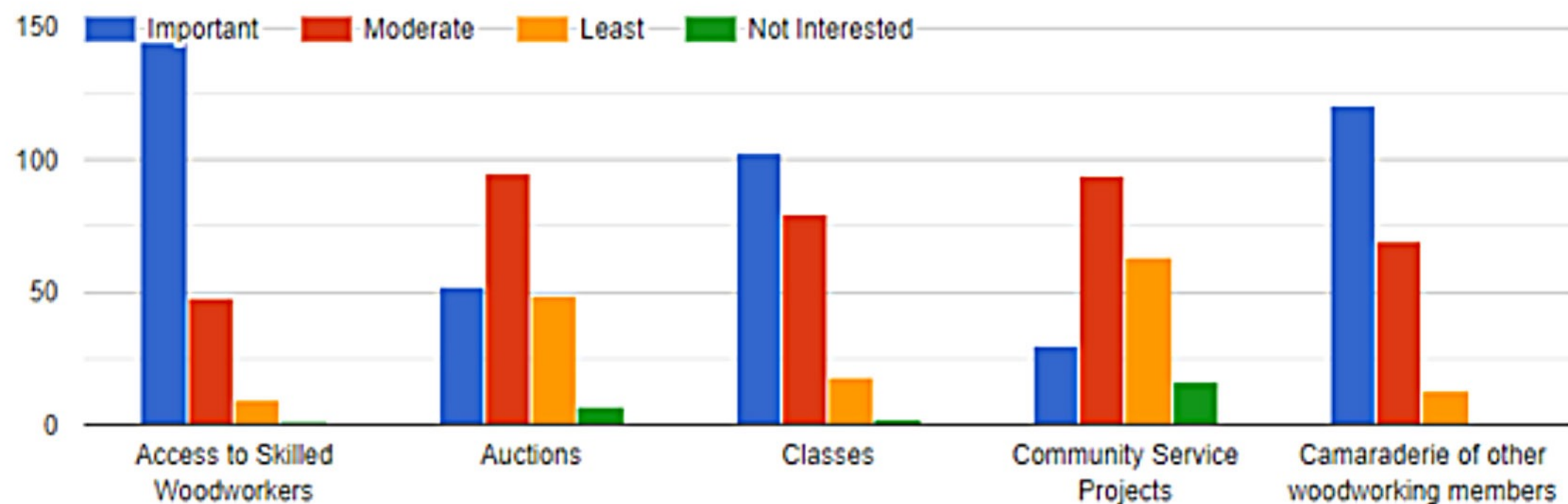
Initial Conclusions (more to learn) Pg2 of 2

- The Personal Goals Comments were heavily focused on Education, specifically on: general classes, tool maintenance and use, video classes, one-on-one mentoring with shop availability.
- 35.5% of the 200 responses were members with fewer than 5 years in NWA. While this is a VERY positive statement regarding a desire to join NWA, these members have specific needs which include connecting with skilled woodworkers, educational classes, and general engagement of other members.
- Members willingness to returning to either Classes, Meetings, or SIG Meetings is pretty evenly split between Spring, Summer, Fall 2021. There was a significant number who stated they do not attend one or all of these activities.
- We had an overwhelming show of volunteer support from our membership. About 75% (>130) of all respondents stated they would be willing to serve in as many as 6 volunteer areas. This potential volunteer pool is being distilled into groupings so we can contact you individually.

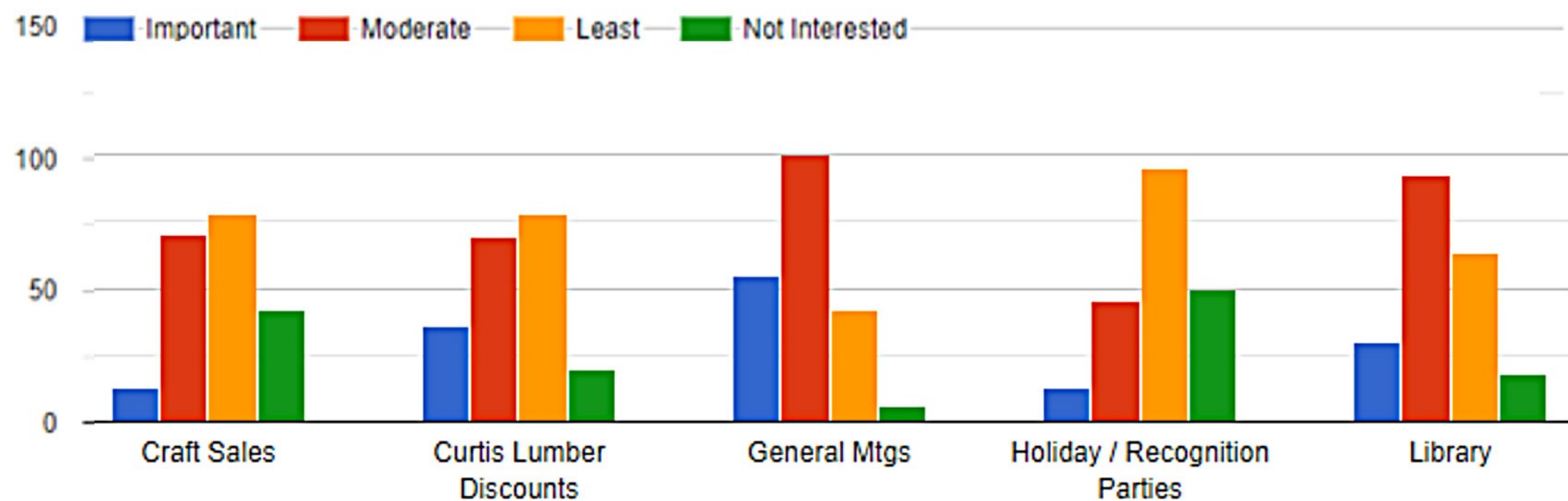
Next Steps

- NWA leadership has begun working on these areas with the focus on providing solutions even with social distancing impacts.
- NWA will:
 - Refocus member volunteer support toward arranging virtual and on site classes.
 - Work toward a mentor led shop program to assist members with specific needs.
 - Investigate new ways to engage newer members through mentoring, and veteran members with supporting build projects
- NWA is a volunteer led and supported organization. We survive and thrive because of our volunteers. NWA will be contacting all of those who have expressed an interest to help and look forward to engaging each of you soon.
- There are numerous other great ideas that we are studying thanks to each survey response. Please don't think they are being overlooked.
- Thank you again for the tremendous support !
- **If you have any specific and helpful comments, please contact us through:** nwa.showcase.chair@gmail.com

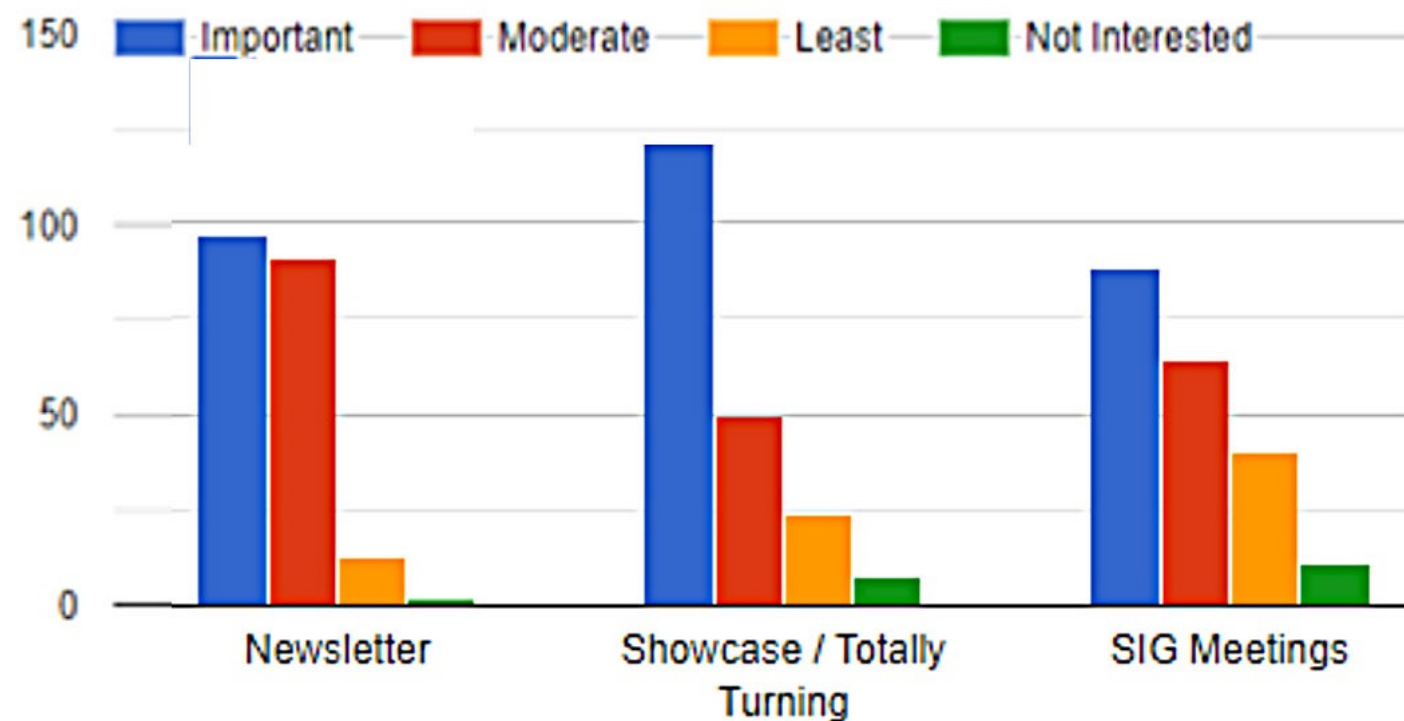
What part of member benefits do you value most ?



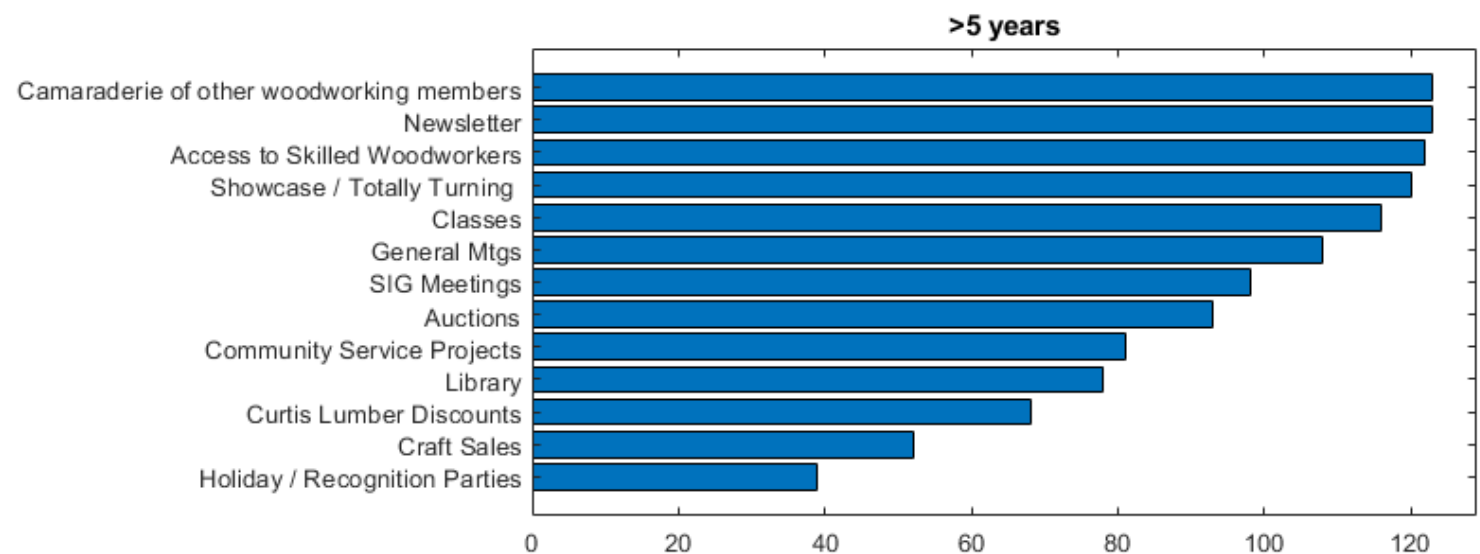
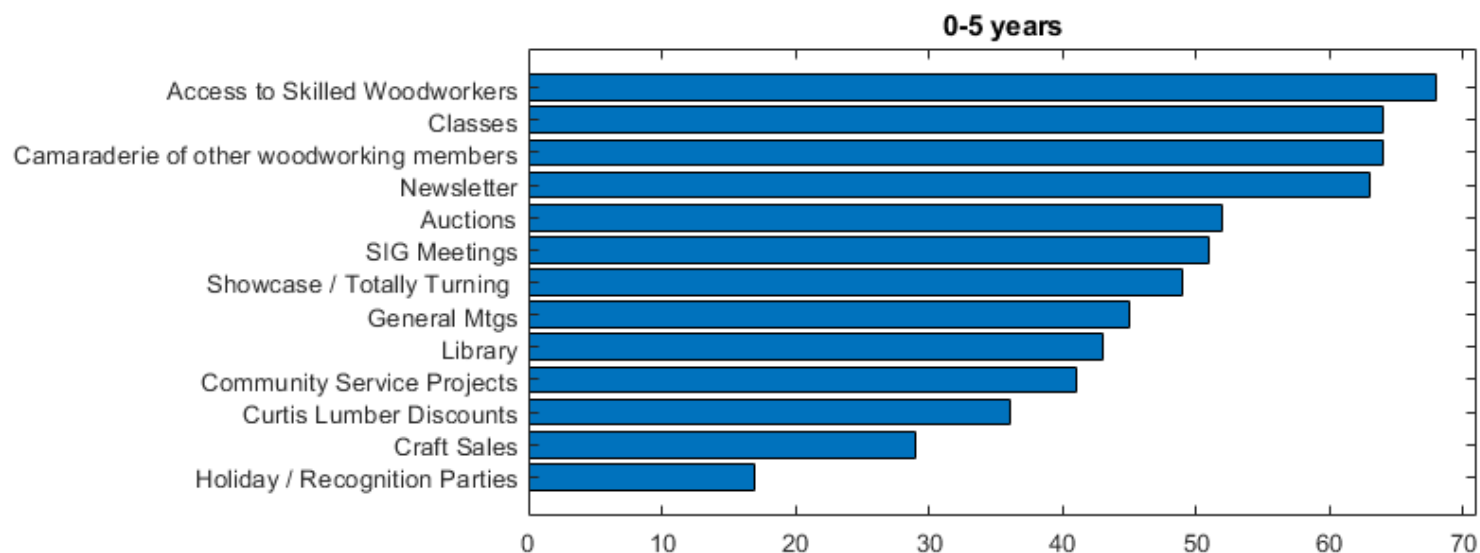
What part of member benefits do you value most ?



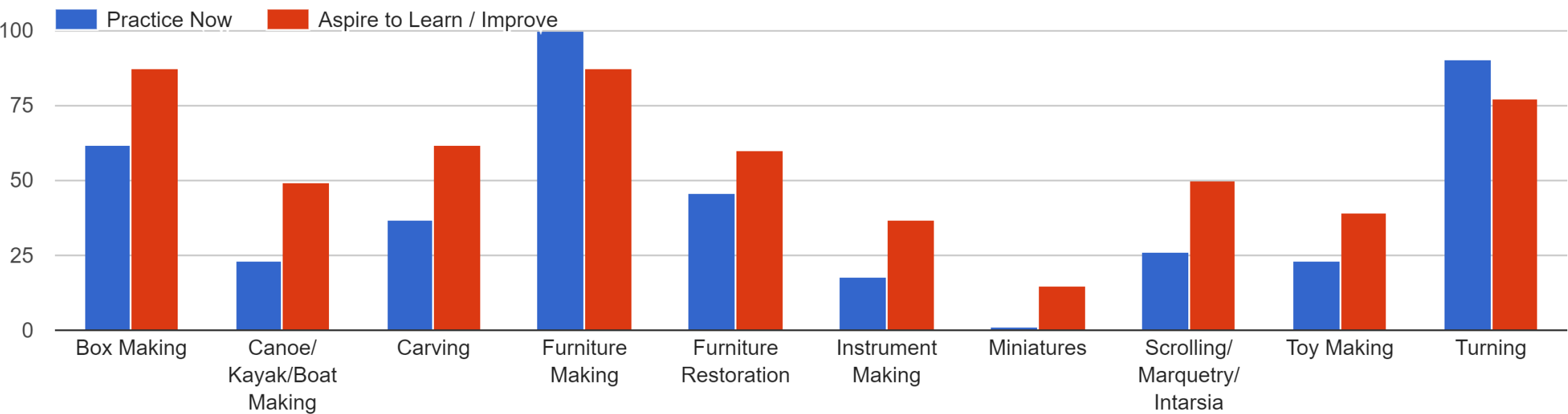
What part of member benefits do you value most ?



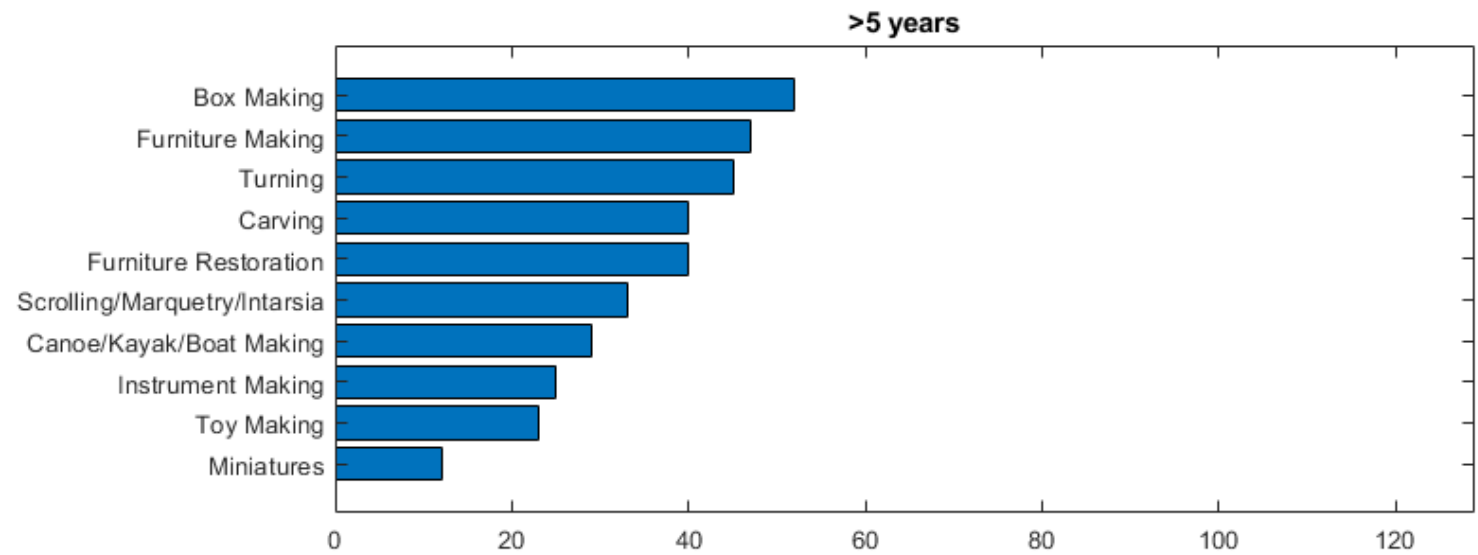
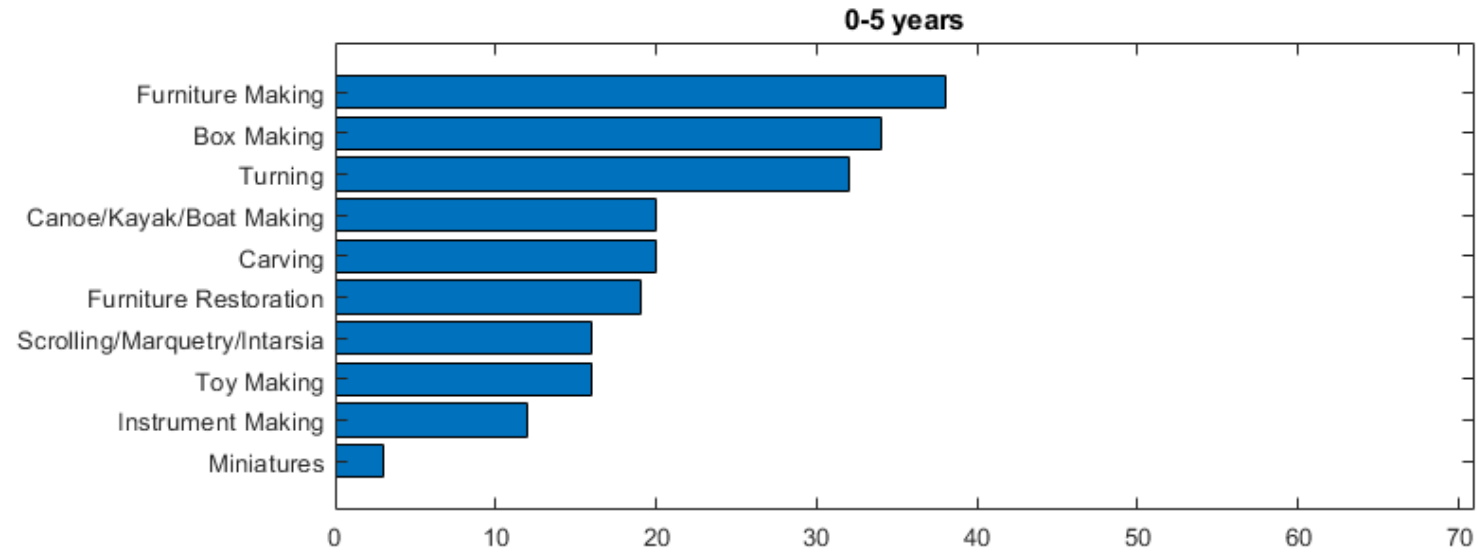
What member benefits do you value most? ["IMPORTANT" or "MODERATE"]



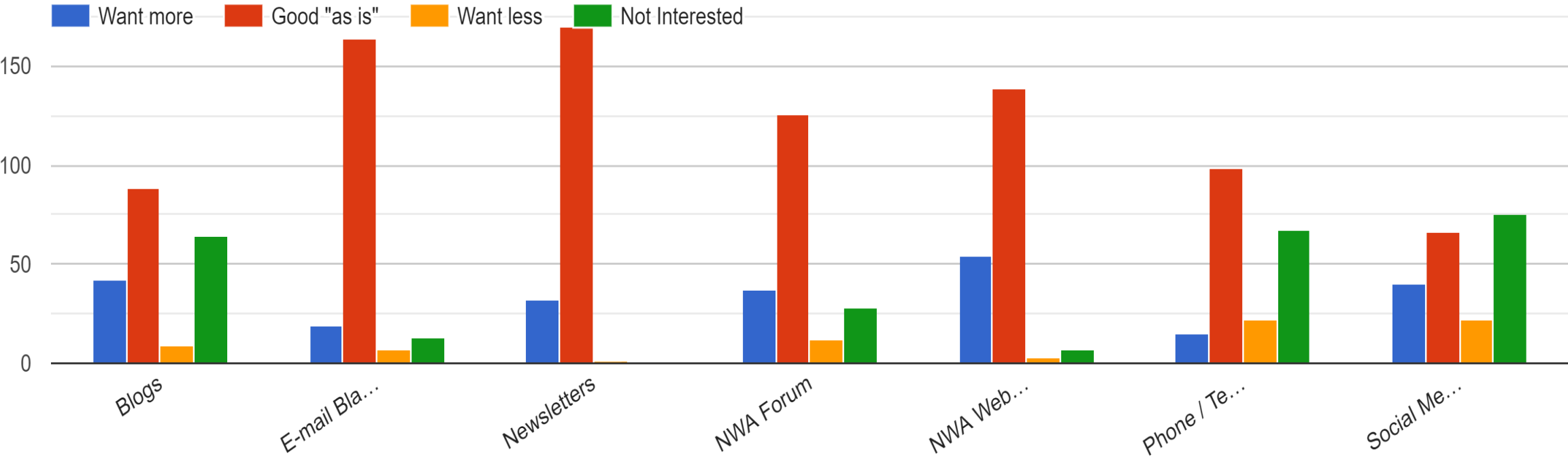
What are your primary woodworking interests? Check all that apply. (you can check both "practice now" AND "aspire to learn/improve" if you want to learn more)



What do you aspire to learn?

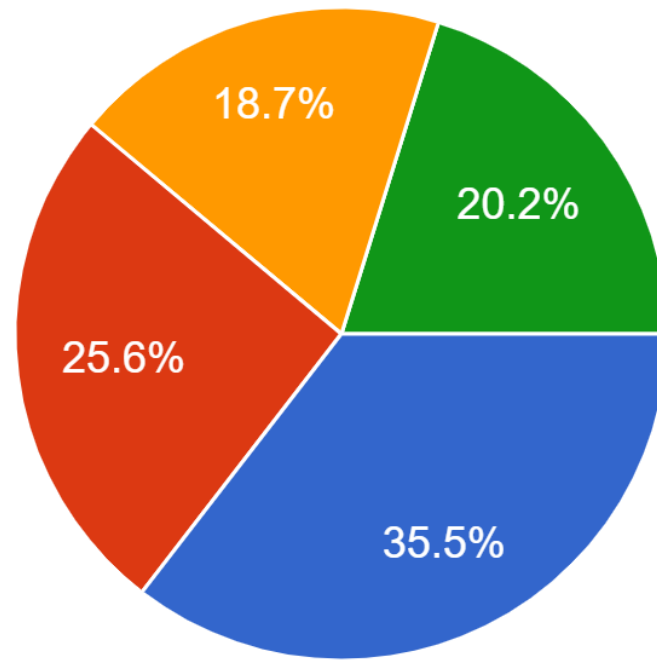


How would you rate various forms of communication you use to connect with NWA (i.e., SIGs, Members, Meetings) ?



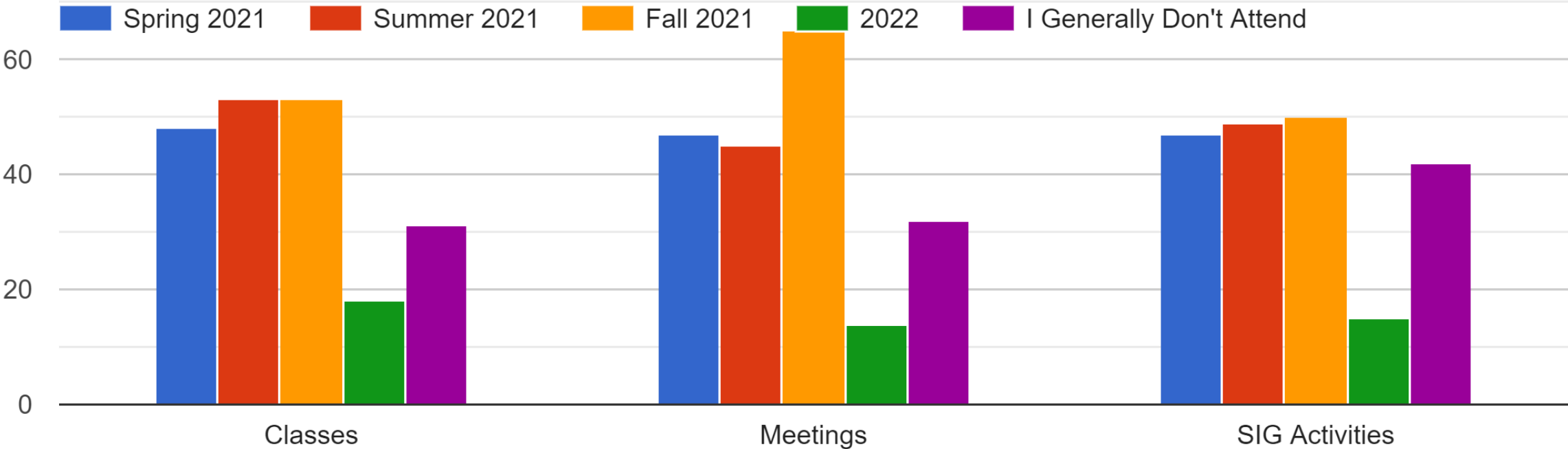
How long have you been a member of NWA?

203 responses



- 0-5 years
- 6-10 years
- 11-15 years
- more than 15 years

While the course of the COVID-19 pandemic and vaccination schedules are uncertain, when do you predict you'll be willing to join the following activities in person?



Would you be willing to help us in any of the areas listed above ?

203 responses

