

# WOODWORKERS NEWS



Northeastern  
Woodworkers  
Association

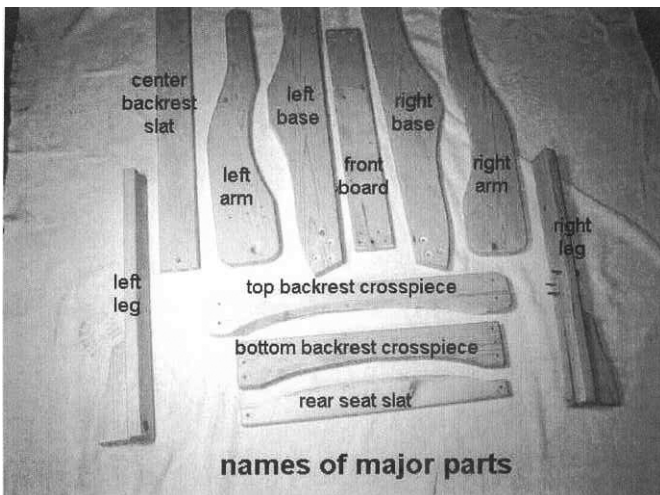
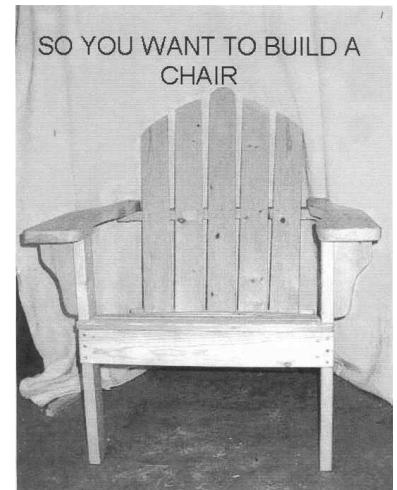
June 2008, Vol. 17, Number 6

## Jim's Hole in the Woods Gang

*By Dick Flanders*

Along with the routine full time projects of crafts kits for the Double H Camp, we are currently constructing several Adirondack Chairs for the lodges. These are based upon a design and plans from the person who built many for the camp several years ago. (Eileen Minder's father - Eileen is the former Arts & Crafts director at Double H, currently doing volunteer work as needed at the camp).

The material we are using is 3/4" Redwood planking, donated by Owen & Karen Arkison. We have cut out most of the pieces already from templates supplied by Eileen and her father. Now we have a lot of sanding and drilling of holes to do before initial assembly. The plan is to assemble each chair, identify the mating parts and disassemble, then package them up to keep the specific parts together for each chair. The chairs will then be assembled by the children and their counselors at the camp. Once they are assembled, the children will "decorate" them.



## Showcase NEEDS YOU!

*By Ken Evans*

Each year, beginning in October, the Showcase General Chairperson gathers together 25 co-chairpersons to meet once per month to plan and execute the Showcase which takes place in early spring (March 28 and 29, 2009).

This year two of our co-chairpersons, Guy Garrett and Don Partridge, are retiring after many years of service. NWA truly appreciates their long service and thanks them kindly while looking forward to seeing each of them at Showcase for many years in the future.

Both Guy's position of volunteer Coordinator and Don's position of Education co-Chair needs to be filled as soon as possible. Therefore, we are looking for volunteers to fill these two positions. Both Don and Guy have agreed to work with the new co chairpersons to make the transition seamless and painless.

If you are able to volunteer for one of these positions, please contact me at 518 753 7759 as soon as possible. We can discuss the respective positions and proceed from there.

Here is a chance for you to get involved with an important aspect of the club, work with a group of great people, and have a good time in the process.

Thank you.

## OFFICERS

**President** - Pete Howe 885-9331

phowe1@nycap.rr.com

**Vice President** - Warren Stoker 439-6089

wstoker@nycap.rr.com

**Secretary** - Kitty Scharl 765-3189

crowridge@empireone.net

**Treasurer** - Austin Spang 393-2859

spang@nycap.rr.com

**Past President** - Ken Evans 753-7759

kevans1@nycap.rr.com

**Historian** -

Position to be Filled

**Executive Secretary** - Charlie Goddard

370-0388 Cgodd@aol.com

## CHAIRPERSONS

### Mid-Hudson Chapter

Joe Kennedy, President 845-473-1598

jkenn23333@aol.com

### Sacandaga Chapter

Co-Presidents

Cliff Danke - 883-6011

Carl Siegle - 853-3866

csiegle@nycap.rr.com

### Education

Herm Finkbeiner 371-9145

hfinkbei@nycap.rr.com

### Adult Programs

Position To Be Filled

### Youth Programs

William Van Brunt 767-3060

wvanbrun@nycap.rr.com

### Fiske Fund

Joe Kennedy (845) 473-1598

JKenn23333@aol.com

### Hospitality

Al and Emily Stahl 587-2420

astahl@nycap.rr.com

### Library

Wilhelmina Evans 753-7759

wiltw0@nycap.rr.com

### Membership

Susan Howe 885-9331

### Programs

Ken Evans 753-7759

kevans1@nycap.rr.com

### Publications

Wally Carpenter 434-1776

c.j.carpenter@earthlink.net

### SHOWCASE

Ken Evans 753-7759

kevans1@nycap.rr.com

### Tool Crib

Gerry O'Brien 459-9266

go12211@yahoo.com

### Videographers

Dave Ellison 872-0980

ellisd@rpi.edu

Hans Kappel 861-8753

bluespruce@juno.com

Pat Pugsley 634-7144

ideas@mhonline.net

Bob Conahan 355-9032

conahanbob@hotmail.com

Kirk Hardenburg

725-1997

UNLESS OTHERWISE NOTED, PHONE  
NUMBERS ARE IN AREA CODE 518

# The Fiske Scholarship Fund

*By Joe Kennedy*

I am pleased to report that we have a good number of applications pending during the second quarter. Members have already taken, or will take classes in areas such as design, finishing, intarsia and turning. These applications will be processed in early July.

I would like to address two questions that have come up recently. First, funding for the Fiske Scholarship Fund comes primarily from the lumber auction in September as well as certain raffle proceeds. It does not come from your membership dues. Second, the Fund is meant to help defray the cost of a class you may wish to take, not to cover all your expenses. Also, the Fund does not lay out money in advance. Each member has to lay out his/her money first and seek partial reimbursement from the Fund. Finally, a member must submit the application before taking a class, not after.

If you plan to take a class this year, send me your application by the end of June, it can be processed in July. If you send it during the third quarter, it will be processed in October. 🐾

# The Rip Van Winkle Council of the Boy Scouts

*By John Grossbohl*

The Rip Van Winkle Council of the Boy Scouts seeks a donation of kitchen cabinets for use at Camp Tri-Mount in East Jewet, NY (near Hunter). Cabinets are needed for the Ranger's Cabin and the First Aid Station. Either used cabinets in good condition, or new cabinets, would be appreciated. Counter tops for the base cabinets are also needed. Contact John Grossbohl at grossboj@earthlink.net or 845-338-4955 if you may be able to help. A sketch with rough dimensions for both buildings is available in PDF format. A receipt is available for the tax deductible donation. Installation need not be part of the donation! 🐾

# Safety Message

*By Ray Gannon*

Summer weather is here and time again for the honey do's.

(I haven't forgotten the Spalted maple disease article just pushing it out a bit for more data). Few activities are as enjoyable as spending time cruising around our shops taking inventory of our stock, sorting out the yard wood from the exceptional pieces that we have obtained for that long forgotten project or when we are doing this we often forget to take precautions related to muscle strains, jammed fingers, or just too heavy for our current physical conditioning.

Step back and determine if you need a bit of help, take frequent breaks and in general think through your tasks at hand. This will undoubtedly save you or your helpers from personal injury.

Over the past few months we have been discussing the dangers of dust and wood toxicity. This time of year we often forget that there are many other ways to injure oneself. Think your day's activities through make a mental plan or a written plan and follow it. Spur of the moment actions are often the prime causes for back injuries or just stiffing up after using parts of your body that have been in hibernation for 6 mos.

Be safe this summer and watch your back. Common sense is my shop model what is yours? 🐾

I am a great believer in luck, and I find  
the harder I work the more I have of it.

Stephen Leacock

# NWA Member Profile - Earl Liberty

By Kitty Scharl

Earl Liberty surely has a great deal to show for his years on this planet. His very first woodworking project was a gun cabinet made in eighth grade shop class. He never looked back. Evidence of his continuous and creative involvement in woodworking as well as other crafts and skills were immediately apparent as I drove into the driveway of his immaculate Cohoes home where a copper roofed cupola made by Earl perches atop the garage and whimsical birdhouses extend hospitality even to the birds.

Earl retired as a master sergeant after 20 years in the US Air Force where he was an aircraft mechanic. During these years he and his wife Jean and their growing family traveled extensively—his four children being born in Rome, NY, Springfield MA, the West Point Army Hospital and Newfoundland. Earl recalls that one son started school in the Philippines and his kindergarten class was just one of thirty on the base. This was during the Vietnam War era, and military enrolment levels were obviously very high. By this time, Earl had already become an expert woodworker and was asked to design and craft a 10' X 6' conference table out of white mahogany for the battle staff. Following the Air Force came 13 years as a machinist at the Watervliet Arsenal, and lastly were his years as a draughtsman for the developer Robert Van Patten.

That Earl combined the skills acquired from each of his work experiences to become an extraordinarily efficient and productive woodworker is obvious from his shop capabilities, organization and customization. My first encounter with him (I being a novice woodworker and relatively new NWA member) was at an NWA class held in his shop. The class was using the router to fashion various styles of frame and panel doors. The myriad router bits were then, and I must confess continue to be now, quite mysterious to me. But I definitely appreciated the custom designed and fabricated innovations that were integral to the most skillful use of each power tool in the shop. The clever dust collection arrangements alone were to be marveled at, but also show stopping was his 71/2 foot long workbench with 20 dovetailed drawers and Birdseye maple panels. He had certainly come a long way from the hand-held circular saw that he mounted and fashioned into a table saw in his teenage years. Ingenuity, however, has been a constant!

As I chatted with Earl for this article I was treated to photo albums overflowing with past and ongoing commissioned projects of elaborately styled balustrades with gracefully sweeping, curved and carved handrails and turned balusters, fireplace mantles, and room after room of raised panel wainscoting in woods like oak, mahogany and black locust (the latter, of course, from Herm Finkbeiner's legendary neighborhood trees). There were also photos of upholstered furniture, gold



Earl and Jean



Earl Liberty Winning Piece

Continued on page 6

**WOODWORKERS NEWS** is published by the Northeastern Woodworkers Association for its members. The Association's aim is to provide a common meeting ground for lovers of woodworking who want to know more about wood and the techniques for forming it. The newsletter is published monthly. It is assembled in QuarkXPress 5.0 on an iMac G5, duplicated by Shipmates, and mailed to more than 1,000 addresses.



Your next issue of  
**Woodworkers News**  
will be published  
in early July Copy deadline:  
June 15  
Wally Carpenter, Editor  
(518) 434-1776  
c.j.carpenter@earthlink.net  
Elizabeth Keays Graphic Artist  
Designer



**WEBSITE(S)**  
[www.woodworker.org](http://www.woodworker.org)  
[www.nwawoodworkingshow.org](http://www.nwawoodworkingshow.org)  
**Blog Site:**  
<http://woodworkerorg.blogspotcom/>

Website Editor  
Position to be Filled

NWA maintains two websites,  
the first noted here  
operates continuously.  
We also offer selected  
links to other sites of interest  
to our membership.  
Webmaster - Justin Rohrer  
rohrej@woodworker.org

The second site operates from  
January 1 to May 30  
and carries specific  
information about SHOWCASE.



**NORTHEASTERN  
WOODWORKERS ASSOCIATION**  
P.O. BOX 246  
Rexford, New York 12148



# CHAPTER NEWS

## MidHudson Chapter

By Wally Cook

**Chapter Dinner:** Kudos to Bill Fiederlein and his committee for arranging a memorable member dinner! Bill Reynolds outdid himself preparing the raffle. We honored Matt Clarke for his tireless efforts in pushing the envelope with the Kaatskill Woodturners. Although Matt was in Spain visiting his daughter, we did manage to find an appropriate stand-in. Matt's effigy took an active part in the festivities, while Matt himself left a video recorded thank-you to the group. Herm Finkbeiner also gave a short talk on the founding and early days of the NWA: great background and advice to a growing organization.

**Loss of Bob Powell:** Our condolences are with Kathy Powell in the passing of her husband, Bob. Bob was an active NWA member and Vice-President of the Mid-Hudson Chapter through 2006. He will be remembered for his generous heart and passionate support of the Chapter.

**Safety, Everybody's Business:** Ray Gannon presented an overview of critical safety practices for the woodworking shop. We had a good interchange on toxicity of materials and importance of appropriate safety procedures in the shop. Ray made an excellent point about dust as a carrier for toxic oils in some exotic hardwoods. Fine particles can reach deep into the lungs and harden; some wood particles from hardwoods can lodge in the bowels and contribute to risk of colon cancer. Fumes from the glue in MDF also can present



*Bob Boisvert's mallard in progress*



*Jack Collumb's finished mallard*



*Joe Gannon presented safety awareness*



*Joe Kennedy congratulates Matt Clarke's avatar*



*Joe congratulates the real Matt*

a problem. The importance of wearing respiratory equipment cannot be more strongly emphasized.

**Fiske Fund Feedback:** Bob Boisvert, Jack Collumb, and Bill Reynolds attended a three day Intarsia Experience hosted by Judy Gale Roberts in Tennessee. The class focused on technique, particularly the importance of squaring the blade. Bob elaborated on tips that were provided on cutting sharp points on intarsia pieces -- Jack discussed the emphasis on shaping and carving elements for the entire design. The class project featured a mallard duck.



# CHAPTER NEWS

## *Sacandaga Chapter*

*By Gary Spencer*

The Sacandaga Chapter of the Northeastern Woodworkers Association last met on May 14th, our program featured members of our Chapter who won awards at the Showcase. Kirk Hardenburg, received a first place award for a corner cabinet and Mike Kratky received both a first place and a second place award for a Rustic Table and a Turned Platter. As previously mentioned Stanley Krolikowski won the peoples choice award

for his miniature scale model of a steam shovel. These projects were excellent and represent the energies, efforts and quality work of the members of the Sacandaga Chapter.

The next portion of the program presented a critique of each of the three team projects that were built and raffled off at the Showcase by that team. Each team showed pictures of their projects and discussed the positive aspects of their projects as well as any difficulties they met in constructing them.

This critique was extremely interesting and the teams universally exclaimed what a pleasure it was to work as a team. In fact two of the teams went on to make multiple copies of their showcase project, one for each member of the team. The discussion ended with a request for an interim team project to be

done in the fall before gearing up to make projects for the next showcase. From these comments its obvious that these collaborative projects provoked much enthusiasm for woodworking and that's what it's all about!

Teams were:

Team A – This team was composed of Cliff Danke, Ed Tanner, Neal Mayer and Jeff Vass. They cooperatively built a Jelly Cupboard at Ed. Tanners Shop.

Team B – This team was composed of Clyde Cheney, Kirk Hardenburg, Tom Rulliffson, and Carl Siegle. They built several Step-Back Cupboards at Tom Rulliffson's shop.

Team C – This team was composed of Fritz Henze, Rod Neilson, Ralph Simonsen, and Paul Vingerhoet. This team built a Deluxe Shop Storage/Bench System at both Fritz Henze's and Paul Vingerhoet's Shops.

Another segment of our program involved a Show and Tell of woodworking tools by our members. The categories they could bring tools to show were: Oldest tools they had, the most favorite in the shop, the best tool they owned. There was much fun and a lot of interest. We will do this again!

Overall a grand evening!

Our next and final meeting before our summer break will be on June 11th. It will be a visit with Barney Bellinger at his workshop and studio. As you probably know Barney makes one of a kind Rustic and Adirondack Furniture. He is a wonderful craftsman, and a superb artist who uses fantastic woods and burls to create marvelous furniture.

We will be meeting at his Studio/house/woodshop at 7:00 P.M. on June 11th. Barney's address is: 171 Paradise Point Rd., Mayfield, NY - off of RT. 30 just past Poor Jim's Restaurant. This will be a one of a kind meeting and should not be missed. All NWA members are encouraged to attend.

Our regular monthly meetings are the second Wednesday of each month and begin at 7:00 P.M. at Mayfield High School woodshop. Our next regular meeting will be Sept. 10, 2008. Come on out!

Remember we have door prizes and light refreshments are served.

For Directions or information contact:  
Cliff Danke – 883-6011  
Carl Siegel – 853-3866  
Gary Spencer -863-6433

## C L A S S I F I E D S

### For Sale

DeWalt DW682K Heavy Duty Biscuit Jointer, in the case \$135. Mike Kratky at theinspector1@roadrunner.com

Awareness of both your limitations and your potential enhances humility.

Sheila M. Bethel

The secret of staying young is to live honestly, eat slowly, and lie about your age.

Lucille Ball

# Kaatskill Woodturners Monthly News

By Wally Cook

Hold On: Why not clamp turning stock on both ends? That was the thesis of John Franklin's talk at the May Kaatskill Woodturners meeting. John demonstrated the advantages of using a spigot chuck on the tailstock, as well as on the headstock.

Holding both ends of the turning blank avoids compression normally experienced with turning between centers. Of course, simply holding the piece with one chuck mounted on the headstock will avoid compressive force. However, there are occasions where the turning solution may benefit from two clamping positions.

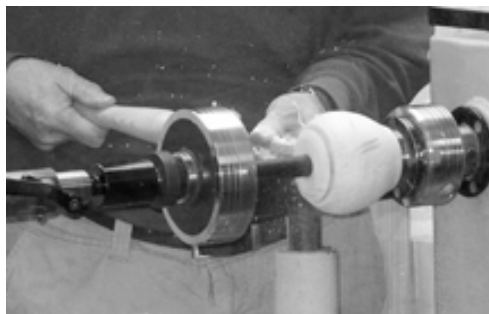
One such occasion is the turning of fine finials. John found that turning icicle ornaments became easier if both ends were secured by hold fast chucks: the delicate taper could be performed with lower risk. This discovery led to an idea of using a dowel to hold a lidded vessel for turning the outside shape and then making the dowel an integral part of the lid finial.

To accomplish this, John first sets up a smaller spigot chuck on the tailstock using an adapter. The vessel blank is drilled to match the dowel, but the hole is very slightly undercut an inch or less into the vessel -- beyond the bottom of the intended lid. The dowel is glued into the vessel blank just to the depth of the undercut. The undercut provides glue-less gap between the dowel and the vessel, allowing an easy parting in the next step.

The dowel provides the mounting surface in the headstock, while the bottom of the vessel blank is chucked in the tailstock. The vessel is shaped and the lid is parted from the main form -- the parting is made cleaner by the small gap below the lid, where the lack of glue will let the lid part without cutting through the dowel.

The lid is cut to finish size and the vessel is separately chucked in the headstock. A dovetail is cut in the vessel to receive the lid and the hollowing proceeds as usual. The dowel is then remounted in the headstock and the lid is mated to the vessel (now chucked once again in the tailstock). The lid and dowel are now finished with the entire

unit spinning together. [Tip: start the lathe at a slow speed when finishing the finial to avoid torque, increase speed gradually].



*The form is chucked at either end: here the lid is being parted*



*The bottom of the lid may have its own drop finial*



*Example of a finished finial*

## NWA Member Profile

*Continued from page 3*

leafing, a lovely arched gate and pergola made for his son's Georgia home, a gorgeous arched doorway and a number of stained glass windows and lecterns--with many of these extensive projects undertaken voluntarily for the Holy Trinity Church in Cohoes. Earl has also been known to assist elderly neighbors with landscaping and yard work. The living room featured his most recently completed piece of furniture--a lovely cherry and glass cabinet for a new 55" flat-screen TV.

The Liberty home into which one is welcomed graciously and warmly is very much a joint endeavor between Earl and his wife, Jean, who describes herself as a "hooker" (of rugs as I later discovered) also has many diverse talents, skills and interests. She spends time in activities such as quilting, stenciling, rug making and coaxing the orchids in the sunroom into delicate and colorful blooms. Wherever one's eye rests there is a stained glass window or dovetailed bookcase or rug or custom cabinet or quilt or carving or stenciled wall or woodwork detail made by either Jean or Earl. I left their home that day shaking my head in admiration at the lifetime of prodigious energy, self discipline, creativity and devotion to family and community that I had witnessed. 🌹

You can observe a lot by watching.

Yogi Berra

The difference between gossip and news depends on whether you hear it or tell it.

Anon

**Check out our websites:**

[www.woodworker.org](http://www.woodworker.org)

**Blog Site:** <http://woodworkerorg.blogspotcom/>



# Adirondack Woodturners Association Monthly News

By Celia Carpenter

## Nominations needed for this November!

We have openings for 3 board members and a secretary. Nominate people that you want to represent the views of the members. We are also looking for a person to manage and present the raffle each meeting. This position will have a budget and guidelines to help you. Please see Ed Van Wormer for your suggestions or if you are interested for yourself.

## Mays' Demonstration:

We had a very enjoyable and informative evening with Peter Thompson. Peter has been turning for a while but this was the first time that he has presented. He did a terrific job helping both new and seasoned turners in the ever ending quest to turn a perfect bowl.

Peter went through his process of selecting material and readying the wood. He prefers to use wood that is 6 months to 1 year dry. His process is to finish the bowl in one session and claims that only 1 out of 100 bowls cracks. Good odds.

Peter likes a thicker edge to his bowl and it is not important to him to have the thinnest of walls. He continues to enlarge his skill base and has recently taken a deep hollowing class with Paul Petrie. He learned a lot and is currently experimenting with his new skills. Perhaps he will come back in a year or so and show us his tricks.

As a part of presentation we are starting to display pieces at Curios Lumber after the demonstration. Recent pieces have had interest and requests for purchases.

## Curious Wood Displays:

Anyone interested in displaying your turnings in the showcase cabinet at Curious Woods please see or email Celia Carpenter. C.J.Carpenter@earthlink.net. Arrangements can be made for delivery. Only limitations is the piece or pieces will need to fit in a case 2'x2'x3'. A display card will need to be shown with the work. Presenters at AWA meeting will have their work on display for a time after our meeting.

## June Demonstration:

Celia Carpenter will be demonstrating spindle turning. She was taught by our very own Ken Evans. Celia made many of the spindles for the crib that was built by the Jim Kennedy's Hole in the Woods group. One of the cribs was donated at Showcase and the other auctioned off at the Holiday Party this year. Celia and Wally were the high bidder for their first grandchild Mabel.

## Raffle Items:

If anyone has anything to contribute to the raffle inventory it would be appreciated. This month there was a lot of interest in George Gurtler's partially finished segmented vase. The lucky winner was Paul Petrie. We all grumbled a bit.

## New Members:

We were pleased to meet and greet three new members at this month's meeting. It is important for all of us to assume the responsibility of fellowshiping our new members.

## Stillwater on Wednesdays:

We continue to have a great group of people at Stillwater on Wednesdays for open turning. Some of our newest members are getting to turn with help and teaching from experienced woodturners.

The time is every Wednesday EXCEPT when we have our monthly meeting at Curtis Lumber. It starts at 6pm and ends including clean up time at 9pm. 🐾

## Inventory at Double H Ranch

By Herm Finkbeiner

Each year NWA members join together to make kits for the youngsters at the Double H Hole in the Woods Ranch to put together, modify, cannibalize, paint, decorate or otherwise used in their camping experience. All the kids have a serious, often life threatening disease, and the Double H is their opportunity to experience a "week in the woods".

Many NWA members have helped to provide the kits. In fact, NWA has been helping since 1992, the very first year of the camp. The scrollers, under the guidance of Donna Phillips make literally hundreds of



Charlie Goddard, Eileen Minder and Dick Flanders count the stock at Double H

animal cut outs for the kids to use. Each cabin is named after an Adirondack animal and so every bear, raccoon, deer etc. wants a cut out to go with his/her cabin. About 1,000 come to the camp each summer so the size of the task is clear. Bill McCormack leads a group to make wooden "fish" which are used to keep score at the lake. Eileen Minder, a former directory of the crafts program, pointed out that as many as 90 fish have been caught by a camper in a week (Eileen thinks it may have been the same 9 fish caught 10 times each). A bandsaw crew has, year in and year out, made dozens and dozens of stars, hearts, fish of all kinds and larger animal cut outs.

Last and surely not least, Jim's Hole in the Woods Gang has made kits for airplanes, race cars, boats, memory boxes, critter cages, CD racks, etc. etc.

On Thursday, May 15 Charlie Goddard, Dick Flanders, Eileen Minder and I went to the camp to do an inventory of the craft projects to determine what was in short supply. Conclusion? Lots of things are needed before the camp opens in mid-June.

If you can help contact:

Dick – rflander@nycap.rr.com – 393-5215

or me – hfinkbei@nycap.rr.com – 371-9145.

There is a job for you!





Northeastern Woodworkers Association  
P.O. Box 246  
Rexford, New York 12148-0246

## GENERAL MEETINGS AND SPECIAL EVENTS

For meeting cancellation  
information,  
call Ken Evans 753-7759  
or Charlie Goddard 370-0388

## SPECIAL INTEREST GROUPS

### SPECIAL INTEREST GROUPS (SIGs)

**Adirondack Woodturners Association** - The AWA is active throughout the year. Meetings are every first Wednesday of the month (except in January and July when it is the second Wednesday), and are held at the Curtis Lumber conference room on Route 67, Ballston Spa. Beginners' sessions begin at 6 pm; the main program at 6:30 pm. Wednesday "Learn and Turn" sessions in Stillwater are also scheduled from 6 pm - 9 pm except on AWA member meeting nights. [www.adirondackwoodturners.org](http://www.adirondackwoodturners.org) Contact Ken Evans, 753-7759 or [Kevans1@nycap.rr.com](mailto:Kevans1@nycap.rr.com)

**Carver's Guild** - meets every Friday at the Clifton Park Senior Center from 9:00 am to 1:00 pm. Sessions are intended for every NWA member who is interested in carving, from beginners to those wanting to learn a new technique. No reservations are necessary, just show up! Contact Bill McCormack, 233-7260.

**Scroller's Guild** - Meets on the third Wednesday of the month at The School at Northeast, 1821 Hamburg St., Schenectady. A beginner's session starts at 6:30 PM followed by a general meeting at 7:00 PM. Contact: Donna Phillips, (518) 372-3337 or [dlphill@nycap.rr.com](mailto:dlphill@nycap.rr.com).

**Kaatskill Woodturners** - Meets the second Wednesday of each month at 7 p.m. at the Opdahl property in Hurley. Contact George Norton, (845) 331-1705.

**Jim's "Hole in the Woods Gang"**

Meets every Saturday, from 9:00 am until noon at Jim Kennedy's shop at 86 Guideboard Rd., in Halfmoon. (just 1 mile east of the Halfmoon Diner on Rt. 9). Our general purpose is public service work for various charitable organizations, including the Double H Hole in the Woods camp for children. We strive to foster a learning environment for our members through the projects we work on and the informal training/learning sessions given by and for our members. Sharing fellowship and relating experiences are a major part of our sessions, as we do accomplish many tasks during our times together as well. Contact Dick Flanders, (518) 393-5215 ([rflander@nycap.rr.com](mailto:rflander@nycap.rr.com)) or Darrell Welch, (518) 477-8431 ([ydwelch@taconic.net](mailto:ydwelch@taconic.net)) for more information.

### CHAPTERS

**NWA Mid-Hudson** -The chapter meets at 7:30 p.m. on the third Thursday, except July and August, at the Hurley Reformed Church. The Church is just off the the Hurley exit from Rte. 209. Right at the exit, right at the stop sign and left into the Church parking area. Contact Joe Kennedy, (845) 473-1598

**NWA Sacandaga** - The chapter meets at 7 p.m. on the second Wednesday of each month at Mayfield High School in the woodworking shop. Park by the section of the building that protrudes further into the parking lot and enter the nearest of the (5) doors. Contact Gary Spencer, 863-6433.