

WOODWORKERS NEWS



Northeastern
Woodworkers
Association

December 2009, Vol. 18, Number 12

FAMILY NIGHT AUCTION

Thursday, December 10, 2009, 7:00 PM

Shendehowa Senior Center

Vischer Ferry Road, Clifton Park

By Roger Holmes

December brings us our annual Family Night. It will be the 10th of December. Plan on bringing samples of your talents for the Instant Gallery. We are interested in seeing samples of your woodworking, crafts and artistic talents.

Bart Chabot has agreed to MC an auction again this year. We are looking for a Green Auction. What does that mean to you? For the turners it could be green wood. Those with an artistic side might think of the color. Others might even think of keeping it environmentally friendly with recycled items. The only guidance is to keep it GREEN, let's see where it goes.



In keeping with the green theme, I have been fortunate in finding three fine and lightly used examples of Windsor Chairs for the auction. They needed a little cleaning but they are ready for a new home. They are of separate styles; a Sack-back, a Fan-back, and a Comb-back writing arm chair. I am not an expert on these chairs. I was just lucky to find three chairs that needed new homes and the price was right. I didn't know there were so many styles of Windsor chairs. I had to do some research to identify these precious finds. The chair with the writing arm is missing the under-seat drawer for writing supplies. I am sure some one among us has the talents to recreate a fitting box. Come to Family Night and see if you are lucky enough to take one of these jewels home.

It might be nice to see some of the chairs that have been done by club members standing along side these treasures.

Remember to bring the GOODIES!

The topic for February's meeting has changed. Ed Contento, one of our members, will do a presentation on Central American native masks. He has a large collection of masks and will share a sampling of them with us. 🐸

OFFICERS

President - Owen Arkison
518 459-5348
owen.arkison@earthlink.net

Vice President - Roger Holmes
roger.holmes@dewalt.com

Secretary - Kitty Scharl 765-3189
crowridge@nycap.rr.com

Treasurer - Austin Spang 393-2859
spang@nycap.rr.com

Past President - Warren Stoker 439-6089
wstoker@nycap.rr.com

Historian - Wayne Diston 674-4171
wdistin@nycap.rr.com

Executive Secretary - Charlie Goddard
370-0388 Cgodd@aol.com

CHAIRPERSONS

Mid-Hudson Chapter
Pete Chast, President
pchast@francomm.com

Sacandaga Chapter
Co-Chairpersons
Clyde Cheney - 661-5138
Ray Laubenstein - 863-6071
RLAUB@Roadrunner.com

Education
Herm Finkbeiner - 371-9145
hfinkbei@nycap.rr.com

Adult Programs
Position To Be Filled

Youth Programs
Ray Gannon - 664-2229
raymond.gannon@wildblue.net

Fiske Fund
Tom Osborne
TTomosborne@aol.com

Hospitality
Lew Hill

Library
Darrel Welch - 477-8431
ydwelch@fairpoint.net

Membership
Susan Howe - 885-9331

Programs
Ken Evans - 753-7759
kevans1@nycap.rr.com

Publications
Wally Carpenter - 434-1776
c.j.carpenter@earthlink.net

SHOWCASE
Ken Evans - 753-7759
kevans1@nycap.rr.com

Videographers
Dave Ellison - 872-0980
ellisd@rpi.edu

Hans Kappel - 861-8753
bluespruce@juno.com

Pat Pugsley - 634-7144
ideas@mhonline.net

Bob Conahan - 355-9032
conahanbob@hotmail.com

Kirk Hardenburg
725-1997

UNLESS OTHERWISE NOTED, PHONE
NUMBERS ARE IN AREA CODE 518

Lumber For Sale

The annual auction was successful again in making money for the Fiske Fund. We took in over \$11,000. However we had a large quantity of lumber left over. We sold red oak and ambrosia silver maple for an average of \$1/ BF but we didn't come close to selling all of it. We would like to sell some more. If you are interested in either red oak or ambrosia silver maple at the average price of \$1/ BF please contact Dick Flanders, Warren Stoker or Charlie Goddard. You will not be able to sort through the pile to pick out the best boards, however, poorer boards will be discounted so that you pay for only the useable portions.

Parking CZAR Sought

By Ken Evans

The Showcase committee is looking for someone to volunteer to help develop a "parking plan" for attendees to Showcase 2010. Parking has always been a serious issue during Showcase and this year, with the construction in and around the City Center, we need to be pro-active with a solution.

If you can spare some time to be part of the Showcase Planning Committee looking into a solution to the parking situation, and would like to do a good deed for NWA and Showcase attendees, please contact Ken Evans at 518 753 7759.

Toy Factory at Showcase

By Pete Chast

This year's toy factory at the 2010 Showcase will feature a Coffee Can Bird House. The Mid-Hudson Community Service Group has started to manufacture the kits. In order to complete the estimated 300 we need on hand for the 15 hours of Showcase We'd like a little help.

We have collected about 100 of the 300 coffee cans that will be needed. If you have access to coffee cans, either metal or plastic, in the normal 11-15

oz. size please bring them to a meeting where they can be added to our count.

We have a variety of cars and car kits for the smallest children and are working on some plane kits as well. We have not yet decided on the gift for our hourly drawing giveaway. Suggestions are welcome for this.

Any Donations will be gratefully appreciated. Thank You. 🙏



"Imagination is more important than knowledge.
Knowledge is limited, imagination encircles the world."

Albert Einstein

Member Profile: Ed Lenz

By Larry Zinn

Ed Lenz, standing here in his garage shop, has been a member of NWA since shortly after the first gathering of area folks who enjoy making saw dust and shavings. He is a versatile woodworker who builds and restores furniture, carves intricate objects, scroll saws, makes wooden toys and all of the other flatboard stuff. Other skills show up in his restoration of a 1950 Chevy pickup truck and a Model A Ford. He even does some commission work which generally incorporates his wonderful carving and creative designs. One of his favorite projects was a small Noah's ark, complete with dozens of tiny scroll sawn animals and people. With assistance from several of his five grandchildren, he made a lot of boat kits that were sent to Double H Hole in the Woods for other children to assemble and enjoy.



Ed and Nancy have made a beautiful life for themselves and their three children in Saratoga Springs for decades. They knew each other over many years in their youth which ultimately led to a decision to share a lifetime of it. It has been 54 years and counting. He bought the prominent Broadway pharmacy, Menges and Curtis in 1961, soon after graduating from the Albany College of Pharmacy, and operated it for many years. Early on, that included a unique seven stool soda fountain with homemade ice cream and "real" chocolate malt shakes, sodas and the works. Menges and Curtis has since been passed on to their son, former mayor Mike, but Ed keeps his license updated by annual trips back to the college classroom. He is on call at the pharmacy if needed!

The Lenzes have loved to travel both domestically and abroad, and for some years they flew around in his four seat Cessna. That exciting hobby was grounded as his eye sight became a problem.

Ed did a stint in the army during the Berlin crisis; he remains active in Rotary—former President and currently President of Saratoga Rotary Education Foundation, and he is also secretary of the Board of Governors of the Saratoga City Center where our annual Showcase is held. He has served the Center since its inception.

"Speaking" of Showcase, Ed served as chairman of the toy factory for two years—the first year on very short notice; he volunteers almost every year, and he has taught carving seminars.

One of Ed's fond memories of his NWA years was when a small group of members formed an informal group called the Sylvan Comarata—maybe the precursor of some of our present Special Interest Groups. This group of seven or eight met for dinner periodically and one member would be responsible for sharing some particular woodworking knowledge, technique or a special piece.

Look for Ed's work at Showcase. If we are lucky, we will see one of his beautiful carvings or a toy for some child to enjoy. 🐿

WOODWORKERS NEWS is published by the Northeastern Woodworkers Association for its members. The Association's aim is to provide a common meeting ground for lovers of woodworking who want to know more about wood and the techniques for forming it. The newsletter is published monthly. It is assembled in QuarkXPress 5.0 on an iMac G5, duplicated by Shipmates, and mailed to more than 1,000 addresses.



Your next issue of
Woodworkers News
will be published
in early January
Copy deadline: December 15
Wally Carpenter, Editor
(518) 434-1776
c.j.carpenter@earthlink.net
Elizabeth Keays Graphic Artist
Designer



WEBSITE(S)
www.woodworker.org
www.nwawoodworkingshow.org



NWA maintains two websites,
the first noted here
operates continuously.
We also offer selected
links to other sites of interest
to our membership.
Webmaster - Kurt Hertzog
kurt@kurthertzog.com

The second site operates from
January 1 to May 30
and carries specific
information about SHOWCASE.



**NORTHEASTERN
WOODWORKERS ASSOCIATION**
P.O. BOX 246
Rexford, New York 12148

Logs to Lumber

By John Hodgson

This is the first in a series of articles to highlight the Logs to Lumber program. Logs from various sources are collected and turned into lumber for sale at the auction in September. Revenue from the sales goes into the Fiske Fund, which provides grants for education in woodworking.

Anyone who has seen the lumber mill demonstration each year at Showcase can understand the fascination associated with converting logs into lumber. It appeals on so many levels and ways. Since you can never tell for certain the quality of the wood from a log's appearance, there is always a sense of anticipation and hope when the blade first cuts into it. And then there's the excitement of seeing high quality boards appear. Clear, wide boards, maybe with some figuring or rays, are a thrill to see especially from an ugly duckling of a log.

I think the same motivation is behind searching for a hidden treasure at garage sales and the pleasure of finding it. There's nothing quite like unexpectedly finding something valuable, especially in a place that other persons may have overlooked. I even got pleasure from seeing the whole "green" thing put into action. Saving valuable trees that would otherwise go to the landfill and seeing them converted into usable lumber was gratifying.

Charlie Goddard is the undisputed, day-to-day guru of the Log to Learning program. Laid back, soft-spoken and knowledgeable, he was the driving force behind collecting and sawing about 40 logs this year. From him and several others, I learned some of the intricacies of

working with wood at the elemental level. We picked up logs from various sites using a 7500 lb trailer which sounds big but I came to find was only adequate. Fresh cut logs are really heavy – 600 to 800 lbs is not unusual. That, in turn, makes safety a paramount concern. You don't want one of those bruisers falling or even rolling onto you. Moving them is a chore and even with the right equipment can take three people. And then there's

the problem of moving them in the right direction - turning and lining them up with the mill. Like many things in woodworking, I learned that there is either a trick or at least a time-honored method for doing it with the least effort.

Where and how we collected the logs, cut them and stacked them is the subject of future articles. We probably laid in between 5000 to 6000 board feet of lumber. The amount drying in the barn at the Shaker site gives shows the success and efforts of the volunteers involved. There are still more than 10 logs of black cherry waiting for spring and the cutting to resume. Over the winter, we will be searching for logs and opportunities to obtain them so we can further stock the barn for the sale next year.

If you know of any hardwood logs available for donation or sale to NWA, please call Charlie Goddard at 518-370-0388. Meanwhile, we need stickers for next year's

harvest. Please consider cutting up your scrap lumber or saving your ripped cutoffs. Trim them to approximately 3/4" x 3/4" or 1" x 1" x 48" long and bring them to any meeting between now and next year. We need hundreds!!



C L A S S I F I E D S

FOR SALE: Green black walnut wood from 16 recently removed trees. 6/4 planks, 8"-14" wide, 8'-14' long. \$2-\$3/board foot, minimum purchase one trunk (five-seven planks). Columbia County location. Contact Paul at 518-828-2000 x229 (weekdays) or ps@haveinc.com, for details.



CHAPTER NEWS

Mid-Hudson Woodworkers

By Chuck Walker

Woodworking Show: The third annual chapter woodworking show was a great success. Over 200 people visited the display of handmade items on



The chapter show was held in the Hurley Reformed Church Hall.

Saturday, October 17. The diversity of pieces ranged from museum quality miniatures to a southwest inspired armoire.

Winner of People's Choice Award was Jack Maasz's "Glade Creek Mill". This design was inspired by Mike Williams in the Spring 2009 issue of Scroll Saw Woodworking & Crafts. It required over 1100 cuts and took several months to complete.

In addition to the display, woodturning and scroll-saw demonstrations were performed all day. A children's workshop allowed participants to make birdhouses or race cars similar to the Toy Factory at Showcase.

Exhibits also included luthier fixtures and jigs, vintage wood-working planes, and wood identification samples.

Many items were donated for the raffles; a separate raffle was conducted for a lighted Christmas

tree filled with handmade ornaments. Dap Cole made the base. Ron Mower and Bob Boisvert contributed most of the ornaments. Many thanks to all the members who donated items for the raffle and sale, or brought items for display!

Glass Whisperer: Pete Chast demonstrated glass cutting techniques at the November chapter meeting. Pete is an experienced stained glass artisan. He showed methods of work to ensure safe and accurate tooling

for non-tempered flat stock up to 1/4 inch thick.

Glass cutting relies on breaking the surface tension on flat stock with a carbide scribe or cutting wheel. The standard Fletcher tool has a rotating wheel, notches on the handle for nibbling narrow sections, and is topped with a round knob for lightly striking the glass.

Before the glass is cut, it must be thoroughly cleaned on the side to be scribed. Dirt is the main obstacle to a clean scribe. Kerosene is the cleaner of choice. Once cleaned, the scribing tool is applied with consistent pressure. If the glass does not immediately fracture along the scribe line, light taps with the knob will provide enough vibration to facilitate a clean crack. Another technique is to add a small amount of oil to the line that has been scribed. It seeps into the crack and assists the break as the glass is tapped.

Always cut glass on a padded surface to accommodate for imperfections on the work table surface. Newspaper works well and helps in clean up, catching the microscopic shards left behind. It is a good idea to sand the edges of the cut piece to minimize injury during handling.

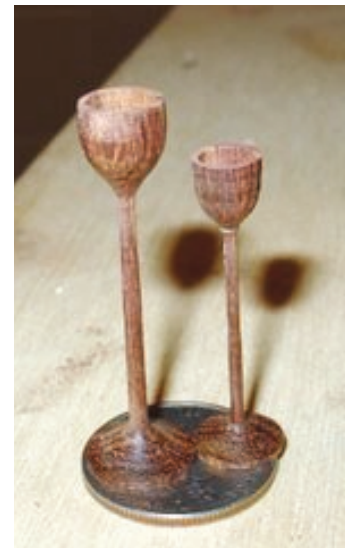
How many goblets will fit on a dime? Steve Sherman and Keith Tompkins tried to find out in their demo.



Pete Chast lightly taps along a scribed line on glass stock.



A pre-lit Christmas tree was raffled with base and ornaments completed by chapter members.



CHAPTER NEWS

Sacandaga Chapter

By Gary Spencer

The Sacandaga Chapter of the Northeastern Woodworkers Association had a scheduled meeting for November 11th, however it was rescheduled for the next day due to the facilities not being available.

Our program for this month was Jean Aldous. Her presentation was on scroll sawing techniques applied to a variety of different skill areas, i.e. Scroll Sawing Techniques for Woodcarvers, for Wood Turners, and techniques for other woodworkers. Jean brought many examples of scroll saw projects and materials sources and gave us a demonstration of many techniques. It was a great program, thanks Jean!

Our program for December 9th will feature Mike Kratky. His presentation will be "Tuning and Honing Handplanes and Chisels" He will also do a show and tell on antique planes that belonged to his Father. This should be an outstanding program!

Our regular monthly meetings are the second Wednesday of each month and begin at 7:00 P.M. at Mayfield High School woodshop. Our next regular meeting will be December 9th, 2009. Come on out!

Remember we have door prizes and light refreshments are served.

For Directions or information contact:

Clyde Cheney – 661-5138 • Ray Laubenstein – 863-6071 • Gary Spencer – 863-6433

AWA Monthly News

By Celia Carpenter

This November we were pleased to have another fine demonstration by Paul Petrie. His focus was on the embellishment of turned objects. He stated that no matter how detailed and how great the quality of the adornment, that it is still most important to turn a pleasing shape. I think he quoted "You can't make a silk purse out of a sow's ear."

The following are just some points that Paul made during his demonstration.

- First of all remember the **shape**
- When you copy the image you have decided on make sure it is as dark as it can be.
- Lighter wood works best for transferring the design
- Tape down your image
- When using oak add a coat of shellac to prevent running
- Freeclipart.com and Dover books for source of line drawings
- To create a sample board use model aircraft weight wood
- Use archival quality pens
- Pierce 90 degrees to surface
- Good magnification is important
- Sand with 400 grit holding finger behind for support.

If I have left too much out then I guess you just need to be there the next time he is the presenter!

Turned toys can also be fun for all. What can be turned and make a child of any age happy? Is it a yoyo? An airplane? Part of a train? We have all seen the wands and the tops too. The program for the AWA this month, December 2, 2009 will be presented by Warren Stoker, a toy maker who has a problem of letting a piece of wood go because it can be made into a toy some of which can be turned. Come, enjoy, ask questions, and learn. Warren wants to hear from you too as that is how new ideas become new toys and new smiles.

Question: Building Post and Beam Construction

By Lee Hilt

I am planning to build a workshop and want to use a Post and Beam construction. I would like to know if anyone in the club has any specific experience or general knowledge on the topic and if so, could I pick your brain? I am not looking for any physical or on-site help but simply someone who I can shoot the breeze with - chew the fat - and otherwise learn more than I currently know - which is limited. I have a healthy supply of logs of various types and sizes. I also own a portable sawmill. Please call or email me at the following. (518) 605-7076 (cell) – JAMTGS@EARTH-LINK.NET



Kaatskill Woodturners News

By Wally Cook

New Officers: Elections were held to elect new officers for the Kaatskill Woodturners. They are:

President:	Steve Sherman
VP:	Dick Dillon
Treasurer:	Matt Clarke
Secretary:	Wally Cook

Saturday Learn 'n Turn: Steve Sherman and Matt Clarke are supervising a hands-on, project-oriented turning experience every Saturday morning from 9Am to noon at the Opdahl building. The objective is to build skills by working on a series of projects: salt boxes and spoons, scoops, ladles, Christmas ornaments, tool handles, and other class efforts. Experimentation with surface finishing such as texturing, coloring, airbrushing, and other techniques will be employed.

The program is open to all NWA members. Those who have no experience with a wood lathe will be asked



Salt boxes completed at Learn 'n turn feature sliding lids



Variety of scoops finished by students

to take an orientation class with Steve prior to project work. There is no tuition, but donations to re-supply materials will be requested.

The typical format is to introduce the project with a demonstration and then break into supervised groups for hands-on turning. Any questions, please contact Steve (turnstar1@gmail.com) or Matt (mattclarke@verizon.net).



Jack Collumb with ladle

Tool Rest

Technique: Keith Tompkins hosted a discussion of the proper working height for a tool rest. He shared his experimentation with various adjustments to cutting height. For instance, it seems obvious that maintaining a tool rest height which is too high will have the consequence of inhibiting detail and depth of cut. Keith concludes that his preference is to work on a horizontal plane at the mid-point of the blank thickness, keeping tool handle parallel to the ground. Keith prefers to rotate his body around the cutting point, particularly when entering from an air-to-wood cut. Using this approach, he achieves greater control in tighter spaces. When light finesse cuts are required, rolling the cutting edge of the tool may be employed.

However, Keith has also experimented with keeping the tool rest at a lower height to gain access to smaller diameters, but still cutting at the mid-point of the blank. This position allows the tool to be anchored to the body, but also allows the tool to be held on its side with the flute 90 degrees to the work.

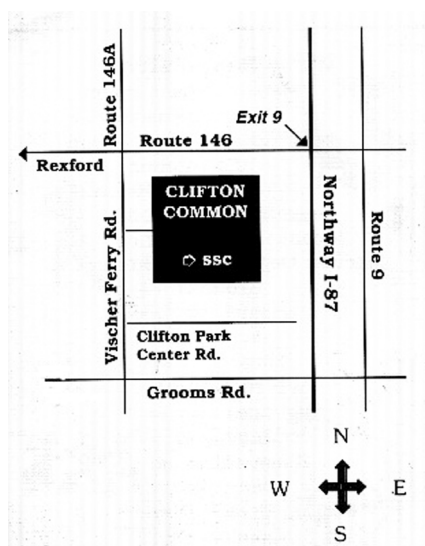
Such cuts are not possible with horizontal entry to the work. 🐼



Keith Tompkins demonstrating finial cutting



Northeastern Woodworkers Association
P.O. Box 246
Rexford, New York 12148-0246



December Meeting

Thursday, December 10, 2009, 7:00 PM
Shendehowa Senior Center
Vischer Ferry Road, Clifton Park

GENERAL MEETINGS AND SPECIAL EVENTS

For meeting cancellation
information,
call Ken Evans 753-7759
or Charlie Goddard 370-0388

NWA 2010 General Meetings

January 2010
Dave Mobley
Architectural Salvage

February 2010
Ed Contento
Central American Native Masks

March 2010
Warren Stoker/ Pete Howe
Millwork from a
professional perspective

April 2010
Charlie Goddard
Material preparation

May 2010
Mid-Hudson Chapter
Planes, Then and Now

July 2010
Roger Holmes
Picnic

SPECIAL INTEREST GROUPS

SPECIAL INTEREST GROUPS (SIGs)

Adirondack Woodturners Association - The AWA is active throughout the year. Meetings are every first Wednesday of the month (except in January and July when it is the second Wednesday), and are held at the Curtis Lumber conference room on Route 67, Ballston Spa. Beginners' sessions begin at 6 pm; the main program at 6:30 pm. Wednesday "Learn and Turn" sessions in Stillwater are also scheduled from 6 pm - 9 pm except on AWA member meeting nights. www.adirondackwoodturners.org Contact Ken Evans, 753-7759 or Kevans1@nycap.rr.com

Carver's Guild - meets every Friday at the Clifton Park Senior Center from 9:00 am to 1:00 pm. Sessions are intended for every NWA member who is interested in carving, from beginners to those wanting to learn a new technique. No reservations are necessary, just show up! Contact Bill McCormack, 233-7260.

Scroller's Guild - Meets on the third Wednesday of the month at The School at Northeast, 1821 Hamburg St., Schenectady. A beginner's session starts at 6:30 PM followed by a general meeting at 7:00 PM. Contact: Donna Phillips, (518) 372-3337 or dlphill@nycap.rr.com.

Kaatskill Woodturners - Meets the second Wednesday of each month at 7 p.m. at the Opdahl property in Hurley. Contact Matt Clark, (845) 454-9387.

Jim's "Hole in the Woods Gang"

Meets every Saturday, from 9:00 am until noon at Jim Kennedy's shop at 86 Guideboard Rd., in Halfmoon. (just 1 mile east of the Halfmoon Diner on Rt. 9). Our general purpose is public service work for various charitable organizations, including the Double H Hole in the Woods camp for children. We strive to foster a learning environment for our members through the projects we work on and the informal training/learning sessions given by and for our members. Sharing fellowship and relating experiences are a major part of our sessions, as we do accomplish many tasks during our times together as well. Contact Dick Flanders, (518) 393-5215 (rflander@nycap.rr.com) or Darrell Welch, (518) 477-8431 (ydwelch@taconic.net) for more information.

CHAPTERS

NWA Mid-Hudson -The chapter meets at 7:30 p.m. on the third Thursday, except July and August, at the Hurley Reformed Church. The Church is just off the the Hurley exit from Rte. 209. Right at the exit, right at the stop sign and left into the Church parking area. Contact Pete Chast, pchast@francomm.com.

NWA Sacandaga - The chapter meets at 7 p.m. on the second Wednesday of each month at Mayfield High School in the woodworking shop. Park by the section of the building that protrudes further into the parking lot and enter the nearest of the (5) doors. Contact Gary Spencer, 863-6433.