

# WOODWORKERS NEWS



Northeastern  
Woodworkers  
Association

May 2004, Vol. 13, Number 4

## May Meeting

- Pat McCord

### Segmented Turning with Keith Tompkins

7:00 p.m. Thursday, May 13, 2004  
Shaker Heritage Society Meeting House  
Albany-Shaker Road, Albany  
(near Albany airport)

Wrapping up our programs this year will be a presentation on segmented turnings by Keith Tompkins, an NWA member of the Mid-Hudson Chapter. As you may recall from the Member Profile in the April newsletter that featured Keith, he has been widely recognized for his turning work, especially his segmented pieces. Two of his pieces won ribbons (first and second) at *Showcase 2004*.

The business meeting starts at 7:00 PM, followed by refreshments, socializing and an opportunity to peruse the NWA library and Tool Crib. The May meeting is our Annual Meeting at which the election of officers will be held. This will be the last general meeting until September.

Don't forget to bring an item or two for Show and Tell. All of us are interested in seeing what is happening in other members' shops. 🐼



*First Place  
Turning - Spindle  
Keith Tompkins*



*Second Place  
Turning - Segmented  
Keith Tompkins*

## Election Time

- Charlie Goddard

In accordance with NWA bylaws, the election of officers will be held at the May General Meeting. The Nominating Committee will present John Michne as the nominee for Vice President/Program Chairman and Kitty Scharl as the nominee for Secretary. The by-laws provide that the Vice President/Program Chair succeeds to the presidency in the year following their election. Therefore, Pat McCord, the current Vice President, will become President for the coming year.

The Secretary and Treasurer are elected for two-year terms with the terms staggered so that one of these positions is filled each year. This year Kitty Scharl has agreed to accept the nomination for a second term as Secretary.

Additional nominations may be made from the floor prior to the election. Any nominee must be willing to accept the nomination and to serve if elected.

Chairpersons for standing and ad hoc committees will be determined by the Board of Directors. Those names will appear in the list of officers and chairpersons on page 2 in the July newsletter. Anyone interested in chairing or serving on any of the committees can contact Pat McCord by phone at (518) 439-1232 or email (ptmccord@mybizz.net). 🐼

## Birdhouses for the Hole in the Woods Auction

-Herm Finkbeiner

If you have started (or completed!) a birdhouse for the Hole in the Woods August fund raising gala, please bring it with you to the next general meeting on May 13th. Every birdhouse, whether finished or just started, will be an inspiration to those who haven't yet begun or will provide ideas for those who already have their birdhouse underway. 🐼

## OFFICERS

**President** - Wayne Distin 674-4171  
wpswan@capital.net

**Vice-President** - Pat McCord 439-1232  
ptmccord@mybizz.net

**Secretary** - Kitty Scharl 765-3189  
crowridge@empireone.net

**Treasurer** - Dale Swann 346-4172  
SwannD@RPI.edu

**Past President** - Jay Van Vranken  
664-3034 svanvran@nycap.rr.com

**Historian** -

Position to be Filled

**Executive Secretary** - Charlie Goddard  
370-0388 Cgodd@aol.com

## CHAIRPERSONS

### Mid-Hudson Chapter

Joe Mikesch, President 845-687-4285

### Sacandaga Chapter

Co-Presidents - Bob Beyer 883-3617  
Dick Edel 773-5345

### Education

Ken Evans 753-7759  
kevans1@nycap.rr.com

### Adult Programs

Position To Be Filled

### Kid's Programs

Dick Grimm 587-0030  
boltdmkkk@aol.com  
and

Austin Petrie 686-4285  
Holley222@cs.com

### Fiske Fund

Charlie Goddard 370-0388  
Cgodd@aol.com

### Hospitality

Position To Be Filled

### Library

Wilhelmina Evans 753-7759

wiltw0@nycap.rr.com

Jim Hartlage 370-4127

JMHartlage@aol.com

### Membership

Austin Spang 393-2859  
spang@nycap.rr.com

### Programs

Pat McCord 439-1232

### Publications

Fran Finkbeiner 371-9145

FranFinkbeiner@aol.com

### SHOWCASE

Charlie Goddard 370-0388

Cgodd@aol.com

### Tool Crib

Tom White 489-6360

white10@nycap.rr.com

### Videographers

Dave Ellison 872-0980  
ellisd@rpi.edu

Hans Kappel 861-8753

bluespruce@juno.com

Pat Pugsley 634-7144

ideas@mhonline.net

Bob Conahan 355-9032

conahanbob@hotmail.com

Kirk Hardenburg

725-1997

UNLESS OTHERWISE NOTED, PHONE  
NUMBERS ARE IN AREA CODE 518

# From the President

## - Wayne Distin

As my year as NWA president comes to a close, I want to thank all who have made this a fascinating year. For it is you the members of NWA who made this year happen. To the members who arranged and volunteered at the many events that took place this year, and to those who attended the various events and improved your skills and knowledge in woodworking, thank you! 🐾

# Annual Lumber and Tool Auction

## - Charlie Goddard

The annual lumber and tool auction will be held Saturday, September 25, 2004 in the Shaker Barn. Money raised at the auction goes into the Fiske Education Fund and is used for grants to attend woodworking courses.

The main item this year will be the walnut that was sawn last summer from a tree in a residential yard in Albany. Approximately 1,500 board feet are stored in the back part of the barn. Some of it is nicely figured. In addition, there will be some interesting lumber donated by Joshua's Trees.

If you have lumber or tools that you would like to donate for the auction, or know someone who does, please give me a call at 370-0388. If you do not want to donate the entire value we can sell the item(s) and share the proceeds. All donations to the Fiske Fund are fully tax-deductible. 🐾

# Best In Show at Long Island Woodworking Show Goes to Clark Pell

## - Pat McCord

The first place winner for the "Accessories" and "Marquetry" categories at this year's *Showcase*, Clark Pell, also claimed the Best In Show award at the Long Island Woodworking Show held on April 17th and 18th in Hempstead, Long Island. Clark's entry was a fly fishing box similar to the one at *Showcase*, but featuring a brown trout and made predominantly from goncalo alves, satinwood, holly and Macassar ebony. Clark estimates he spent about 100 hours making the box. Obviously, time well spent. Congratulations, Clark! 🐾



# Woodworking Weekend 2005

## -Ken Evans

The 2004 NWA Woodworking Weekend held at Sears in Colonie Center was by all accounts a great success. During its three-year history, the event has grown in size and enthusiasm from attendees. It is time to begin to think about a BIGGER and more extensive event, possibly at a site other than Sears.

To place this in perspective, NWA is thinking of an event of the size and complexity that would require a facility similar to the Saratoga Springs City Center or the Convention Center in Albany, NY.

I am seeking a group of NWA members who would be willing to meet on a monthly basis beginning in May 2004 to begin planning for the 2005 NWA Woodworking Weekend.

Such an effort will need people power related to the following:

Site Location	Marketing	
Program Selection	Setup and takedown	Other

This event has the potential to bring together 300-400 woodworkers from the northeastern U.S. for a great woodworking experience.

We need some help to make this happen. If you are willing to volunteer, please email or call Ken Evans at kevansl@nycap.rr.com or 518-753-7759. 🐾

# Annual Shop Tour

- Pat McCord

Six NWA members will open their shops for this year's Shop Tour on Saturday, May 15 from 1-5 pm. There are two each in the Schenectady/Niskayuna, Ballston Spa and Rexford areas. Take advantage of their generosity and spend a relaxing afternoon seeing how other members have set up their shops. Each location has directions and a phone number should you have difficulty finding them, and there will be a sign at each location to let you know you're at the right place. As a courtesy to the hosts, please wear your NWA name tag to identify yourself as a member.

## BALLSTON SPA AREA

**John Olenik, 4 Van Tassel Lane, Phone: 587-0306**

Take Route 50 south from Saratoga Springs or north from Ballston Spa. Turn west on Geyser Road (just north of SPAC); travel west on Geyser to Rowland Street. Turn right and proceed north to Ichabod Lane. Turn left on Ichabod and proceed to Van Tassel Lane, turn right and drive to number 4.

**Don Partridge, 539 Randall Road, Phone: 885-5231**

Take exit 12 off the Northway, proceed west on Route 67 to Route 50; take Brookline Road from Route 50 to Middle Line Road; turn north (right) on Middle Line Road; turn left onto Randall Road; proceed to top of hill and turn left onto Apple Tree Lane and proceed to the end of Apple Tree Lane to Don's shop. **OR** from Geyser Road turn south onto Middle Line Road; continue past Route 67 and take a right onto Randall Road; turn left onto Apple Tree Lane and proceed to the end of Apple Tree Lane to Don's shop.

## REXFORD AREA

**Jack Ericson, 938 Riverview Road, Phone: 399-0908**

From the south, follow Route 146 (Balltown Road) north to the Rexford bridge over the Mohawk. Cross the river and at the top of the hill on the north side (at the traffic light by the firehouse), turn left onto Riverview Road. Jack's house is on the left about 1/4 mile from the traffic light. Riverview Road is a county highway and it is very difficult to park off the road. Rivercrest Drive is about 300 feet west of Jack's house and is a wide town road with adequate parking on each side of the road.

From the north, follow Route 146 to the traffic light at the top of Rexford Hill (junction with Riverview Road, at the firehouse). Turn right, then see above.

**Herm Finkbeiner, 492 Riverview Road, Phone: 371-9145**

From the east, take Exit 8 off the Northway. Go west on Vischer Ferry-Crescent Road for about four miles into the center of Vischer Ferry. At the firehouse bear right (Riverview Road) and go about one mile. Herm's house is on the left just before the intersection of Sugar Hill and Riverview Road. The house is brown with an orange door set back from the road, with a pond near the road.

From the west, at the top of the Rexford Hill (Route 146, Balltown Road at the traffic light by the firehouse) go east on Riverview Road. Be careful to stay with Riverview at the intersection with Grooms Road. Go straight ahead even though the sign to Vischer Ferry points left. Herm is about four miles from the Rexford light, on the right, just after the intersection with Sugar Hill Road. **DO NOT** park on Riverview Road. There is space for a number of cars in Herm's two-part driveway; additional parking is available on the road just west of Herm's upper driveway (the road to the Vischer Ferry Power Station) and on Sugar Hill Road.

If the ground is soft, please do not drive on the lawn. Please enter the shop through the basement garage that is at the bottom of the driveway on the pond side.

## SCHENECTADY/NISKAYUNA AREA

**Bart Chabot, 1159 McClellan Street, Phone: 393-9918**

Take Exit 25 off the Thruway to I-890; turn right onto ramp at Exit 6 (Michigan Avenue); turn right onto South Brandywine Avenue; stay on South Brandywine (Route 146) and continue as it turns to North Brandywine; turn right onto Route 146 (Union Street) and then immediately turn left onto McClellan Street. Proceed to 1159. Bart's house is brick house with white porch. Please go down the driveway and enter through the Bilco door in the rear courtyard.

**Austin Spang, 2525 Hilltop Road, Phone: 393-2859**

From the intersection of Route 146 (Balltown Road) and Route 7 (Troy-Schenectady Road) in Niskayuna, go north on Balltown Road to Van Antwerp Road. There is a video store and CVS on the corner. Turn right onto an Antwerp Road passing CVS. Turn right onto Hilltop Road (third road on the right opposite Van Antwerp Apartments). Bear right as you go down the hill and continue on Hilltop Road. Austin's house is on the left, third house from the end of the street (blue/green with white trim). 

**WOODWORKERS NEWS** is published by the Northeastern Woodworkers Association for its members. The Association's aim is to provide a common meeting ground for lovers of woodworking who want to know more about wood and the techniques for forming it. The newsletter is published monthly. It is assembled in QuarkXPress 5.0 on a Macintosh G4, duplicated by Shipmates, and mailed to more than 700 addresses.



Your next issue of  
**Woodworkers News**  
will be published  
in early June.

Copy deadline: May 15  
Clark E. Pell, Editor 731-2475  
cepell@MSN.com  
Elizabeth Keays Graphic Artist  
Designer



## WEBSITE(S)

[www.woodworker.org](http://www.woodworker.org)  
[www.nwawoodworkingshow.org](http://www.nwawoodworkingshow.org)

Website Editor Bill Fahy 869-0954  
BBFahy1@nycap.rr.com

NWA maintains two websites,  
the first noted here  
operates continuously.  
We also offer selected  
links to other sites of interest  
to our membership.  
Webmaster - Justin Rohrer  
rohrej@nycap.rr.com

The second site operates from  
January 1 to May 30  
and carries specific  
information about SHOWCASE.  
Webmaster - Rich Pagano  
279-0936  
[Richpagano@earthlink.net](mailto:Richpagano@earthlink.net)



**NORTHEASTERN  
WOODWORKERS ASSOCIATION**  
P.O. BOX 246  
Rexford, New York 12148



# SHOWCASE 2004 WINNERS

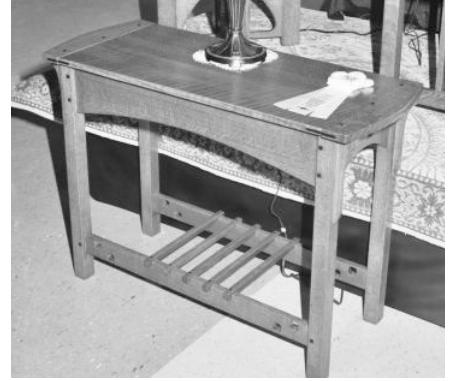
## FURNITURE – Tables, Beds



*First Place  
RC, Leblanc/Webster*



*Second Place  
Barry Middleton*



*Third Place  
John Olenik*

## FURNITURE – Cases, Cabinets and Desks



*First Place  
Bob Kehn*



*Second Place  
Russ Gleaves & Bill Coffee*



*Third Place  
William Fuhrmann*

## FURNITURE – Chairs



*First Place  
John Schultz*



*Second Place  
Skye Gregson*

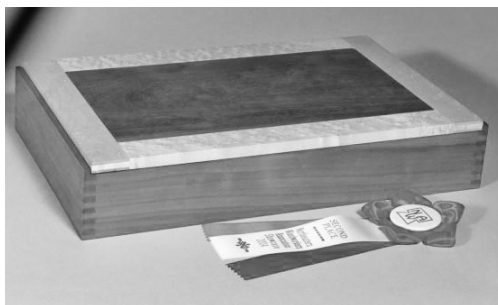


*Third Place  
Michael Sciocchetti*

## ACCESSORIES - Clocks, Boxes and Desktop Pieces



*First Place  
Clark Pell*

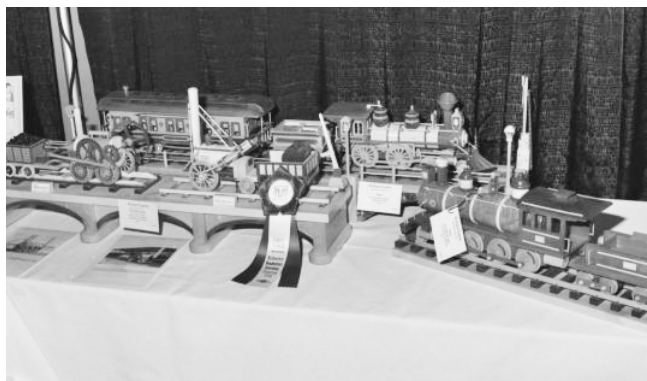


*Second Place  
Dan Dearstyne*

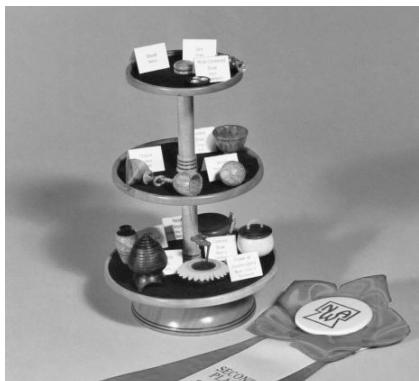


*Third Place  
John Olenik*

## TOYS/MINIATURES - Play things and Models



*First Place  
Richard Danz*



*Second Place  
Bob Ireland*



*Third Place  
Sandy Knudsen*

## CARVING - Representational, Conceptual, Decorative



*First Place  
Frank Ruiz*



*Second Place  
Joe Boek*



*Third Place  
Ernest LeClaire*



## TURNING – Faceplate



*First Place  
Steve Sherman*



*Second Place  
Richard Pagano*



*Third Place  
Paul Petrie*

## TURNING – Spindle



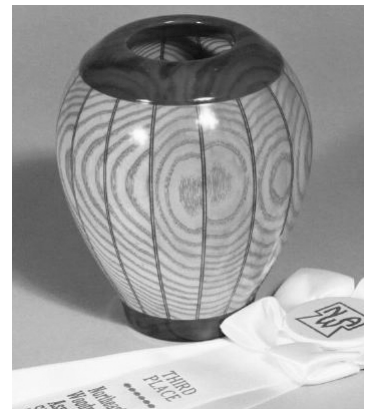
*Second Place  
Richard Pagano*



*Third Place  
Paul Petrie*



*First Place  
Richard Pagano*



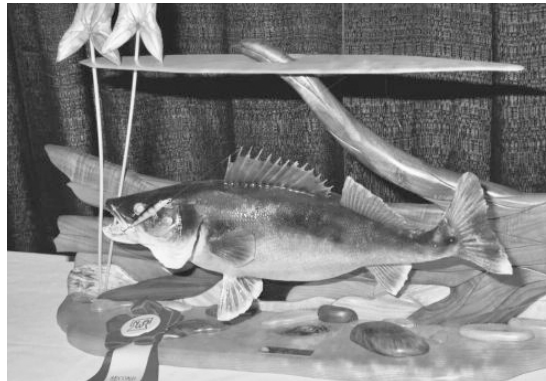
*Third Place  
Ronald Mower*

## TURNING – Segmented

## INLAY, INTARSIA, MARQUETRY



*First Place  
Clark Pell*



*Second Place  
Jeffrey Meuwissen*



*Third Place  
Ernest LeClaire*

## SCROLL SAWING



*First Place  
Yuliana Cummings*



*Second Place  
M.K. Purohit*



*Third Place  
Janice Butler*

## NOVICE



*First Place  
Rachael Bush*



*Second Place  
John Grossbohlhlin*



*Third Place  
John Skalla*

## OTHER



*First Place  
John Michne*



*Second Place  
William Wensley*



*Third Place  
Paul Busman*



## PROFESSIONAL



**BEST MAJOR PIECE**  
*Tom Wetzel*



**BEST DISPLAY**  
*Tom Benwake*



**BEST SMALL PIECE**  
*John Harris*



**JUDGES COMMENDATION**  
*Leonard Bellanca*

## CHAPTER NEWS

### *Mid Hudson Chapter News*

#### *- Wally Cook*

Positive feedback about the Mid-Hudson 'Practical Workshop' at Showcase 2004 was evident at the April meeting. President Joe Mikesh congratulated all the participants and award winners - and they all received a round of applause for a job well done!

Dap Cole reminded the group that all birdhouse entries must be brought to the June meeting. Win Crans and Duane Henry displayed birdhouses that featured different types of construction. Joe Kennedy, always on the leading edge of birdhouse fabrication, discussed his plan for a pyramid design. After requesting feedback from the group, Joe determined that perhaps the pyramid would be better applied to other purposes (see inset photograph); he was put in charge of our next order for hats!

Carl Ford presented a number of colorful kinetic mobiles patterned after butterflies, ducks, and airplanes. All these objects feature moving wings activated by central weights. The mobiles are constructed from 1/8" plywood; the pieces are scrolled and painted. Carl finds that a good source for the plywood is Condon Lumber. Scrolling enthusiasts should contact Carl for the specifications of the jig he built to find the center of gravity for these mobile objects.

The scrolling theme continued with Chuck Walker demonstrating a turntable storage unit for scroll saws. The unit was built with several concentric plywood circles, allowing multi-level storage. Chuck stores the saw blades in 1/2" clear plastic tubes, which are seated in holes drilled into each circular layer. To fit the 1/2" tubes, use a 13mm Forstner bit. Both the bit and the storage tubes can be ordered from Lee Valley tools.

Members brought a number of pieces for sharing and discussion. Joe Benkert, Terry Conlin, Win Crans, Carl Ford, John Franklin, and Joe Mikesh all passed around face plate turnings. Joe Benkert is the happy recipient of a freshly cut box elder. He reports that this wood is softer than maple and displays a beautiful red blush. Joe Mikesh brought an ambrosia bowl with an amazing pattern of grain and worm holes. Joe finished the bowl with two coats of beeswax, followed by an application of carnauba wax.

The group has produced many bud vases turned from ash baseball bat blanks, once again proving that many hands make light bud vases! The vases will be placed on the tables at the Mid Hudson Banquet scheduled for April 23.



*Ambrosia bowl turned by Joe Mikesh.*



*Joe Kennedy demonstrates alternative uses for his birdhouse design.*

### *Sacandaga Chapter News*

#### *- Gary Spencer*

Our April 14th meeting was a fascinating visit to the shop of Bill Wilson where he demonstrated the strip method of building a canoe. This was Bill's third canoe and he was doing an outstanding job. There was a good turnout and everyone was impressed.

Coming up on May 12th we will meet back at the Mayfield High School and our topic will be "Building Your own Log Cabin - Tips and Precautions". Our speakers will be Joe Piccalino and Gary Spencer who between them have built three log homes. This should be an interesting meeting for anyone who might be thinking of building a log structure from a home to a shed.

All Members of NWA are invited to attend our regular 7:00 P.M. meetings that are usually held at the Mayfield High School woodshop on the second Wednesday of each month. We have door prizes for attendees and light refreshments are served. For information or directions call Bob Beyer - 883-3617, Dick Edel - 762-4851 or Gary Spencer- 863-6433.



# Wood of the Month

- Ron DeWitt

## White Fir (*Abies concolor*) A Softwood Pinaceae - Pine Family

The fir species, about 40 in number, are quite widely distributed around the world; nine in North America including one into Mexico, five additional in Mexico and Guatemala, two in Africa, one in Europe and about 25 more scattered over Eurasia. As a group they are often referred to as the silver firs. Except for the balsam and Fraser firs, the firs common to the U.S. may also be called western firs.

The white fir (*Abies concolor*) may also be referred to as concolor fir, silver fir, white balsam, balsam fir or Colorado fir. The native range of this species extends from the Pacific coast mountain regions to central Colorado and from central Oregon and southeastern Idaho into Mexico, the most widespread of the western firs.

Subtle differences in leaf form and resin terpene content over the broad range of the species has resulted in two defined geographic varieties. *Abies concolor* v *concolor* or Rocky Mountain white fir is found in the eastern and southwestern portion of its range; *A. concolor* v *lowiana* or California white fir grows in the western portion of its range. In the interest of simplicity "white fir" is usually applied to both varieties and is done so in this article.

White fir does best in the central Sierra Nevada of California where it typically reaches 130-180 feet with diameters of three to five feet DBH (diameter breast high). The tree grows to 135 feet by four feet in Arizona and New Mexico. It does well in a wide variety of soil conditions but is more dependent on moisture and temperature. It may occur in pure stands or associate with mixed conifers as well as a variety of hardwood groups. White fir is considered to be shade tolerant and aggressive. It is easily damaged by fire or mechanical injury.

The Rocky Mountain variety favors high mountains with long winters, heavy snow pack and shorter growing seasons. A Rocky Mountain white fir champion tree is reported by the National Register of Big Trees to be 94 feet by six feet DBH, growing in Uinta National Forest, Utah.

The California variety thrives over a wider range of climatic conditions but does best in cold, high elevations with less rainfall and a longer growing season. The current record, found in Yosemite National Park, is 217 feet by 7 1/2 feet. A white fir in Salem, N.Y. is 84 feet by 2 1/2 feet.

The white fir is a big tree with a narrow, pointed crown that becomes more cylindrical with age. After the first five years or so growth becomes quite rapid. The whorled branches are short, symmetrical and horizontal. Leaves (needles) are spaced around the twigs but grow in two horizontal rows along opposite sides of the twigs. On upper branches the leaves are 1 1/2" - 2 1/2" long, bowing upward. On lower branches the leaves are 2" - 3" long in flat rows. Leaves are flat, keeled underneath, flexible and very short stemmed with a pleasant orange, balsam-like scent when crushed. The light blue-green color with white lines of stomata or breathing pores on both surfaces gives the leaves their noteworthy silver appearance. The leaves may persist on the trees for four to ten years.

Stout, smooth twigs are light brown or gray. Bark is light gray and smooth on young trees becoming very thick...to 6 1/2" at the base of the stem, developing deep furrows and hard scaly cork-like ridges as it matures. Female and male cones appear on the same tree, developing on the top-most year old branches. Female or seed cones mature at the end of their first

growing season. Typical of the firs, the cones grow upright. Cone bearing begins when trees are 40 years old and continues beyond 300 years with heavy cone crops appearing every three to nine years. White firs may live 400 or more years.

Until the 1960s white fir was ignored or considered undesirable on forestlands managed for timber. White fir was then recognized to be fast growing to large size and highly productive compared to its other forest associates, making it commercially important.

Wood of the white fir is white to yellowish brown or light brown. Growth rings are distinct and may be very wide to very narrow. Earlywood occupies more than half the ring, with a gradual transition to the darker latewood that may be rosy, red-brown or lavender. Heartwood is indistinct from sapwood. The wood is without a characteristic odor although it may have a slightly disagreeable odor when green. It may also have an unpleasant bitter taste. Grain is usually straight and even with a medium to coarse texture.

This wood is lightweight; specific gravity is about 0.39 at 12% M.C., weight is about 26 pounds per cubic foot, at 12% M.C., slightly heavier than our more familiar eastern white pine. The wood loses about half of its green weight when drying; shrink is typical of the softwoods at about 9.8% of volume, 7% tangentially and 3.3% radially. It dries easily with little degradation but some movement should be expected in service.

Mechanical properties, too, are typical of the softwoods; soft, not very strong, weak in bending, average in machining but excellent in gluing. It holds paint, other finishes and fasteners quite well but is not durable in soil or weather. It is said to "compare

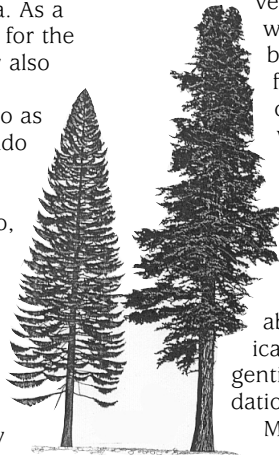
favorably" with eastern hemlock (not much of a recommendation!).

Woods of the firs are quite difficult to separate. Geographic origin is very helpful in identification. The firs lack resin canals and ray tracheids. Rays are very fine and indistinct to the naked eye. White fir differs from the other firs with its brown rather than pale yellow ray cells and an abundance of calcium oxalate crystals in its ray cells.

There are occasional skin, eye, nose and lung problems reported when working with some of the silver firs. Appropriate precautions are advised.

White fir is used chiefly in structural applications such as solid construction framing and plywood. Its lightweight, absence of odors and stains and clean appearance make it a desirable box and crate material. This wood is also used extensively for mill-work...sash, doors and trim. Pulp from this tree is used for printing paper or high-grade wrapping paper. Large numbers of white fir are grown for Christmas tree use in California.

White fir is in good supply and is being replanted heavily. In the sawmill it may be mixed with western hemlock, a look-alike, and sold with a "HEM-FIR" label. When reaching the east coast white fir is likely marked with the catchall designation and sold as "SPF," spruce, pine or fir. It is priced at the low end of the scale for construction grade lumber. 🌲



Rocky Mt. Variety California Variety

## WOOD

The heft and feel of a well-worn handle,  
The sight of shavings that curl from a blade;  
The logs in the woodpile, the sentiment of huge beams in an old-fashioned house;  
The smell of fresh cut timber and the pungent fragrance of burning leaves;  
The crackle of kindling and the hiss of burning logs.  
Abundant to all the needs of man, how poor the world would be without wood.

Everard Hinrichs c. 1860

# Trip to Berkshire Products (Car Caravan)

- Ken Evans

"Berkshire Products Inc. is a lumber supplier specializing in hard to find kiln-dried, wide, thick and figured woods. This includes quarter-sawn lumber, book-matched sets, matched fitches, natural-edged slabs and burls all ranging in thickness from 4/4 to 16/4. We pride ourselves on our vast selection. We stock over 100,000 bd ft of lumber, which includes lumber up to 48" wide. Our lumber is well displayed in nearly 1,000 easy access bins. We encourage walk-in customers to select their own boards so you get precisely the lumber that is required for your needs. We also offer custom sawing, kiln drying and millwork."

This paragraph from the website ([www.berkshireproducts.com](http://www.berkshireproducts.com)) of Berkshire Products would indicate it is a must visit place for woodworkers of all types.

They have lots of turning material...slabs and burls etc.

A trip to Berkshire Products is being planned for Saturday, May 22, 2004. Interested parties will meet in the parking lot off the garden center at Sears in Colonie Center at 7:00am with a departure time scheduled for 7:30am. Sharing a ride is encouraged!

The plan is to arrive at Berkshire Products by 9:30am, spend time browsing and buying, and to have a picnic lunch at their facility at 12:00pm. Bring your lunch and a folding chair.

Call Ken Evans with questions or to indicate your intent to participate at (518) 753-7759 or [kevans1@nycap.rr.com](mailto:kevans1@nycap.rr.com).

Directions to Berkshire Lumber:

## From the North:

1. Take the Massachusetts Turnpike to Exit 2
2. Head South on Rte 102 until you get to Stockbridge
3. Take a left onto Rte 7 South
4. Follow Rte 7 South through Great Barrington and Sheffield
5. Immediately after the Sunrise Diner turn Right onto Rte 7A
6. Follow Rte 7A for 1.8 miles. Look for our sign on the right hand side.

## From the South:

1. Follow Rte 7 North to Canaan, CT.
2. After the CT State Police Barracks turn left onto Rte 7A.
3. We are located approx 1.6 miles on the left hand side of the road.



Leisure is the most challenging responsibility a man can be offered.

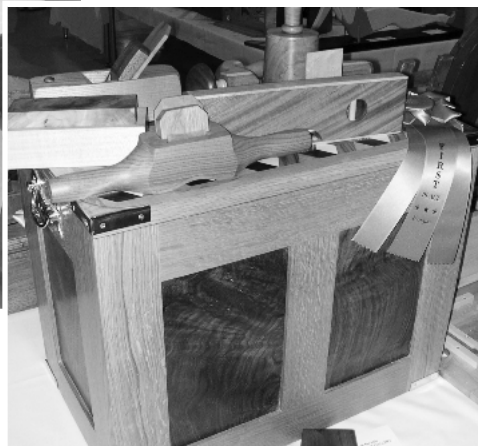
Dr. Wm. Russell

*47 members of NWA took a bus trip to the Hofstra Arena at Hempstead on Long Island to attend the Long Island Woodworkers Show on April 17, 2004.*



This golf table by Rachael Bush won 1st Place in the Novice category at the Northeastern Woodworkers Show and 2nd Place in the same category at the Long Island Show.

Two of many items on display at the Long Island Woodworkers Show included this wooden tool box filled with wooden tools, and a Chippendale reproduction of a foot stool.





## EXTRAORDINARY WOODS EXTRA LOW PRICES

### Joshua's Trees

Big Leaf Maple • Buckeye • Quilted Redwood  
Spalted Woods • Exotics • Free Forms  
Weird Burls • Live Edge Flitches

483 N. Moore Hill Road, Stephentown, NY 12168  
Fax 845-855-wood email joshuatrees02@msn.com  
800-745-3504

### Kiln Dried Hardwoods—In Stock!

Sold in random widths + lengths. Stored indoors.

#### Exotic Hardwoods

Cocobolo, Goncavo Alves,  
Agathis, Bloodwood, Peruvian  
Walnut, Philippine Mahogany,  
Honduras Mahogany,  
Brazilian Cherry, Canary,  
Bubinga, Zebra, Wenge,  
Purple Heart, African Mahogany,  
Bolivian Rose, Padauk, Teak,  
Spanish Cedar, Lacewood

## CURTIS



## LUMBER

Call our  
Hardwood Experts  
Dave, Trace, or Bob at  
1-800-724-9663

www.curtislumber.com

#### Domestic Hardwoods

Red Oak, White Oak, Ash,  
Hard Maple, Walnut,  
Basswood, Birch, Cedar,  
Premium Cherry, Birdseye  
Maple, Soft Maple, Cypress,  
Hickory, Cherry, Butternut,  
Tulip Poplar

Ballston Spa  
Rt. 67  
885-5311

Mon.-Fri. 7 am-7 pm  
Sat. 7 am-5 pm  
Sun. 9 am-4 pm



### ATTENTION WOODWORKERS!

**J. E. SAWYER & Co., Inc.**  
INDUSTRIAL & CONTRACTOR SUPPLIES

with branches in:

GLENS FALLS - JOHNSTOWN - LATHAM

800-724-3983

www.jesawyer.com

Carries all your woodworking needs. Names like:  
**JET\*MILWAUKEE\*DELTA\*POWERMATIC\*PASLODE**

**Save 10%**

Bring this Ad to Sawyer's and receive 10% off your next purchase of woodworking tools



## BUSH OIL

PREMIUM FINISHING OIL

### BUSH PRODUCTS INC.

P.O. BOX 769 - AMSTERDAM, N.Y., 12010

BUS # 518-843-3773 ♦ FAX # 518-843-2317

EMAIL : BushProducts@aol.com

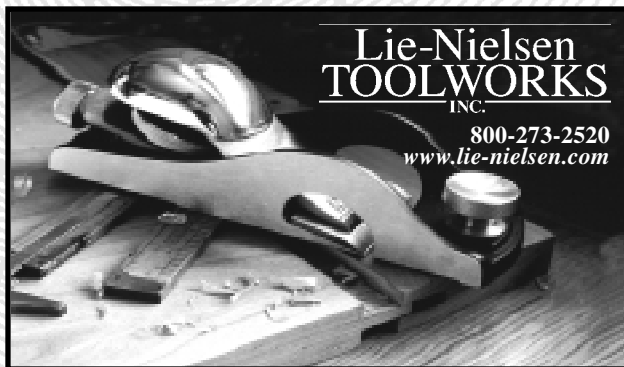


### CAMBium PRESS

P.O. Box 909  
Bethel, CT 06801  
203-426-6481

#### Distributed by

The Lyons Press  
123 W. 18 St, 6th Flr  
New York, NY 10011  
212-620-9580



## Lie-Nielsen TOOLWORKS INC.

800-273-2520  
www.lie-nielsen.com



Quality Kiln Dried Hardwoods and White Pine Lumber  
Wholesale, Retail

146 County Route 35A  
Portlandville, NY 13834

Phone: (607)286-9201  
Fax: (607)286-7136

www.wightmanlumber.com

Dave Muelrath

Exotic & domestic wood



2931 Route 121 E., Grafton Vermont 05146

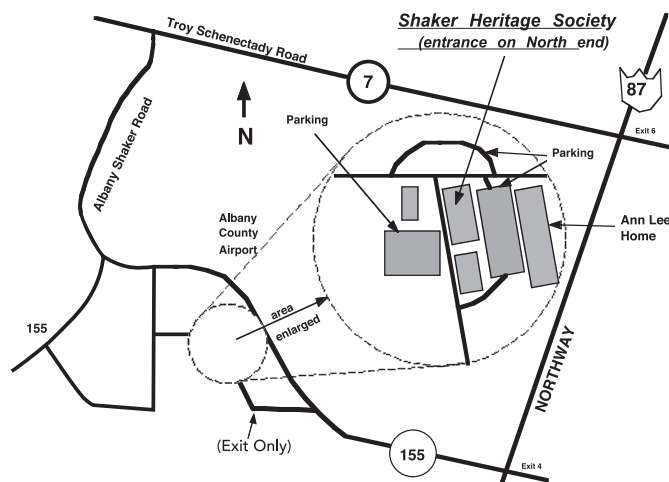
Ph: 802-843-2594

Fax: 802-843-2274

Email: trade@vermontel.net



Northeastern Woodworkers Association  
P.O. Box 246  
Rexford, New York 12148-0246



## NEXT MEETING:

7:00 p.m. Thursday, May 13, 2004  
Shaker Heritage Society Meeting House  
Albany-Shaker Road, Albany  
(near Albany airport)

## CALENDAR 2004

May, 2004	Home Workshop Tours Dates and locations listed in this newsletter
May 13, 2004	"Segmented Turnings" by Keith Tompkins Shaker Meeting House

## GENERAL MEETINGS AND SPECIAL EVENTS

## SPECIAL INTEREST GROUPS (SIGs)

Meetings are held at the Curtis Lumber Company conference room on Route 67, Ballston Spa. Details of specific events will be carried in the newsletter.

**Adirondack Woodturners Association** - The AWA is active throughout the year. Meetings are every first Wednesday of the month (except in January and July when it is the second Wednesday). Beginners' sessions begin at 6 pm; the main program at 6:30 pm. Saturday "Learn and Turn" sessions are also scheduled.

[www.adirondackwoodturners.org](http://www.adirondackwoodturners.org)  
Contact: Ken Evans, 753-7759 or [Kevans1@nycap.rr.com](mailto:Kevans1@nycap.rr.com)

**Carver's Guild** - Meets second and fourth Wednesday of the month at 7 p.m. Contact Bill McCormack, 233-7260.

**Scroller's Guild** - Meets the third Wednesday of each month at 6 p.m. at Woodcraft, Latham. Contact Will Charbonneau, 371-3709 or [wcharbol@nycap.rr.com](mailto:wcharbol@nycap.rr.com)

## CHAPTERS

**NWA Mid-Hudson** - The chapter meets at 7:30 p.m. on the third Thursday, except July and August, at the Central Hudson Electric Company Community Center, Route 28, Kingston. Contact: Joe Mikesch, (845) 687-4285

**NWA Sacandaga** - The chapter meets at 7 p.m. on the second Wednesday of each month at Mayfield High School in the woodworking shop. Park by the section of the building that protrudes further into the parking lot and enter the nearest of the (5) doors. Contact: Gary Spencer, 863-6433.

## SPECIAL INTEREST GROUPS