

WOODWORKERS NEWS



Northeastern
Woodworkers
Association

February 2014, Vol. 23, Number 2

February Meeting

Men with Musical Instruments Who Know How To Make Them

*Thursday February 13th, 2014, 7:00 pm
Shaker Heritage Society Meeting House
Albany-Shaker Road, Albany NY*

By Ken Evans

Once a year comedian Steve Martin (who is an accomplished Banjo Player) appears on the Late Show with a group of other accomplished banjo players and they play a few arrangements. The name of this group is "Men With Musical Instruments Who Know How to Use Them". From this was derived the title for this article about the February NWA Meeting program.

Martin Macica: Maker of Fine Stringed Instruments

"I started making instruments under local makers when I was 18 years old. In my early twenties, I apprenticed in New York City on 57th street next to Carnegie Hall. I studied and learned the art of violin making. Once I learned the standard, I decided to move back to my hometown of Schuylerville, New York. In 1988, I opened "Macica Violins" on Broad Street-downtown Schuylerville and have established my business/trade for the last 25 years. I have instruments in several symphonies/orchestras both locally and nationally. I have also established a presence in the Bluegrass realm with my mandolins. I try to maintain an excellent standard in my making. Every one of my instruments is completely handmade using only hand tools.

I will be talking about my approach to building violins, mandolins and guitars. I will touch on subjects such as: scroll making, dovetail joints, tools, roughing out tops and backs and more. I also will be playing a few Irish tunes with the other speakers." Website: www.macica.com

Paul Bussman: Paul Bussman makes exquisite Whistles--Pennywhistles. These, however, are not your average kids toy whistle, but absolutely wonderful musical instruments suitable for playing in a concert. Paul makes them from exotic woods and wonderfully machined metal parts. Testimonials on his website from satisfied customers says it

all. Paul is a former podiatrist (30 years) now working as an OR nurse at St. Mary's in Troy. Paul makes whistles in his basement workshop in Clifton Park. He started making whistles in 2000 under the tutelage of the late, great Glenn Schultz of Michigan. That story is sort of long and involved but pretty interesting. Paul plays many instruments in addition to whistle including Irish flute, mandolin, guitar and beginner banjo. Paul will tell us the entire story at the February Meeting. Website: www.busmanwhistles.com

Michael ZAGORSKI:

Michael builds guitars. He will tell us about types of guitars, tonewoods, guitar shapes v.s tone, types of necks, and the tools and finishes used in making guitars. Michaels Guitars have been displayed several times at Woodworkers Showcase. 🐾

**DON'T MISS THE OPPORTUNITY
TO JOIN ONE OR BOTH**

**HANDS-ON CLASSES
AT**

WOODWORKERS SHOWCASE 2014

**Garrett Hack will teach you
to make "Elegant Edges"**

**Sheila Landry class will teach you
scroll saw techniques**

Class dates: Saturday, March 29 &
Sunday, March 30

Class times: 10:30am to 1:30pm
or 2:00pm to 5:00pm

Class cost: \$65 includes entry to
Showcase, materials and tools

**To register for a class email
showe@nycap.rr.com or call 885-9331**

OFFICERS

President - Karen Arkison
nydivergirl@earthlink.net

Vice President - Rich Duval
rduval@nycap.rr.com

Secretary - Kitty Scharl 765-3189
crowridge@nycap.rr.com

Treasurer - Austin Spang 393-2859
spang@nycap.rr.com

Past President - George Rutledge
c.howie.dudat@gmail.com

Historian - Wayne Diston 674-4171
wdistin@nycap.rr.com

Executive Secretary - Charlie Goddard
370-0388 Cgodd@aol.com



CHAIRPERSONS

Mid-Hudson Chapter

John VanBuren, President
(845) 444-8281

Sacandaga Chapter

Co-Chairpersons

Jim Hopkins - 725-7322

Don Wilson - 883-3698

Gary Spencer - 863-6433

Education

Stan Blanchard

stanleywblanchard@gmail.com

Tom Moran

tmoran9@hotmail.com

Youth Programs

Wayne Diston - 674-4171

wdistin@nycap.rr.com

Fiske Fund

Max Bloomfield

max.bloomfield@gmail.com

Hospitality

Lew Hill

ssrhill@aol.com

Library

Darrel Welch - 477-8431

ydwelch@fairpoint.net

Membership

Fred Treeselt - 464-0517

ftresselt@hotmail.com

Programs

Karen Arkison - 598 4100

Publications

Wally Carpenter - 434-1776

c.j.carpenter@earthlink.net

Publicity

OPEN

Showcase Chair

Ken Evans - 753-7759

kevans1@nycap.rr.com



UNLESS OTHERWISE NOTED, PHONE
NUMBERS ARE IN AREA CODE 518

A Response To Charlie's Request

By Kirk Fox

Dear Charlie,

My son Sam is twelve years old and attends Southshire School in North Bennington Vermont, where I was asked some months ago if I would teach a woodworking course. I eagerly agreed to teach a course and inquired what type of projects they envisioned the students working on and it was suggested that they could build a public library. A public library, I learned, is a small house cabinet that is displayed in a public place where people can take or leave a book. What a great idea!

My first hurdle was to acquire a hand saw for the kids to use. I have wanted to acquire an older hand miter saw for a while and was excited to see while at the most recent NWA wood & tool auction that not one but two hand miter saws were up for sale! I sure hoped that I brought enough money!

The first miter saw to be bid on was a Swedish make with a 1" wide blade. Not what I had envisioned...but a nicely made saw, and what if I was outbid on the other saw? I bid away my heart racing with each higher bid...Yes I won! I was the successful high bidder!

I patiently waited until the end of the day for the next miter saw-an old Stanley with a very long back saw- to come up for auction. After my successful bid on a second miter saw, an older gentleman came up to me and told me that the miter saw had belonged to his uncle and was probably a hundred years old!

So Charlie, Thank you for the hard work that you and the other volunteers do to make the wood and tool auction happen. Thanks to the NWA's wood & tool auction I know four young woodworkers that are happily sawing wood!



We Are Watching!

By John Olenik

Thanks to advances in technology, and with the cooperation of the NSA, new surveillance systems have been installed in your workshops. We have now received the latest reports that some of you have complied with our earlier requests, and have started on your furniture projects for Showcase, and some are even completed. However, it seems that there are some who are lagging behind in their completion schedule, and worse, some who have not yet started.

Lack of furniture entries for exhibit could lead to dire circumstances!!

I recently attended the national Woodworking Show in Springfield Mass. to scope out the competition, and came away with a greater appreciation for what all of us at NWA accomplish with our Showcase. The "other show" is strictly a vendor show, and while it's always enjoyable looking at the latest tool and accessory offerings, soon the eyes glaze over, and the credit card becomes maxed out. With the exception of only three (3) pieces of furniture which were displayed, (two chairs, one table), there were no other examples of what can be accomplished with the use of all those tools.

This is precisely what sets NWA Showcase apart from the other shows. Our show exudes a sense of style and elegance, in part, because of the hundreds of beautiful exhibits that are displayed by our members. So you still have time to finish or even start that display project which makes Showcase such a unique and special event. Don't forget that your skill level is NOT important, since we strive to display ALL levels of woodworking, and if you cannot complete a piece in time, please submit it as a work in progress. Many of our visitors, who are not versed in woodworking, often ask how a piece is made. A work in progress can be a very interesting and educational tool. So one last call...get those entries in!

By the way, just kidding about the surveillance...for now!

The January Meeting

By George Rutledge

Kudos to all of the NWA members who braved the cold to attend our January meeting. They were rewarded for their effort with a fine presentation on the history and nature of sharpening stones by Patricia Dawson, a Product Manager from Norton / St.-Gobain, responsible for their sharpening stone line. "Trish" came all the way from Worcester to be with us and was ably assisted by Doug Jensen an Application Engineer for St.-Gobain working out their Watervliet facility.

Those of you who made the January meeting 2 years ago will recall Doug's enlightening exposition on coated abrasives. In addition to her Power Point show and lecture, Trish set up several tables with a variety of



Norton Sharpening Stones and invited our members to try them for themselves to get a feel for their varying characteristics.

I thought it was telling when Trish mentioned that most of the current Norton product line was available in a Sales Catalog from the early 1900's. A good stone like the edge tools they are used to sharpen are timeless. In fact the use of these stones albeit in different forms predate the use of metal and many of the quarry sources of the natural stones we still use today were worked by our distant predecessors.

As a natural stone user, I was amused by Trish's mock lament that one problem for her was that these stones last a lifetime thereby limiting repeat business. I also had to chuckle at the revelation that the most popular natural stone for home kitchen use is the Washita which due to its marble like coloring is the "prettiest" available. To be sure the presentation was not about natural stones alone. In fact at the end of the evening our guest gifted the NWA with a set of Norton's excellent waterstones.

Many thanks to Trish and Doug and Norton/Saint-Gobain for generously sharing their time and expertise.

CLASSIFIEDS

For Sale

Cherry boards, large & thick, lots of Veneer. \$4/BFor quantify discount. Email me for pics and list of sizes. Bernie 518-399-1572 Bkuczek@NYCAP.RR.COM

WOODWORKERS NEWS

is published by the Northeastern Woodworkers Association for its members. The Association's aim is to provide a common meeting ground for lovers of woodworking who want to know more about wood and the techniques for forming it. The newsletter is published monthly. The newsletter is available online at www.woodworker.org



Your next issue of
Woodworkers News
will be published
in early March
Copy deadline: February 15
Wally Carpenter, Editor
(518) 434-1776
c.j.carpenter@earthlink.net
Elizabeth Keays Graphic Artist
Designer



WEBSITE(S)

www.woodworker.org
www.nwawoodworkingshow.org

Webmaster - Kurt Hertzog
kurt@kurthertzog.com



**NORTHEASTERN
WOODWORKERS ASSOCIATION**
P.O. BOX 246
Rexford, New York 12148



CHAPTER NEWS

Mid-Hudson Chapter News

By Wally Cook

Scrollsawing Alternate Materials: Bob Boisvert described his experience scrolling alternate materials, based on an article by Wayne Fowler. Fowler laid out a step by step process for cutting snowflake patterns from copper or other metals. Bob used this process with acrylic and aluminum sheets. He used a #7 blade for the aluminum which worked well, but the same blade with acrylic simply melted the cut. He then stacked some acrylic sheets, screwed together and with duct tape between the plastic sheets – the cuts were crisp, but it also left a gooey residue. Bob found that a fine blade will not clear the chips efficiently; a #3 blade run slowly did not melt colored acrylic. A key to cutting plastic is to use material with a higher melting point and running the scrollsaw slower than normal. He sanded the aluminum with 2000 grit paper and found he did not need to sand the colored acrylic at all. The results were impressive!

Resources: Wayne Fowler, *Scrolling Metal*, Creative Woodworks and Crafts, Holiday, 2012

Name that Wood: Chuck Walker brought in an interesting piece of wood for identification as part of our regular feature of the chapter meetings. This piece is quite unique – and no one guessed that it was a slice of Cedar of Lebanon dating from 2000 years ago! The wood was unearthed in a Roman copper mine and had been used as a support timber. The slice is dotted with copper deposits that were absorbed in the cedar as seawater dissolved the copper ore and reacted to the sugars in the wood.

O Christmas Tree: Glenn and Debbie Decker won the Christmas tree and handmade ornaments raffled at the Chapter Show two years ago. Dap Cole made the base and many of the club members contributed ornaments. The tree was on display at the Hurley Town Hall during the holiday season this year.



Christmas tree created by Mid-Hudson on display at Hurley Town Hall

Opdahl Cleanup: A number of the club members, led by the Community Service (AKA, Wednesday Group) banded together to clean the upstairs of the Opdahl building and rearrange the chapter inventory of items for the Toy Factory. The effort took two afternoons and filled a two ton dumpster with items from the Opdahls' building. Les Woodruff, Viola Opdahl's nephew, supervised the sorting of materials. Many interesting artifacts were found in this historic structure – including very old electrical supplies from a business once operated by a reputed associate of Thomas Edison. An architectural drawing in mint condition was discovered for a building in Albany, dating to the early 1900's. We also took the opportunity to rearrange the equipment on the first floor for better access.

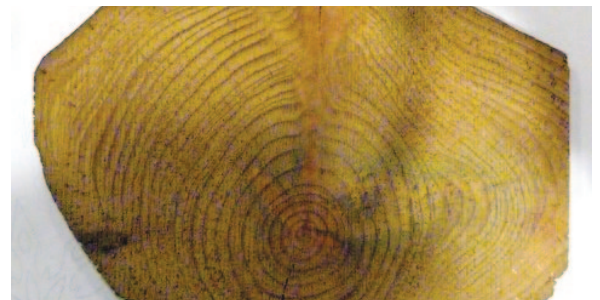
Library: Note that the chapter library is now on line! Items may be reserved online and picked up at chapter meetings. See Ron Roberts if you have questions.



Bob Boisvert discusses making scrollsaw ornaments from acrylic and aluminum



Show and Tell provided great pieces: from left John Grossbohlin's Scottish spurtle, Bob Boisvert's grape intarsia, Brad Conklin's new home for mice, and Bob Boisvert's Cat in the Bag intarsia



"Name that wood" highlighted a specimen 2000 years old!



Les Woodruff and gang cleaning the Opdahl building

NWA SHOWCASE & TOTALLY TURNING 2014 EXHIBIT ENTRY FORM

Saratoga Springs City Center & The Saratoga Hilton

Saturday and Sunday, March 29 & March 30, 2014, 10 AM – 5 PM

NAME: _____ PHONE: _____ Member: Yes _____ No _____ Professional*: Yes _____ No _____

Professionals: You are a professional if half or more of your livelihood is derived from woodworking. You may submit an entry in any category except Novice and Youth .

ADDRESS: _____ EMAIL: _____

NOTE: Display labels are made in advance using the information provided. The labels will be waiting at the Showcase Office when you bring your entry on Friday, March 28th. Labels for Judged Exhibit items must be picked up by 6:45. PLEASE only pick up labels for showpieces that you have with you, this helps the Judges.

PLEASE COMPLETE THE ENTRY FORM AND SEND IT TO: NORTHEASTERN WOODWORKERS ASSOCIATION

P.O. Box 246, Rexford, NY 12148

or complete online: www.nwawoodworkingshow.org

Please Print.

ENTRY DEADLINE IS MONDAY, MARCH 24, 2014

Any entry received after that date will not be entered for judging, but for display only.

JUDGED (only 1 per category)	NON-JUDGED DISPLAY ONLY	PREVIOUS WINNER	CATEGORY	TITLE	DESCRIPTION	LIST OF WOODS	FINISH USED

ENTRY CATEGORIES		
ADIRONDACK - Furniture and Accessories	TURNING 1 - Segmented	CARVING 1 - Chip
FURNITURE 1 - Tables, Beds	TURNING 2 - Bowls, Platters, Plates,	CARVING 2 - Relief
FURNITURE 2 - Cases, Cabinets, Desks	TURNING 3 - Vessels	CARVING 3 - CNC & Laser
FURNITURE 3 - Chairs	TURNING 4 - Pens	CARVING 4 - 3D in the round
MINIATURES & MODELS	TURNING 5 - Spindles & Ornaments	CARVING 5 - Bird and Fish
ACCESSORIES - Clocks, Boxes, Desktop Pieces, Picture Frames	NOVICE TURNER - age 17 and up, new to turning in the last 12 mo.	NOVICE CARVING - age 17 and up, new to carving in the last 12 mo.
TOYS AND PLAY THINGS	WOODEN MUSICAL INSTRUMENTS 1 - String	INTARSIA
BOATS	WOODEN MUSICAL INSTRUMENTS 2 - Non-String	MARQUETRY
SHOP EQUIPMENT	JEWELRY	SCROLL SAWING
NOVICE FLAT BOARDER - age 17 & up, new to wood working in the last 12 mo.	ALTERNATE MATERIALS - Non-Wood, using wood-working tools	MISCELLANEOUS - any piece not fitting into above categories
YOUTH - age 16 and under	NO NWA MEMBERS CHALLENGE FOR 2014. COMING BACK FOR 2015!	

ENTRY RULES

Any woodworker may exhibit his/her work. You do not need to be a NWA member. There is no entry fee.

Entry forms must be received by March 24, 2014 to be eligible for competition. Late entries will be entered for display only.

All Showcase exhibit items must be brought to the City Center between 3:00 pm and 7:00 pm, Friday March 28, 2014.

Exhibits are not to be removed from the floor before 5 pm Sunday.

You may exhibit any number of pieces in more than one category, but only one piece per category for judging.

Award winning pieces from a previous Showcase event are not eligible for competition, but may be entered for display and will be acknowledged as previous winners.

There must be at least three entrants in a category for an entry to be judged.

The exhibit hall is not a commercial area. Price tags or literature other than small business cards are not allowed and will be removed and disposed of.

The decisions of the judges are final. At the discretion of the judges, some awards may not be given.

Judges have the right to re-categorize entries.

★ To encourage more entries & pre-registration, NWA Showcase is having a raffle. Each pre-registered piece, judged or non-judged, brought to the Exhibit Hall earns you a raffle ticket. You can choose which items you would like to win. Prizes total over \$500. Each person will only be allowed to win one prize. This will be determined by the order drawn. Check out the NWA newsletter for more information!

AWARDS

BEST IN SHOW: One from any entry

PROFESSIONAL EXCELLENCE: One each category except for Novice and Youth categories

FIRST PLACE: One each category

SECOND PLACE: One each category

THIRD PLACE: One each category

HONORABLE MENTIONS

RICHARD PAGANO MEMORIAL AWARD FOR TURNING

CARVERS SIG BEST IN SHOW: one from any carving entry

BEST NEW CARVER: one

QUESTIONS?

Contact

Ken Evans, Showcase Chair (518) 753-7759, kevans1@nvcap.rr.com

Pam Curtis, Judging Co-Chair (518) 374-9562, pam4arts@aol.com

Surprise Guest Speaker introduces Banjo Men at AWA Presentation

By Kurt E Roullier

Photos by Kurt E Roullier

John Heimke introduced “Ken’s brother” as a spoof to Ken Evans due to his being down to the weather and unable to do the presentation, wore a pair of fake glasses with a nose and mustache and started the presentation off by saying “Hi, I’m Ken’s brother and I’m here to do the presentation due to the fact that Ken can’t be here”. So let the music begin. From that point on, John with the help from George Jones who both are making banjos now with guidance from the gifted instructor, Ken Evans went through step by step from beginning to end every jig and part it takes to build a banjo. They did it in such a way that everyone there now has a better appreciation of what it takes to make a banjo. It makes you want to start building one yourself! If you’d like to build one Ken will be happy to help and on Friday’s I’m told you can learn to play the banjo from 9:30 to 12:30 AM. If you are interested, contact Ken Evans for details at 518 753 7759, 518 281 0779 or kevans1@nycap.rr.com. Upcoming Presentations are February, Don Orr, spinning tops and March Jerry Sambrook, Offset thin stemmed Goblets. For suggestions, comments or articles regarding AWA Newsletter contact: Kurt E Roullier 518-283-4743 or, KRoullier@nycap.rr.com



Guest Speaker



Banjo Demo

Instant Gallery Photo – 2 AWA members show and describe their work

Photos by Kurt E Roullier



Left to Right:

George Jones shows a Spalted Beech bowl with a Walnut Oil finish.

Jack Dejnozka shows a custom made stream line pen made from old blue jeans and CA glue.

January's Instant Gallery

A Perfect Marriage

Photos by Kurt E Roullier and Al DelSignore, Jr.

The reason I titled this article “A Perfect Marriage” begins with something that happened to all of us in one way or another that caused us to join AWA. In Bob DelSignore’s case his brother-in-law invited him to a wood working show; which turned out to be Totally Turning. What he saw he liked so much he joined the club, right then and there. In a short period of time and with the help of the friends he made at the club he became very proficient at turning bowls, pens and other items. It turns out he not only loves turning pens and other things, he discovered he enjoyed the kindness and knowledge shared amongst everyone in the club.

When his dad, Al Jr., moved to Clifton Park, he thought he would try wood turning so he could spend more time with his son. He found out that he likes woodturning and he’s good at it, too. Bob also has a twin brother, Al who has also started wood turning. In addition to woodturning, all three have a passion for classic cars. Al Jr (aka dad), has a 1965 Comet Cyclone and has the wood (Black Walnut) to turn a set of pods for 3 gauge housings that will be mounted to his dash. When you see the three of them (Bob, his brother and his dad) laughing, helping each other and just plain having a good time with others you know why this is a perfect marriage between AWA and friends. If you know someone who likes woodworking and is just like Bob (and all of us a while ago) when we started in this club show them this article. So they too can have “a perfect marriage” between wood turning and friends. 🐶



65 Cyclone



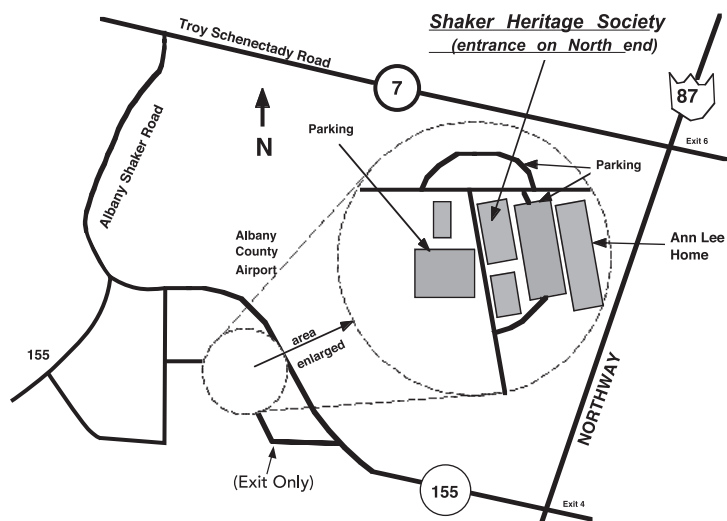
Comet gauges



Bob and dad



Northeastern Woodworkers Association
P.O. Box 246
Rexford, New York 12148-0246



February Meeting

Thursday February 13th, 2014, 7:00 pm

Shaker Heritage Society Meeting House

Albany-Shaker Road, Albany NY

GENERAL MEETINGS AND SPECIAL EVENTS

For meeting cancellation
information,
call Ken Evans 753-7759
or Charlie Goddard 370-0388

February 13, 2014

"Men with Musical Instruments who
know how to make them

March 13, 2014

Ben Barrett "Berkshire Veneer"

April 10, 2014

Garrett Hack "TBA"

May 8, 2014

Mid Hudson "TBA"
Election of Officers

SPECIAL INTEREST GROUPS

SPECIAL INTEREST GROUPS (SIGs)

Adirondack Woodturners Association (AWA) - The AWA is active throughout the year. Meetings are held the first Wednesday of the month (except in January and July when it is the second Wednesday), and are held at the NWA Learning Center located at 15 Solar Drive, Clifton Park, NY from 6:30 PM to 9:00PM.

Wednesday "Learn and Turn" sessions occur on all other Wednesdays at the NWA Learning Center. These sessions run 6pm-9pm. www.adirondackwoodturners.com **Contact:** Ken Evans, 518-753-7759 or kevans1@nycap.rr.com

Scroller's Guild - Meets on the first and third Thursday of the month at the NWA Learning Center located at 15 Solar Drive, Clifton Park, NY. A beginner's session starts at 6:30 PM followed by a general meeting at 7:00 PM. **Contact:** Jeanne Aldous at AMJAMt2@aol.com or Barbara Nottke at scroller87@aol.com or 869-6268.

Kaatskill Woodturners - Meets the second Wednesday of each month at 7 p.m. at the Opdahl property in Hurley, NY. **Contact:** Matt Clark, (845) 454-9387.

NWA Crafters - Meets every Saturday and Tuesday, from 9:00 am until noon at the NWA Learning Center located at 15 Solar Drive, Clifton Park, NY. The Crafters provide public service woodworking for various charitable organizations, including the Double H Hole in the Woods camp for children and the GE Elfuns toy modifications group, and the Make A Wish Foundation. Sharing information, fellowship, and relating experiences are a major part of these sessions. **Contact:** Dave Axton (518) 237-6942, daxton@nycap.rr.com, Wayne Distin (518) 674-4171, wdistin@nycap.rr.com Steve Schoenberg (518-371-1260), sschoen1@nycap.rr.com for more information.

The NWA Wood Carvers SIG - Meet each Thursday at 5:30 p.m. until 9 p.m. all year except the 2nd Thursday of each month at the NWA Learning Center located at 15 Solar Drive, Clifton Park, NY. Programs are determined at the previous weekly sessions. Discussions start at 7PM. The goal is to promote the art of Wood Carving. Individual private sessions are available Wednesday evenings by appointment. Wood, tools, and patterns are available. **Contact:** Ray Gannon. LoRayG@Gmail.com

CHAPTERS

NWA Mid-Hudson - The chapter meets at 7:30 p.m. on the third Thursday, except July and August, at the Hurley Reformed Church. The Church is just off the the Hurley exit from Rte. 209. Right at the exit, right at the stop sign and left into the Church parking area. **Contact:** Pete Chast, pchast@francomm.com.

NWA Sacandaga - The chapter meets at 7 p.m. on the Second Wednesday of each month at 55 Second Avenue, Mayfield, NY. **Contact:** Gary Spencer, 518-863-6433.