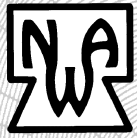


WOODWORKERS NEWS

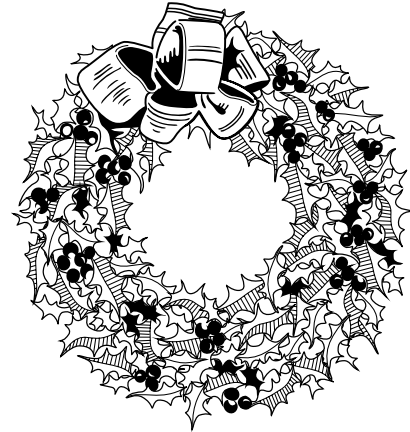


Northeastern
Woodworkers
Association

December 2007, Vol. 16, Number 12

Family Night Auction

Thursday, Dec 6th, 7:00 pm
Clifton Park Senior Center
Clifton Commons
Vischer Ferry Road, Clifton Park



BETTER TO GIVE THAN RECEIVE!

Repeat Message from the President:

By Peter Howe

After the success of the auction at last year's December family night we are expecting to repeat that success at this year's family night. We will again need your HELP and donated items for the auction.

We have shown a few examples of the donated items made by our talented members that will make great Christmas gifts for the winning bidders or a keepsake piece for their home.

Bart Chabot, our resident auctioneer and humor producer, will add his talents to the festivities. Time constraints to make an item will not take you off the hook. You may have a treasure at home just collecting dust that someone may love to possess.

I look forward to seeing you all at a great evening full of fun. If you have any questions, please call me at (518) 885-9331 or email me at phowe1@nycap.rr.com 🐾

Charlie Goddard: Significant Contributor

By Chuck Hill

A huge, gnarled maple tree overhangs the driveway, garage, and part of the house. "It's air conditioning," says Charlie Goddard. Beneath the tree is a red, 1970 Corvette. Old cars are one of Charlie's hobbies. This Corvette, ten years newer than his first one, is a "money pit," he says. A fully restored 1930 Model A Ford sits inside the garage. Charlie received it as a Christmas gift in 1956 and drove it to high school in Simsbury, Connecticut.

The home's original garage was replaced with a larger structure that houses a two-car garage and a wood-working shop on the ground floor and office, studio, and storage areas on the second floor. This newer building is attached to a beautiful 19th-century colonial home in Niskayuna. Charlie has lived there since the early 1970's with Karen, his wife of 44 years. She, too, hails from Simsbury, CT (they were high school sweethearts!) and is the one who uses the above-garage studio -- for her artistic endeavors. One of their three sons is a professional woodworker in California, one is a mechanical engineer in Connecticut (and father of Charlie's three grandchildren), and one is a groundskeeper at a local golf club.

Charlie's other hobbies include fishing, hunting, and travel, and he and Karen spend time each year at a Vermont farmhouse that has been in his family for over 50 years.

One glance at his wood shop confirms that Charlie is an organized man. A table saw, workbench, and assembly table reside in the center of the rectangular shop. Behind the workbench on a long wall is a counter or work surface with storage below it, hand tools and supplies above it, and light streaming in through exterior windows and a door. A full array of power tools occupies most of the space around the other three walls, and every tool that needs it is connected to a central dust collection system that can be turned on simply by pulling open the appropriate tool's blast gate. Other interesting items in the shop are a router table that will hold the



Continued on Page 2

OFFICERS

President - Pete Howe 885-9331

phowe1@nycap.rr.com

Vice President - Warren Stoker 439-6089

wstoker@nycap.rr.com

Secretary - Kitty Scharl 765-3189

crowridge@empireone.net

Treasurer - Austin Spang 393-2859

spang@nycap.rr.com

Past President - Ken Evans 753-7759

kevans1@nycap.rr.com

Historian -

Position to be Filled

Executive Secretary - Charlie Goddard

370-0388 Cgodd@aol.com

CHAIRPERSONS

Mid-Hudson Chapter

Joe Kennedy, President 845-473-1598

jkenn23333@aol.com

Sacandaga Chapter

Co-Presidents

Cliff Danke - 883-6011

Carl Siegle - 853-3866

csiegle@nycap.rr.com

Education

Herm Finkbeiner 371-9145

hfinkbei@nycap.rr.com

Adult Programs

Position To Be Filled

Youth Programs

William Van Brunt 767-3060

wvanbrun@nycap.rr.com

Fiske Fund

Joe Kennedy (845) 473-1598

JKenn23333@aol.com

Hospitality

Al and Emily Stahl 587-2420

astahl@nycap.rr.com

Library

Wilhelmina Evans 753-7759

wiltw0@nycap.rr.com

Membership

Susan Howe 885-9331

Programs

Ken Evans 753-7759

kevans1@nycap.rr.com

Publications

Wally Carpenter 434-1776

c.j.carpenter@earthlink.net

SHOWCASE

Ken Evans 753-7759

kevans1@nycap.rr.com

Tool Crib

Gerry O'Brien 459-9266

go12211@yahoo.com

Videographers

Dave Ellison 872-0980

ellisd@rpi.edu

Hans Kappel 861-8753

bluespruce@juno.com

Pat Pugsley 634-7144

ideas@mhonline.net

Bob Conahan 355-9032

conahanbob@hotmail.com

Kirk Hardenburg

725-1997

UNLESS OTHERWISE NOTED, PHONE
NUMBERS ARE IN AREA CODE 518

Fiske Fund

By Joe Kennedy

So far this quarter we have one application pending. **Stan Coventry** will take a continuous arm settee construction class at the John Campbell School in North Carolina. We still have time to receive your application before year end.

Two issues that came up recently deserve mention. First, a member is merely encouraged, but not required, to give a report on the class he or she takes. If anyone feels uncomfortable giving a report, that is not a problem. A written report for the Newsletter would suffice. Second, Fiske Fund awards are not based on financial need. Just because a member feels he or she can easily afford a class is not a bar to obtaining an award. I think woodworkers can easily find ways to spend their money on tools or wood. 🐼

Charlie Goddard

Continued from Page 1

router horizontally above the table as well as vertically below the table, a lathe ("horizontal boring machine" he calls it), an authentic Emmert patternmakers' vise, and, importantly says Charlie, a sink.

Charlie's interest in woodworking dates back several decades, but that interest was magnified when he joined NWA at one of its earliest Woodworking Showcases, and then again when retirement in 1996 allowed more time for hobbies. He has never attended a woodworking school, but has learned from other NWA members, from NWA programs, from a lot of reading, and, of course, from trial and error. He is well known for superb jewelry boxes and for furniture repair, but has also built a wide array of other projects, including cabinets, bookcases, tables, a mantel, a grandfather clock, blanket chests, Adirondack chairs, and a superb entertainment center that sits prominently in his living room. He sells some of his work, and his furniture repair services, but advertises only by word of mouth. "Seeing the smile on their face" is his favorite form of compensation from owners of the furniture he repairs.

Charlie earned Bachelor's and Master's degrees in civil engineering from Worcester Polytechnic Institute in Massachusetts. He then served in the army for two years, teaching radiation-shielding protection to both civilian and military students. He moved to the Albany area in 1968 for a job in waste management with the NY State Department of Health. That led in 1970 to a job in hazardous waste management with the NY State Department of Environmental Conservation. He rose through the ranks there to become Assistant Director of the program, finally leaving under an early retirement program in 1996. One of the most memorable times in his career was in the late 1970's, when his organization uncovered the environmental disaster created by chemical wastes in the now-infamous Love Canal section of Niagara Falls, NY.

Although Charlie was not present at the birthing of the NWA in 1991 (he joined two or three years later), he is one of the people whose contributions have been highly significant in the club's successful growth. He has used his organizational, administrative, leadership, and teaching skills to help the club in many ways. He was Chairman of the Toy Factory at the Woodworkers Showcase for two years and then stepped up to General Chairman of the Showcase for seven years. Another past activity was serving six years as Chairman of the Fiske Educational Fund. Currently, he is a member of the Education Committee, the Program Committee, and the Board of Directors; he organizes the annual lumber and tool auction; and he serves as the Executive Secretary of the NWA. He has lectured at the Showcase, taught classes in the NWA educational program, served as the main speaker at a General Meeting, and authored many articles for the **Woodworkers News**.

In his role as Executive Secretary, Charlie receives and processes e-mail from the club's website; picks up, sorts, and distributes the club's incoming snail-mail; writes a good deal of the club's outgoing correspondence; and prepares the agenda for the meeting of the Board of Directors every other month.

The success of any hobby club depends on the volunteer efforts of its members. With members like Charlie Goddard, the NWA will continue to flourish. 🐼

Showcase Entry Forms

By Charlie Goddard

Each year those who organize the show have near heart failure when the numbers of entries are much too low and the show is only a few days away. No matter how much we plead many entry forms are submitted late.

The committee has decided that we should offer some form of encouragement for getting entry forms in early. So, those who get their forms in early will be eligible for a drawing. The actual prize (or prizes) has not been determined. We will try to select something which will be universally desirable.

Showcase is only about four months away. Hopefully you have decided what you will enter and are fast at work making sawdust. If you have not exhibited your work in the past, this is your year. Just get your entry form in early and become eligible for a nice prize. 🐾

SHOWCASE 2008 April 5 and 6, 2008

4 months to go!

There will be an **EARLY ENTRY Raffle!**

WOODWORKERS NEWS is published by the Northeastern Woodworkers Association for its members. The Association's aim is to provide a common meeting ground for lovers of woodworking who want to know more about wood and the techniques for forming it. The newsletter is published monthly. It is assembled in QuarkXPress 5.0 on an iMac G5, duplicated by Shipmates, and mailed to more than 1,000 addresses.



Your next issue of
Woodworkers News
will be published
in early January Copy deadline:
December 15
Wally Carpenter, Editor
(518) 434-1776
c.j.carpenter@earthlink.net
Elizabeth Keays Graphic Artist
Designer



WEBSITE(S)
www.woodworker.org
www.nwawoodworkingshow.org
Blog Site:
<http://woodworkerorg.blogspot.com/>

Website Editor
Position to be Filled

NWA maintains two websites,
the first noted here
operates continuously.
We also offer selected
links to other sites of interest
to our membership.
Webmaster - Justin Rohrer
rohrej@woodworker.org

The second site operates from
January 1 to May 30
and carries specific
information about SHOWCASE.



**NORTHEASTERN
WOODWORKERS ASSOCIATION**
P.O. BOX 246
Rexford, New York 12148



**Warranted Green Windsor
CHAIRS.**

THE subscriber informs his friends and customers, that he has removed from the shop on Moore's wharf, to a shop next below the Draw-Bridge, in Fore-Street; where may be had, Green Windsor Chairs, of all kind, and Cabinet Work, of all sorts, equal to any imported. Chairs taken in and painted.

EBENEZER STONE.

N. B. English and West-India Goods taken in payment.

Adirondack Woodturners Association Monthly News

By Celia Carpenter

From the Desk of the Librarian:

Washington County Fair would like a wood treadle lathe and someone to demonstrate at the fair next year. If anyone has one or knows of one, please get in touch with Betty Andrews. Remember that the county fairs have been a great source for new members. Betty Andrews 518-854-7522

Instant Gallery:

This month's gallery again represented the incredible talent of our members. It has been suggested that members also bring in *mistakes* so that all can learn from one another as what not to do.

There were several examples of Christmas decorations, wine stoppers given as tokens for a wedding, and smaller projects good for Christmas presents.

New People:

There were at least three people at this month's meeting that first time visitors. The presidency is in the process of putting together a teaching schedule which will reinstate the beginning turning part of the meeting. It has been suggested that several people teach from an established format. This way more people can be involved and yet still have guidance if they are unsure of demonstrating.

Wednesdays at Stillwater:

We were all very surprised to hear that several classes had to be rescheduled due to the flooring be refinished at the center. The communication of the change was made available late Friday night 11-09. We need to thank Gerry O'Brien and Betty Andrews for all of the telephone and emailing that was necessary to communicate to all of the participants. All Wednesdays will continue at 6pm after Thanksgiving and the other classes have been rescheduled. Thank you for your patience.

November Demonstration:

We were fortunate to have a demonstration by Paul Petrie this month. Paul demonstrated a Christmas ornament that the design was



found in a magazine. Paul taught that we need to apply the technique to our decoration but as always to put a bit of our own creativity into our work. We are not to make carbon copies of another's work.

Paul is an excellent teacher and with ease demonstrated a beautiful ornament that is a turning that most would enjoy no matter what level you are. There is a similar article that Paul referred to but in Popular Woodworking December 2005 pg 90 of similar ornaments.

Thank you Paul for sharing your expertise and for always reminding us to "dance".



C L A S S I F I E D S

Woodmizer LT15 for sale

Contact: Michael Keefe: woodsculptor@verizon.net

Jet 1236 lathe \$400

Good condition. Includes face plate. Head swivels and extended arms are included, as well as live center.

Email: pieper43@hotmail.com for pics

WIDE WHITE PINE BOARDS -- Total of 39 boards: 15 pcs 6/4 x 10', 13 pcs 6/4 x 8', 11 pcs 8/4 x 8'. Most boards (32) are 18-25 inches wide, some with live edge, some not. A few are narrower. Most are nearly clear, but all have varying amounts of "character" in the form of some stain and worm holes. The widest boards -- those from the center of the tree -- only have "character" on the edges. These are green; take them home and dry them for the winter. \$1.50 - \$2 /BF.

John Sullivan, Kipp Mountain Tree Farm, Chestertown -- 518-494-3292



KWA News

By Wally Cook

Day-O: Bill Grumbine -- yes, the man who turned a 14' mast for his sailboat (using two lathes simultaneously) -- is not easily intimidated. However, when Bill transverse-mounted a fireplace log on the Vega to make his 'banana bowl', he cleared out the first two rows of the audience!

Not to worry. Bill explained the precautions necessary to safely turn the banana bowl, starting with full face protection and proper mounting of the blank. Also, it wasn't a whole log -- just one merely split down the middle. Yet with the speed cranked up and the blank turning between centers, it did resemble a propeller.

Bill guided us through the steps required to tame the log and make an oval natural edge bowl. The speed does need to be high (approx 2000 rpm) to allow the chisel to encounter wood and avoid gaps.

First the bottom of the bowl is feathered out from the center. A tenon is cut and it's time to re-chuck the blank and remove the bark. The piece is turned between centers for as long as possible. Light cuts are employed, leaving mass in the center, until final hollowing. When the inside is done, a friction chuck is pressed into service and the tenon is cut almost through. A carving tool is used to cut the remains of the tenon from the piece.

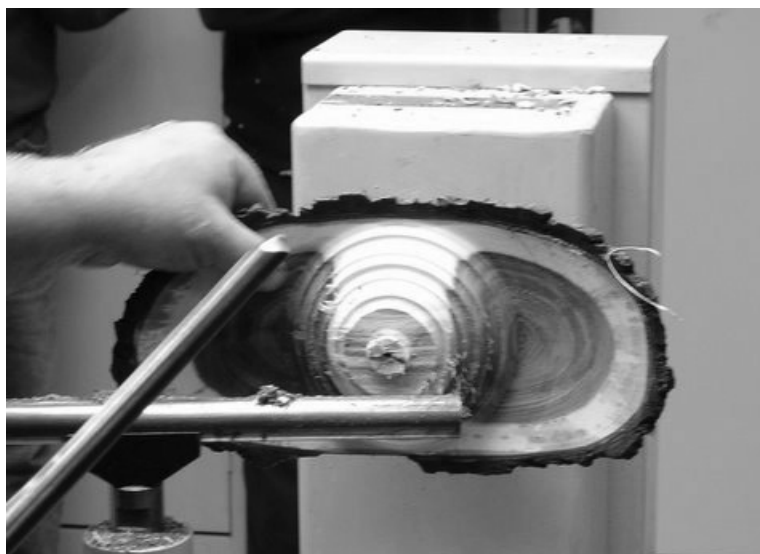
As Bill says -- probably not a first time bowl project? and maybe not the eleventh either! Check out www.enter.net/~ultradad/blkswan6.html to learn how Bill turned the mast for his sailboat. 🐼



Finished banana bowl.JPG: Bill and finished banana bowl



Shear scraping is used to fair the outside of bowl



Mass is left inside the bowl as long as possible

Evans'isms

A woodworker had a neighbor that always borrowed his tools and never returned them, one day frustrated with this he phoned him.

"Could I put my table saw and drill press in your garage?" he inquired.

"Sure," his neighbor replied, " But why?"

"Just to have all my tools in one place." he retorted

CHAPTER NEWS

Mid-Hudson Woodworkers Show

By Wally Cook

On Saturday, November 3 the Mid-Hudson Chapter put on its first annual woodworking show. This was a small affair compared to Showcase, but we think it was a great start for our chapter.

Although our space was limited (60' X 40'), we were able to display a great deal of work by our members, including turnings, scrollsaw items, boxes, chairs, tables, cabinets, guitars, etc. We also had ongoing demonstrations by our turners and scrollers as well as

hand tool demonstrations and a children's work-shop. We also had a nice display of various types of wood. Out in the parking lot there was a large Woodmizer operating for most of the day. Finally, we had a raffle of members' work as well as a sale of selected members' works.

All in all, we in the Mid-Hudson Valley are quite pleased with this first attempt at our own show. We were especially

happy to see that the people who attended seemed to enjoy the experience -- in fact six new members signed up at the show. Also, while not quite as important, we finished the event with positive net revenue.

We really appreciate the support from the many people from the Albany area who came down to spend some time with us.



Jack Maasz's fretwork



Kids built tool totes from kits



Bob Johnston's scale RR pieces



Jack, Bob, and Frank worked the scrolling demo



Keith Tompkins and Steve Sherman worked on dueling lathes to create the smallest turnings



Show included larger furniture pieces, including this chest by Al Shinker

CHAPTER NEWS

Sacandaga Chapter News

By Gary Spencer

The Sacandaga Chapter of the Northeastern Woodworkers Association last met on November 14th. Our featured speaker was Don Flaws and his topic was on antique woodworking tools.

His presentation was "Antique Woodworking Tools of Upstate New York and nearby New England Areas". Don proceeded elaborate on what makes antiques tools valuable, how to maintain them how they evolved to modern day woodworking tools, how they were used and what kind of woods were utilized to make them. He had a good sample of his more than 500 wooden woodworking tools. There was much interest and a chance to put hands on some rare objects of the yesteryears. It was a very interesting program. Thanks to Don for a fine program.

Upcoming for December 12 the Chapter will welcome a return by Dale Brown a furniture maker par excellence. Dale is a member of NWA and has had many pieces entered into the Annual Showcase with resulting numerous awards. Dale's topic will be on the design features and skills necessary in building Federalist Period furniture. This should be an Outstanding Program.

Don't forget that we have refreshments and door prizes at each meeting.

Our regular monthly meetings are the second Wednesday of each month and begin at 7:00 P.M. at Mayfield High School woodshop. Our next regular meeting will be December 12th, 2007. Come on out!

For Directions or information contact:

Cliff Danke -883-6011

Carl Siegel -853-3866

Gary Spencer -863-6433

Beginning Woodturning Class

By Ken Evans

BEGINNING IN FEBRUARY 2008 I WILL OFFER MY BEGINNING WOODTURNING CLASS AT MY HOME IN VALLEY FALLS, NY.

THESE CLASSES ARE OFFERED TO CLUB MEMBERS (NWA) WITHOUT CHARGE. (Well, not quite, you must agree to try your best to enter a wood-turned object into Showcase.)

CLASSES MEET ONCE PER MONTH ON THE TUESDAY BEFORE THE WEDNESDAY AWA MEETING.

If you are interested in taking this class, please contact: Ken Evans 518-753-7759 before December 20, 2007.

Shop size is limited so attendance is limited and the history of these classes over the past 12 years indicates they will fill quickly.

Please have the following information ready when you call.

Your Name:

Your Home Address:

Phone number:

Email address:

WOODTURNING DATES FOR 2008

These are dates for a TUESDAY class!

February 5

March 4

April 1

May 6

June 3

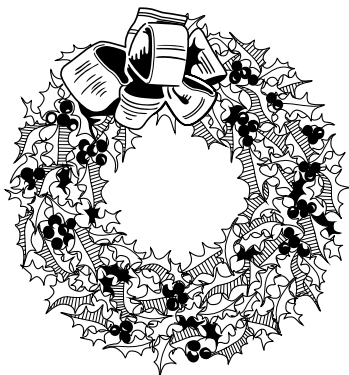
July 10 (This is a Thursday)

August 5

September 2

October 1

November 4



**Family Night on
December 6
will be held
at the
Clifton Park Senior Center**





Northeastern Woodworkers Association
P.O. Box 246
Rexford, New York 12148-0246



NEXT MEETING:

Thursday, Dec. 6th, 7:00 pm
Clifton Park Senior Center
Clifton Commons
Vischer Ferry Road, Clifton Park

GENERAL MEETINGS AND SPECIAL EVENTS

NWA Program Schedule 2007-2008

December 6, 2007
Family Night and
Member Donated Auction

January 10, 2008
The Workbench (Herm Finkbeiner)

February 14, 2008
Dutch Ship On Rust (Local construction
of the first Dutch ship built in the USA)

March 13, 2008
Musical Instruments Making

April 10, 2008
Fly Rod making
(Howard Bartholomew)

May 8, 2008
Spec. display (By Mid Hudson Chapter)

For meeting cancellation
information,
call Ken Evans 753-7759
or Charlie Goddard 370-0388

SPECIAL INTEREST GROUPS

SPECIAL INTEREST GROUPS (SIGs)

Adirondack Woodturners Association - The AWA is active throughout the year. Meetings are every first Wednesday of the month (except in January and July when it is the second Wednesday), and are held at the Curtis Lumber conference room on Route 67, Ballston Spa. Beginners' sessions begin at 6 pm; the main program at 6:30 pm. Saturday "Learn and Turn" sessions are also scheduled. www.adirondackwoodturners.org
Contact Ken Evans, 753-7759 or Kevans1@nycap.rr.com

Carver's Guild - meets every Friday at the Clifton Park Senior Center from 9:00 am to 1:00 pm. Sessions are intended for every NWA member who is interested in carving, from beginners to those wanting to learn a new technique. No reservations are necessary, just show up! Contact Bill McCormack, 233-7260.

Scroller's Guild - Meets on the third Wednesday of the month at The School at Northeast, 1821 Hamburg St., Schenectady. A beginner's session starts at 6:30 PM followed by a general meeting at 7:00 PM. Contact: Donna Phillips, (518) 372-3337 or dlphill@nycap.rr.com.

Kaatskill Woodturners - Meets the second Wednesday of each month at 7 p.m. at the Opdahl property in Hurley. Contact George Norton, (845) 331-1705.

Jim's "Hole in the Woods Gang"

Meets every Saturday, from 9:00 am until noon at Jim Kennedy's shop at 86 Guideboard Rd., in Halfmoon. (just 1 mile east of the Halfmoon Diner on Rt. 9). Our general purpose is public service work for various charitable organizations, including the Double H Hole in the Woods camp for children. We strive to foster a learning environment for our members through the projects we work on and the informal training/learning sessions given by and for our members. Sharing fellowship and relating experiences are a major part of our sessions, as we do accomplish many tasks during our times together as well.
Contact Dick Flanders, (518) 393-5215 (rflander@nycap.rr.com) or Darrell Welch, (518) 477-8431 (ydwelch@taconic.net) for more information.

CHAPTERS

NWA Mid-Hudson - The chapter meets at 7:30 p.m. on the third Thursday, except July and August, at the Hurley Reformed Church. The Church is just off the the Hurley exit from Rte. 209. Right at the exit, right at the stop sign and left into the Church parking area. Contact Joe Kennedy, (845) 473-1598

NWA Sacandaga - The chapter meets at 7 p.m. on the second Wednesday of each month at Mayfield High School in the woodworking shop. Park by the section of the building that protrudes further into the parking lot and enter the nearest of the (5) doors. Contact Gary Spencer, 863-6433.