

WOODWORKERS NEWS



Northeastern
Woodworkers
Association

August 2008, Vol. 17, Number 8

The GREAT 2008 NWA PICNIC

By *(the almost remorseful) Ken Evans*

What a great PICNIC it was. There were by unofficial count about 130+ folks in attendance, the weather cooperated and not a drop of rain fell, the food was terrific as always, and the desserts were beyond description. It was wonderful to see an increase in the younger crowd and with them the children. A picnic needs to have children and we did this year. Maybe next year we need a "sack race". I don't think my back will do a sack race.

The new NWA LOG TRAILER was there with logs brought in from some distant site for sawing. Pretty nice rig, if you ask me. Slick as a whistle it loads and unloads BIG logs by a wench and pulley system only an engineer could devise and operate. This trailer will bring many logs to the Shaker site for sawing and eventual sale at the yearly Fiske Auction in September. If you have or know of any logs available to NWA, please call Charlie Goddard at 518 370 0388.

Joe Kiaunis was there with his sawing machine sawing the logs brought by the NWA LOG TRAILER. This machine does so much work in so little time. It always draws a crowd of interest and this year produced a good deal of free wood for the gang. Now for the contests which are so much a part of the day.



This year we had a new contest. Make something from one board foot of wood. As you know, a board foot is a piece of wood 12 inches by 12 inches by 1 inch or 144 cubic inches. So, any configuration of wood which yields 144 cubic inches is a board foot. For instance a piece 4 in. x 4 in. x 9 in. is 144 cubic

inches, thus a board foot. Pay attention here as there may be a test at next year's picnic. Well, any way the challenge was to use only one board foot of wood to make something. WOW, a board foot is a lot of wood and some fine items were made. Warren Stoker made an entire train set out of a board foot of maple and took first place in the competition.

In the plain competition which involves planning a board with your hand plane to see who will produce the longest and thinnest shaving, the competition this year was fierce. There were many more entries than in former years. This was likely the result of two tool sales sponsored by NWA and Lie Nielsen tools. There were planes in competition that cost more than some cars this writer has owned. These streamlined babies shinned, sparkled, and sliced through the wood with the ease of a hot knife through warm butter. WOW, shavings and the smell of shavings were everywhere. The event was watched by a HUGE crowd not wanting to miss a single swoosh of a plane. Stanley, Record, Bedrock, Lie Nielsen, and Miller Falls were all represented in the competition. The winning shaving was produced by Ken Miller and his low angle Lie Nielsen plane. The shaving was truly amazing. It was the entire length of the board, only .002 inches thick and Ken's sharpening technique obviously flawless.

I know you are wondering about the performance of my Miller Falls No. 9. I am happy to report it did

Continued on Page 7

Heads Up - NWA Monthly Meetings

By *Charlie Goddard*

Our meetings will be starting again in September! As a heads up, our friends at Shaker Museum will plan to talk about Shaker Furniture. Next month's newsletter will contain a summary of our exciting schedule of events.

Our Mid-Hudson and Sacandaga Chapters have taken a little time off for summer fun and will be back to their normal activities soon! 🐸

OFFICERS

President - Warren Stoker 439-6089
wstoker@nycap.rr.com

Vice President - Owen Arkison
518 459-5348

owen.Arkison@earthlink.net
Secretary - Kitty Scharl 765-3189
crowridge@nycap.rr.com

Treasurer - Austin Spang 393-2859
spang@nycap.rr.com

Past President - Pete Howe 885-9331
phowe1@nycap.rr.com

Historian - Darrell Welch (518) 477-8431
ydwelch@fairpoint.net

Executive Secretary - Charlie Goddard
370-0388 Cgodd@aol.com

CHAIRPERSONS

Mid-Hudson Chapter

Joe Kennedy, President 845-473-1598
jkenn23333@aol.com

Sacandaga Chapter

Co-Chairpersons

Clyde Cheney - 661-5138
Ray Laubenstein - 863-6071
RLAUB@Roadrunner.com

Education

Herm Finkbeiner 371-9145
hfinkbei@nycap.rr.com

Adult Programs

Position To Be Filled

Youth Programs

Ray Gannon 518-664-2229
raymond.gannon@wildblue.net

Fiske Fund

Joe Kennedy (845) 473-1598
JKenn23333@aol.com

Hospitality

Al and Emily Stahl 587-2420
astahl@nycap.rr.com

Library

Wilhelmina Evans 753-7759
wiltw0@nycap.rr.com

Membership

Susan Howe 885-9331

Programs

Ken Evans 753-7759
kevans1@nycap.rr.com

Publications

Wally Carpenter 434-1776
c.j.carpenter@earthlink.net

SHOWCASE

Ken Evans 753-7759
kevans1@nycap.rr.com

Tool Crib

Gerry O'Brien 459-9266
go12211@yahoo.com

Videographers

Dave Ellison 872-0980
ellisid@rpi.edu

Hans Kappel 861-8753
bluespruce@juno.com

Pat Pugsley 634-7144
ideas@mhonline.net

Bob Conahan 355-9032
conahanbob@hotmail.com

Kirk Hardenburg
725-1997

UNLESS OTHERWISE NOTED, PHONE
NUMBERS ARE IN AREA CODE 518

President's Message

By Warren Stoker

The heat of the summer will soon give way to the itch to get back to a project this fall. This is the time I think about upgrading my skills. Be certain to look over the list of classes being offered for your enjoyment and skill development. Gerry O'Brien has taken over the Education Committee along with the scheduling of all those wonderful classes where we can find how to built it or build it better, use that tool more efficiently and safer, or just think through a project more completely. Gerry will put the classes on the Blog as well as have lists at the meetings. Please read Gerry's article in this newsletter. Enjoy and learn. 🐾

June Board Meeting

By Warren Stoker

We had reports from Education (a great list of classes), Membership (we are now at 853), Program (Owen has it well in hand and will report himself), Showcase (Ken will be setting up the monthly meetings soon), Tool Crib (Gerry O'Brien is moving to Education so we have a slot to fill), Jim's Shop (Dick Flanders has an extensive list of projects).

Peter Case outlined the changes that will take place for Totally Turning. Along with Ken Evans, they are moving along rapidly to get everything in place. Ken Evans explained the problem of NWA storage and a solution at Stillwater Senior Center. Pete Howe updated us on the log trailer, its use, its storage, and its accessibility.

There were a number of questions about our insurance policy coverage. Bill Van Brunt will review the coverage we have and report on what need to be done, if anything, to give us coverage. Part of the discussion included the log trailer, the SIGS, and the equipment stored in various locations. 🐾

Add a Little Class to Your Life

By Gerry O'Brien

It doesn't seem possible, but NWA's summer hiatus is rapidly drawing to a close and it's almost time to dust off the benches, tune up the machinery and get the Classes at Stillwater back into full swing. We've been fortunate to be able to offer a variety of topics for your enjoyment in the past, and the upcoming "season" should be no different. There will be classes for the hand tool enthusiast, project based sessions which highlight a particular woodworking skill or technique, workshops to help you find solutions to some holiday gift-giving dilemmas as well as special opportunities to get up close and personal with renowned experts at 'down-home' prices. The shop machinery series will be back to help you safely get the most out of the equipment in your own shop. We'll even have a few choice sessions dedicated to those who focus their efforts on circumferential variances (aka woodturning).

If you've previously taken some classes at Stillwater, we hope you'll come back again this year. If you haven't taken a class yet, you really should give it a try. I think you'll agree that these workshops are a good value and will help you get even more enjoyment out of your woodworking. You'll also have the opportunity to get to know some fellow NWA members while you socialize and share a few laughs. With gas prices on a steady climb, it's also a great time to team up with a friend and take a class together...there's nothing like a little friendly competition to help you hone your skills just a bit sharper.

As usual, classes will be announced several different ways:

Class registration will be conducted at each month's General Meeting.

A list of upcoming classes will appear in each month's newsletter.

Continued on Page 5

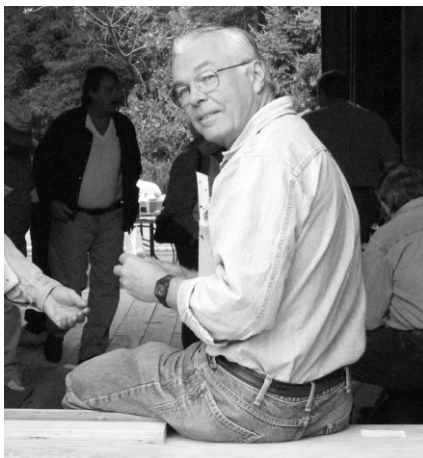
Get Ready for the Annual Wood Auction

By *Charlie Goddard*

The September 20 Annual Lumber and Tool Auction is going to be bigger and better (if that's possible). Please contact Charlie soon if you have tools other wood related materials you wish to donate for the auction.

**Annual Lumber and Tool Auction
September 20, 2008
Shaker Barn, Albany, NY**

Next newsletter will include
a listing of items which
will be up for sale.



Charlie Goddard taking a short break at auction



Pre-auction viewing and planning



2007 auction was well attended

WOODWORKERS NEWS is published by the Northeastern Woodworkers Association for its members. The Association's aim is to provide a common meeting ground for lovers of woodworking who want to know more about wood and the techniques for forming it. The newsletter is published monthly. It is assembled in QuarkXPress 5.0 on an iMac G5, duplicated by Shipmates, and mailed to more than 1,000 addresses.



Your next issue of
Woodworkers News
will be published
in early September
Copy deadline: August 15
Wally Carpenter, Editor
(518) 434-1776
c.j.carpenter@earthlink.net
Elizabeth Keays Graphic Artist
Designer



WEBSITE(S)
www.woodworker.org
www.nwawoodworkingshow.org
Blog Site:
<http://woodworkerorg.blogspot.com/>

Website Editor
Position to be Filled

NWA maintains two websites,
the first noted here
operates continuously.
We also offer selected
links to other sites of interest
to our membership.
Webmaster - Justin Rohrer
rohrej@woodworker.org

The second site operates from
January 1 to May 30
and carries specific
information about SHOWCASE.



**NORTHEASTERN
WOODWORKERS ASSOCIATION**
P.O. BOX 246
Rexford, New York 12148

The Lesser Known

By Wally Carpenter

In recent years, I have fallen into the same habit as so many of you; wood collector. Its not that I am a collector of various types of rare and exotic woods to possess examples. Rather, I see some very nice boards at what I perceive as reasonably priced and I buy it and I usually have something in mind as I make the purchase but soon forget why I bought it once it's added to the "pile".

Having confessed this, I will also admit I am always looking for places where I can find those fine boards. We are very fortunate to have several sources in our area such as Curious Woods, Berkshire Products, Joshua's Trees, and others. While these are great suppliers for our habit, I am always interested in some of the smaller (even backyard) suppliers that most folks never hear of. I thought of creating a new column which I will call "**The Lesser Known**". If any of you would like to add articles under this title, please send them to me !

Robinson Hardwood -

So, I've decided to start with a young couple located in Williamsville, Vt. Robinson Hardwood is owned by and operated by Steve Robinson with the assistance of his lovely girlfriend Hillary Newton. You may have also had the pleasure of visiting with them this past year at Showcase where they had an impressive selection of local North East Hardwoods.



Steve and Hillary

Both Steve and Hillary have full time day jobs, combined with Mt Biking and hiking in the summer and skiing in the winter. It's amazing they find the time to be as organized as they are conducting a business on the side.

Being located near Mt Snow, Steve has access to a number of saw mills and private owners where he can "cherry pick" the very best examples of these local woods. He has currently amassed over 8,000 bdft of ash, maple, oak, cherry, and a few other specialty figured woods.

Celia and I decided to take a visit to Robinson Hardwood and see Steve and Hillary one recent Saturday

morning. From Albany, it's about 75 miles each way. (If you know us, you'd know we like taking the more scenic routes).

We found Williamsville to be a picture perfect, sleepy little village. We arranged to meet them at the fire station and followed them to one of Steve's lumber sheds where we looked over his stock and even purchased a few beautifully figured maple boards.

Steve certainly has plans of making this a full time business in the future. They are a charming and energetic young couple who you will enjoy spending time with. If you are looking for something unique and special in the local North East family of woods, you should really give Robinson Hardwood a try!

They can be contacted by email or phone to make arrangements for your visit.

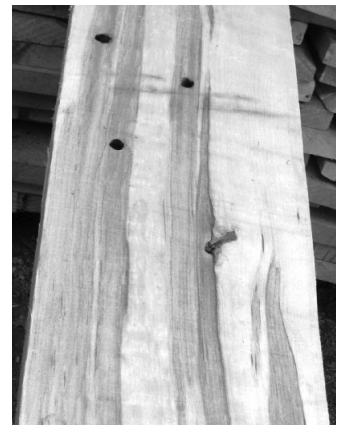
Robinson Hardwood
Steve Robinson
NHLA and
Paul Smith's Graduate
robinson092000@yahoo.com
Phone: 802-380-1667



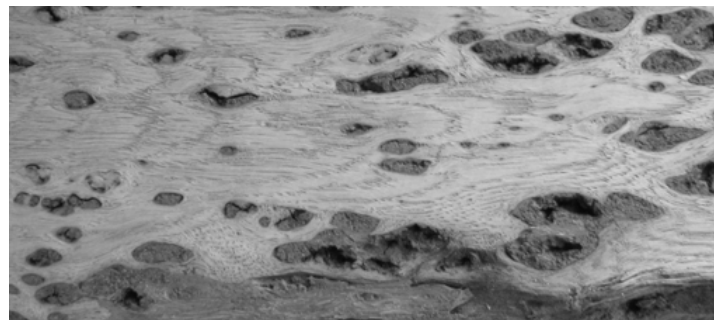
Steve Looking over stock



Stock



Sugar Maple with tap holes



Bark included Red Oak

NWA Member Profile - Ron Dewitt

By Betty Andrews

Ron DeWitt is an extremely interesting man. Since childhood he has wanted to know more about everything. His interests became focused on wood and carpentry. His father had apprenticed as a carpenter and had a big box of tools. Ron watched his father and helped him modify the first home they had. Dad made sure Ron knew how to use all the tools.



Ron retired from GE in 1989 after almost 39 years. He was always involved with metallic materials, but his avocation was woodworking.

Ron and his wife of 56 years, Judy, purchased an old farm in Salem, NY that had been on and out

of Judy's family since 1771. They retired there planning to restore it in 4-5 years. After 15 years it is still a work in progress.

Ron joined the NWA in 1992 after going to visit the first Showcase. Since then he has served in many offices of NWA – including Fiske Fund, Publications Chair and of course starting in 1995 writing “Wood of the Month”. July 2008 was #80 in the series.

Ron worked with Milan Fiske on the second showcase and initiated the move to City Center.

Milan enjoyed wood and was always posing interesting and stimulating questions about it which aroused Ron's interest. Curiosity led Ron to study wood properties, wood science, and wood identification. He took a workshop by Bruce Hadley at University of Mass on wood identification. That's when he stopped focusing on woodworking and switched to studying and collecting it.

In 1995 Ron got restless with retirement but not with wood. He and Judy purchased a Woodmizer Portable Sawmill and did custom

sawing for 10 years. Judy and Ron worked as a team. He operated the machine and Judy offloaded it. Together they sawed about 350,000 bdft of lumber. Ron says he looked at a lot of wood and “never saw a board I didn't like”.

Ron has made shaker oval boxes and furniture, spinning wheels, rocking horses, children's toys, decorative turnings, but he is most proud of making Grandmother's clocks for all four of his children.

Ron is a member of NY Forest Assn, Master Forest Owner and International Wood Collectors Society.

Ron has a collection of 1100 different wood species, which he uses when he teaches kids about how trees grow and wood identification and properties.

Last but not least Ron and Judy make about 20 gallons of maple syrup in the spring – using what else but maple trees and a wood fired evaporator.

Ron is always willing to answer questions about wood. Just give him a call! 📞

Add a Little Class to Your Life

Continued from Page 2

A detailed description of each class will be posted on the NWA Current Events Blog at woodworkerorg.blog.spot.com. If you haven't visited the Blog, you're missing out on a great way to keep up on what's happening within NWA. And don't forget that you can sign up to receive automatic e-mail notification whenever a new Blog posting is made so there's never a reason to miss out on the latest NWA information.

There's a lot in store for this season, so keep your eyes and ears open to avoid missing out on a special opportunity.

In past years some members have been disappointed to find that a class was filled before they got a chance to sign up. In order to put everyone on equal footing, special events classes will now be posted with a date on which registration opens for the class. No registrations will be accepted for these sessions before the specified date, but mark your calendar because once the registration opens it's strictly first-come, first-served until the session is filled. We do maintain a waiting list for each class, and frequently members get the chance to addend a 'sold out' class either due to a last minute cancellation or because there was enough interest to justify scheduling an additional session. So if you see a class that interests you, don't hesitate to sign up even if it's filled. Your comments and suggestions about the education program are always welcome, and many classes have come about because one of the members requested a certain topic. So if you've got some ideas, let me know and we'll see where it leads. By the same token, if you've got a new technique that you'd like to share with the membership give me a call and we'll see if we can build a class around it.

NWA has long been dedicated to advancing woodworking through education and the Classes at Stillwater are just one step toward achieving that goal. The Education Program can only get better if you're a part of it...and let's face it; a bit of class never hurt anyone. 🐾

LOST and FOUND....

Bill Van Brunt picked up two folding chairs that someone left at the picnic. The person can call me at 518-209-4481 or send me an e-mail so I can arrange to get their chairs back to them.

Adirondack Woodturners Association Monthly Meeting

By Wally Carpenter

July's meeting was focused on using the Skew Chisel in turning. Just saying the words, Skew Chisel, around a group of turners will invoke stories of destroyed and ruined pieces of work as well as the occasional horror story. In fact Ken Evans has been known to say on many occasions that a new turner should put the skew away for a couple of years while they learn the fundamentals of turning. Only after learning and abiding by those rules should they bring out the skew.

With all this fear and respect for the skew chisel, it's a wonder that anyone would want to use it. However, when used correctly, this tool will provide the most amazing results a turner could hope for.

Ken arranged to have Celia Carpenter (3 years at turning) demonstrate several specific techniques and applications for using the skew. These applications are:

- Plane cut
- V-Cut
- Short Point Leading
- Long Point Leading

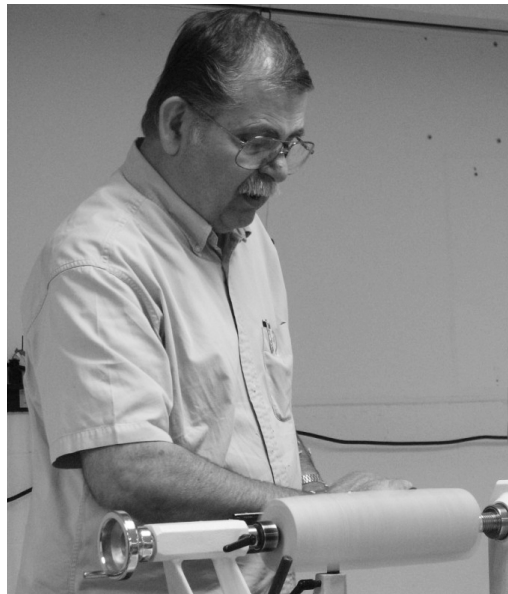
After demonstrating these uses for the skew chisel, there were many members who came up afterward for closer viewing and discussion. Thanks to Ken and Celia for sharing their skills (veteran and new).

During the monthly instant gallery, Jan took the opportunity to explain how he constructed a turning tool for a vase application. Thanks to Jan Tanek for his willingness to share his talents.

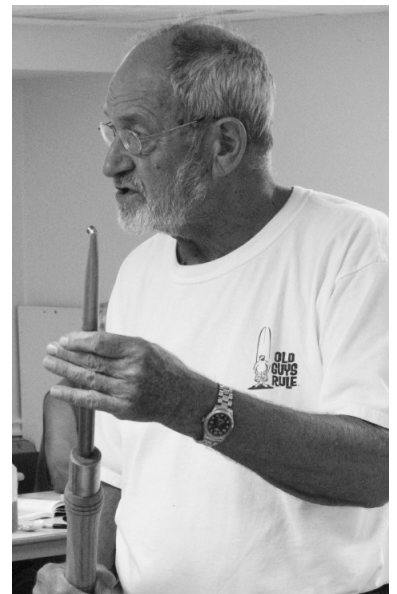
Finally, I wish to apologize for failing to include last month's meeting summary. Thank you for your understanding. 🙏



Celia and Ken showing Skew techniques



Ken teaching the skew chisel



Jan showing how he made a new tool

C L A S S I F I E D S

For Sale

Wide Pine Boards – 6/4 and 8/4 white pine, 12" to 18" wide, 8' and 10' long, many with at least one live edge. There are 36 of these, stickered and air dried 1 year. Ideal for table tops, blanket chests, and benches. All FSC Certified. Call John Sullivan, Kipp Mountain Tree Farm, Chestertown. 518-494-3292. John@kipptreefarm.com.

English Yew board for sale by Tico Vogt – I have a board of yew wood for sale. English Yew Board purchased in 1985, from a log sawn through and through. 8/4 x 9', from 13-19' wide. \$250.00 Tico Vogt 518-584-0641 tico1@verizon.net tico1@verizon.net

Cherry Veneer – Plane and sequence cut Monarch size, 11 ?" x 84" ~ 240 square ft (premium) Call John D'Allaird, 518-677-3312

NWA Picnic

Continued from Cover

very well slicing a shaving the entire length of the board, but a little too thick. I was proud of its performance and my sharpening job. Look over your shoulder plane Miller, I am coming back next year. Let's ALL give Ken some competition next year.

The Tape measure races were saved for after lunch. It was hot and sticky and competition was in the air. Yes, Yes, Yes, THE CLOWN WAS PRESENT and with a mindset to win. There were many contenders of all ages with many different designs ranging from plane tapes to frogs. The frog was pretty darn good actually, but the competition came down to THE CLOWN with the pink VAN, Chuck Walker and the dragster, and me with the Bowl Car.

At the end of the race between the pink VAN and the Bowl Car, race track timers clearly showed the winner's light on in my lane. The crowd cheered loudly as it appeared THE CLOWN had lost. However, it was obvious, there was a malfunction and more obvious the Pink Van was the faster of the cars. Alright, THE CLOWN and I hugged, had our picture taken together and vowed to race again next year. In the end, Chuck Walker's Dragster won the competition while losing a tire in the process.

THE CLOWN and I are pals now and we are out to get Chuck next year. Maybe I can borrow some grease paint for my wheels next year? Well, maybe not that good of pals.

It was a great picnic.

We do it every year in JULY. Bring your dessert, your plane, your tape measure car, your board foot entry, your lawn chair, your friends and family, and your appetite, and join us next year. How about a pie eating contest? Maybe I could win that.

See you next year!





Northeastern Woodworkers Association
P.O. Box 246
Rexford, New York 12148-0246

GENERAL MEETINGS AND SPECIAL EVENTS

For meeting cancellation
information,
call Ken Evans 753-7759
or Charlie Goddard 370-0388

SPECIAL INTEREST GROUPS

SPECIAL INTEREST GROUPS (SIGs)

Adirondack Woodturners Association - The AWA is active throughout the year. Meetings are every first Wednesday of the month (except in January and July when it is the second Wednesday), and are held at the Curtis Lumber conference room on Route 67, Ballston Spa. Beginners' sessions begin at 6 pm; the main program at 6:30 pm. Wednesday "Learn and Turn" sessions in Stillwater are also scheduled from 6 pm - 9 pm except on AWA member meeting nights. www.adirondackwoodturners.org Contact Ken Evans, 753-7759 or Kevans1@nycap.rr.com

Carver's Guild - meets every Friday at the Clifton Park Senior Center from 9:00 am to 1:00 pm. Sessions are intended for every NWA member who is interested in carving, from beginners to those wanting to learn a new technique. No reservations are necessary, just show up! Contact Bill McCormack, 233-7260.

Scroller's Guild - Meets on the third Wednesday of the month at The School at Northeast, 1821 Hamburg St., Schenectady. A beginner's session starts at 6:30 PM followed by a general meeting at 7:00 PM. Contact: Donna Phillips, (518) 372-3337 or dlphill@nycap.rr.com.

Kaatskill Woodturners - Meets the second Wednesday of each month at 7 p.m. at the Opdahl property in Hurley. Contact George Norton, (845) 331-1705.

Jim's "Hole in the Woods Gang"

Meets every Saturday, from 9:00 am until noon at Jim Kennedy's shop at 86 Guideboard Rd., in Halfmoon. (just 1 mile east of the Halfmoon Diner on Rt. 9). Our general purpose is public service work for various charitable organizations, including the Double H Hole in the Woods camp for children. We strive to foster a learning environment for our members through the projects we work on and the informal training/learning sessions given by and for our members. Sharing fellowship and relating experiences are a major part of our sessions, as we do accomplish many tasks during our times together as well. Contact Dick Flanders, (518) 393-5215 (rflander@nycap.rr.com) or Darrell Welch, (518) 477-8431 (ydwelch@taconic.net) for more information.

CHAPTERS

NWA Mid-Hudson -The chapter meets at 7:30 p.m. on the third Thursday, except July and August, at the Hurley Reformed Church. The Church is just off the the Hurley exit from Rte. 209. Right at the exit, right at the stop sign and left into the Church parking area. Contact Joe Kennedy, (845) 473-1598

NWA Sacandaga - The chapter meets at 7 p.m. on the second Wednesday of each month at Mayfield High School in the woodworking shop. Park by the section of the building that protrudes further into the parking lot and enter the nearest of the (5) doors. Contact Gary Spencer, 863-6433.