

WOODWORKERS NEWS



Northeastern
Woodworkers
Association

April 2015, Vol. 24, Number 4

April Meeting

*Thursday, April 9, 2015, 7:00 pm
Shaker Heritage Society Meeting House
Albany-Shaker Road, Albany NY*

Hand Tools.

By John Heimke

The April monthly meeting will feature NWA's recently formed Special Interest Group which is focused on the use and care of hand tools. The presentation will discuss some of the projects that are currently underway at the Herm Finkbeiner Education Center and those that are in the works for employing other hand tools.

A variety of hand tools will be on display with commentary as to their proper use and what to look for if you should be in the market for such tools. This should be a good opportunity to resolve some of those hand tool questions that you have always wondered about.

As always, members will have time to engage in their favorite woodworking conversations while enjoying the usual refreshments and deliberating over what raffle items to choose from. See you at the meeting!



The Wood Carvers Presentation

By George Rutledge

The evening of March 12th was cold and blustery and if anything it seemed colder inside the Shaker Meeting House than out. Happily though, at least 75 hearty souls attended the monthly meeting and after the usual club business and socializing they were treated to a presentation from the NWA Wood Carvers SIG. Five tables were laden with wood carvings of all types representing a range of skills from beginner to advance.

Beginning with myself, several carvers stood up to share their experiences and communicate the pleasure they take in their craft. Ernie Balch spoke of how his love of tools drew him in and of the caricature work that has absorbed him lately. Ernie claims that he is not really a wood carver but the quality of his work says otherwise. Next Diane Balch spoke of how she became involved in our group after accompanying Ernie to some



of our meetings. She also spoke of carving from the perspective of running a successful sign making business and of her experience taking a class in Lake Placid where she and fellow carver Jacquie

Continued on Page 2

OFFICERS

President - Rich Duval
rduval@nycap.rr.com

Vice President - John Heimke
heimkj@sage.edu

Secretary - Nancy Reilly
nreilly@nycap.rr.com

Treasurer - Austin Spang 393-2859
spang@nycap.rr.com

Past President - Karen Arkison
nydivergirl@earthlink.net

Historian - Wayne Distin 674-4171
wdistin@nycap.rr.com

Executive Secretary - Charlie Goddard
370-0388 Cgodd@aol.com



CHAIRPERSONS

Mid-Hudson Chapter

John VanBuren, President
(845) 444-8281

Sacandaga Chapter

Co-Chairpersons

Jim Hopkins - 725-7322

Don Wilson - 883-3698

Gary Spencer - 863-6433

Education

Stan Blanchard

Tom Moran

nwaeducation@gmail.com

Youth Programs

Wayne Distin - 674-4171

wdistin@nycap.rr.com

Fiske Fund

Max Bloomfield

max.bloomfield@gmail.com

Hospitality

Francis Legac

Library

Darrel Welch - 477-8431

ydwelch@fairpoint.net

Membership

Peter Lofrumento

nwamembers1@gmail.com

Programs

John Heimke

heimkj@sage.edu

Publications

Wally Carpenter - 434-1776

c.j.carpenter@earthlink.net

Publicity

OPEN

Showcase Chair

Ken Evans - 753-7759

kevans1@nycap.rr.com



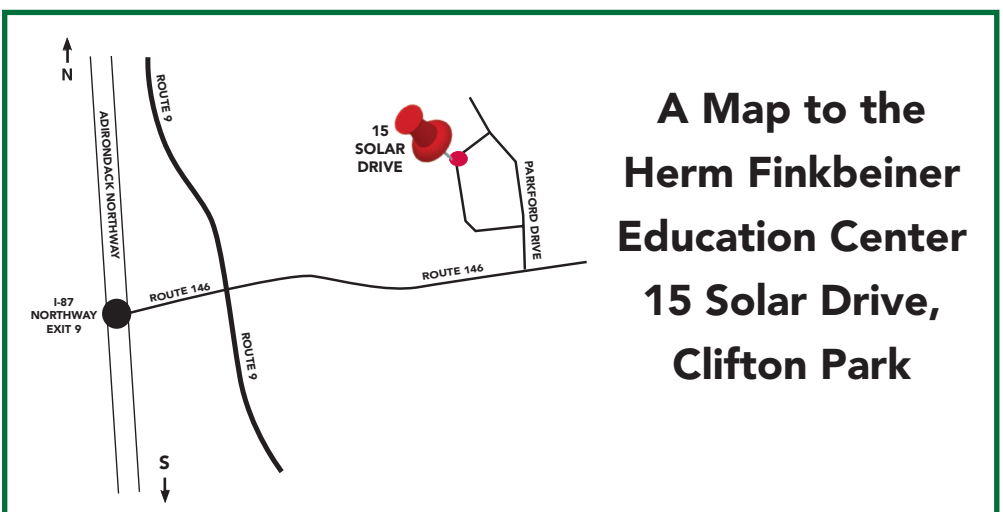
UNLESS OTHERWISE NOTED, PHONE
NUMBERS ARE IN AREA CODE 518

The Wood Carvers Presentation

Continued from Cover

learned to carve and paint beautiful small animals. Tony Lisosky spoke of carving Santas as well as his recent opus, the Indian Chief, and the techniques of carving bowls. Bonnie Lisosky talked of her deep appreciation for the help of her mentor in Chip Carving, Jon Karl, who could not be present. The aforementioned Jacquie Donahoe related that she quickly dove into the deep end by going from small novice pieces to taking a class in Carousel Horse Carving. If you were there I think you will agree that if Jacquie ever tires of wood carving she could make it in Stand-up with her dry wit and deadpan delivery. Jack "The Knife" Connell concluded the planned portion of our program with a discussion of the approach he takes to carving masks and how he uses it as a vehicle to introduce young people to the craft. Things went so well that Jon Cochran and Ken and Maria Witkins were moved to give impromptu testimony to their happy involvement with the Wood Carvers.

Our main hope in offering this presentation was to provide a picture to our fellow NWA members of the great joy we take in carving and the fun we have when we get together to do so as a group. We also want you to know that carving like any other wood working skill is accessible to anyone who has but the desire to learn and all are welcome to find out for themselves by sitting in with us at one of our Thursday evening meetings. Call me biased, but I think we nailed it.



**A Map to the
Herm Finkbeiner
Education Center
15 Solar Drive,
Clifton Park**

Basic Cabinet & Door Making Course

By Peter K. Lofrumento



The Basic Cabinet and Door Making Course taught by **John Olenik** was a scheduled 5 session experience into the world of fine woodworking. John was gracious enough to host the class in his home workshop for 10 students. The first session started off with John showing the class a carcass of a cabinet and then demonstrated how laying out wood grain patterns, adding moldings and applying the proper finish can turn an ordinary Kitchen Cabinet into a fine piece of furniture.

The members of the class all participated by asking numerous questions and assisting John in the construction of the Cherry "Class Cabinet" which was signed by all and was raffled off at Showcase.

A valuable by-product of taking an NWA course and especially this course, is the experience of seeing other members' workshops, how they are organized and function while building a project. John's shop (which is in the lower level of his beautiful home) is small, meticulously clean and strategically organized for efficiency.

Other benefits of taking an NWA course is to see how our woodworkers use various power equipment, hand tools and jigs which the student might not have access to or is thinking of buying. Sharing information amongst the group about informational websites, where to get the best deals on tools and supplies... and of course, meeting other members and developing friendships that extend long after the course has ended are all aspects that contribute to a positive woodworking experience.

John is a superlative artisan and a wonderful Instructor. Both the beginner and the experienced woodworker will gain new insights into the finesse of fine woodworking when they sign up for his course the next time it is offered.



WOODWORKERS NEWS

is published by the Northeastern Woodworkers Association for its members. The Association's aim is to provide a common meeting ground for lovers of woodworking who want to know more about wood and the techniques for forming it. The newsletter is published monthly. The newsletter is available online at www.woodworker.org



Your next issue of
Woodworkers News

will be published
in early May

Copy deadline: April 15

Wally Carpenter, Editor
(518) 434-1776

c.j.carpenter@earthlink.net
Elizabeth Keays Graphic Artist
Designer



WEBSITE(S)

www.woodworker.org
www.nwawoodworkingshow.org

Webmaster - Kurt Hertzog
kurt@kurthertzog.com



NORTHEASTERN WOODWORKERS ASSOCIATION

P.O. BOX 246
Rexford, New York 12148



KWA News

By Wally Cook

Drunken Bottlestoppers: Keith Tompkins performed his magic in demonstrating multiaxis bottlestoppers. These stoppers have proved extremely popular in their depiction of a martini glass balanced on one or two corks. In actuality, the glass and corks are all part of one piece of wood.

Keith uses stainless steel stopper systems (see S.S. Niles) and the Joyner eccentric turning plate to create the bottlestopper. The blank is screwed onto the Niles stopper mandrel, so the first step is to drill a hole in the blank to fit the mandrel stud. Keith used a 9/32" drill and then tapped the hole to fit the thread.

Divide the blank into segments for the martini goblet and one or two corks. Keith likes to use holly, but for this demo maple was the wood of choice. The goblet is shaped in the same fashion as a regular sized goblet: hollow the inside of the glass, then shape the outside of the glass working from rim to stem and base.

Once the goblet base is formed, Keith likes to carefully refine the base with a skew to ensure a good visual separation from the cork. This work is further refined as the top of the cork is flattened in preparation for changing the axis.

The offset axis is set to have the base of the goblet just teetering on the edge of the cork. It is shaped with light cuts to appear to just balance on the second cork. Again the axis is reset to define the second cork, which is on the same plane as the



Keith Tompkins explains his approach for turning bottle stoppers



These bottlestoppers were turned from one piece of holly (excluding olives)

goblet. The total effect looks like a balancing act among the goblet, cork#1, and cork#2.

The corks are now subject to pyrography in order to create the telltale voids in the cork body. A coat of orange shellac completes the transformation of the corks.

The inside and outside of the martini glass are sealed with clear acrylic to prevent bleeding of the transparent casting material which serves as the 'liquid refreshment'. Add a turned olive or cherry (with toothpick or stem) and drinks are served!

Kudos: Steve Sherman had two of his works installed in the permanent display at the Peabody Essex Museum in Massachusetts: *Spiritus* and *Neue Reliquaire*. The work among 47 pieces donated from the collection of Robert M. and Lillian Montalto Bohlen. The Bohlen's aim has been to show that woodworking can be fine art. The installation included top turners such as Bin Pho, Ron Gerton, Stuart Mortimer, David Mobley, and others. The installation and display has been published in a new book, *Audacious: The Fine Art of Wood*. The exhibition will be on view at the Peabody Essex in Salem Massachusetts from February 21 to June 21, 2015.



Steve Sherman's vessel was installed in the Peabody Essex Museum

Upcoming: Don't miss our next program at the Opdahl Building! John Franklin plans a full day program on Saturday, April 11: 5 Steps to a Better Turning with SMWFE (Shape, Material, Wow, Finish, and Execution). Cost of the class is \$25 per person. Send a note to John to sign up: johnfranklin2001@aol.com.



John Franklin's 'Snakes on a Plane'

CHAPTER NEWS

Mid-Hudson Chapter News

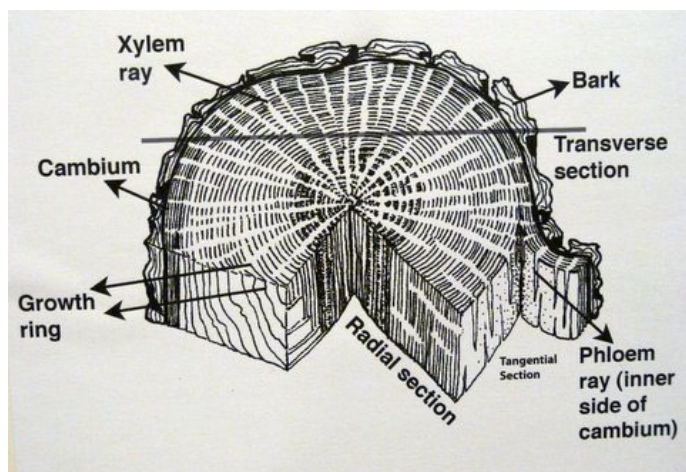
By Wally Cook

Wood ID 101: Chuck Walker provided a terrific exposition on wood identification at the chapter meeting. Many woods look similar, but differences may be found by closely examining their cross-sections. Sections can be radial, transverse, or tangential.

The process of investigation the end grain is assisted by soaking the wood and cutting with a very sharp knife. The wood is made up of bundles of vertical 'straws' that act as conduits for water and nutritional material being transported from roots to leaves. When cut across these fibers, softwoods are typically five units wide, while hardwoods are eight units wide.



Chuck Walker provides a summary of key variables in wood identification



Elements of a log cross-section

Cut across the end grain, the vertical fibers are displayed as pores. Generally, woods can be described in one of three categories: a) ring porous b) diffuse porous, or c) mixed. Softwoods do not generally display pores...rather, they have 'resin canals'.

Ring porous woods show a cross-section of pores located close to the early growth rings. Cells may be larger or coarse. Woods in this category are red and white oak, hickory, ash, and black locust. Pores are described as open or filled. Red oak is a wood with open pores, allowing it to conduct water through its entire length. White oak pores are closed – filled with tyloses, making this wood more watertight.

Diffuse porous woods display an evenly distributed array of pores. The number of pores may also be greater. Examples include maple, cherry, tulip poplar, sycamore, and basswood.

Mixed porous woods do not show a distinct pattern of pores. Examples include walnut and butternut. Walnut may have areas of longer pores at the beginning of the growth rings. Hondouras mahogany will display long and short pores.

Not all fibers are vertical. Horizontal conduits through the wood's cross-section are called medullary rays. White oak displays a characteristic ray pattern, such as sycamore. Alder is unique in that it will exhibit one very large ray.

MOTY: Jim Lee was voted Chapter Member of the Year. Jim will be honored at the chapter dinner on April 17. Checks for the dinner should be sent to Ron Roberts at PO Box 371, Staatsburg, NY 12580 no later than April 8. Come for a great time and remember to make something for the raffle table!



Jim Lee is the chapter Member of the Year!

Upcoming Presentations: Ghent Wood Products provided a display and discussion at the March meeting. The April presentation will feature an interesting topic: Homeopathic Medicine for Woodworkers.



Dap Cole shows off his cane made on Joe Gaddis' legacy machine

Badge Raffle Winner

By Peter K. Lofrumento

Congratulations to Barry Ginsberg!

Barry Ginsberg was our March Badge Raffle Winner who always wears his new style Membership Badge. He has been an active member since 2013. Lately, he is focusing on making guitars under the tutelage of Eric Marczak. He displayed his first guitar at last September's NWA's Open House and is in the process of finishing his 2nd guitar. He is also a Showcase Volunteer. You might have chatted with him about making guitars at the Membership Booth where his guitar was on display. He has extended his membership for an additional year, so the next time he will have to pay dues will be in September 2017!

The winners of the Badge Raffle have the option to pay this year's dues if they haven't done so, apply the free membership prize to next year's dues or transfer the membership prize to a friend...or, receive a smart looking NWA Cap as a prize!

Let us know if you want the new style Member Badge. Send an email to nwamembers1@gmail.com with "Need Badge" in the title and we will make you a new badge and mail it out before the next meeting.

Remember, always wear your Badge...so everyone knows your name!

C L A S S I F I E D S

Barn Full of Wood Sale, Friday, April 17 9-5pm — Saturday, April 18 9-3pm

- Logs sawn through & through
- 2" Slabs
- Old Barn Chestnut
- ¼ sawn White Oak flooring
- Other Odds (Apple, Maple, Ash, White Oak)
- Alaskan Yellow Cedar timber
- Logging "bones" odds and ends
- Lots more!

Rod Wilson - 10 Pearl Street, Cambridge, NY or call 518-677-8955

Free to a good home – Two cast iron open-web table saw wings for a Craftsman contractor saw.

For Sale – Drill press, floor model Jet JDP-17M. Excellent condition; \$300.

Contact John Michne, 371-6690.

Powermatic Lathe - Model 3520B: \$1,995

Jet 14" Band saw - WBS 14CS with riser block: \$250

DE Walt Scroll Saw - Model 7880: \$125

Contact Dave Lasinski, (518) 439-0617, dhlasin@nycap.rr.com

Visit the
Northeastern Woodworkers Association
Website at
www.woodworker.org

April Meeting

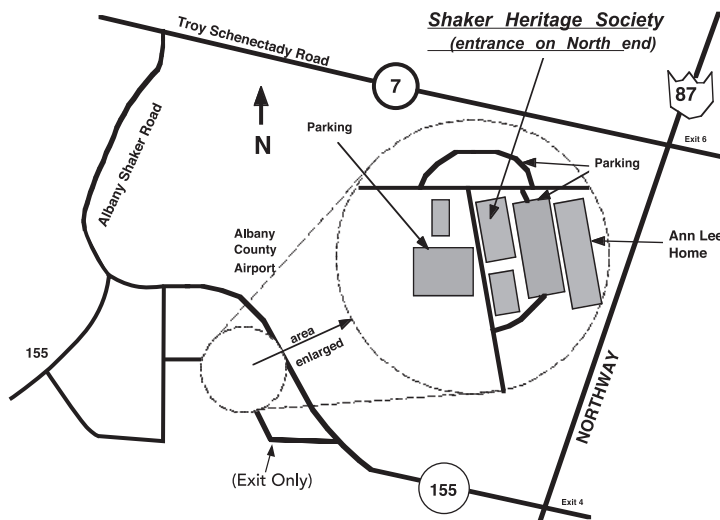
Thursday, April 9, 2015, 7:00 pm
Shaker Heritage Society Meeting House
Albany-Shaker Road, Albany NY

GENERAL MEETINGS AND SPECIAL EVENTS

For meeting cancellation information,
call Ken Evans 753-7759
or Charlie Goddard 370-0388

NWA Program Schedule 2014-2015

May 14th, 2015
Scrollers Program



SPECIAL INTEREST GROUPS (SIGs)

Adirondack Woodturners Association (AWA) - The AWA is active throughout the year. Meetings are held the first Wednesday of the month (except in January and July when it is the second Wednesday), and are held at the NWA Learning Center located at 15 Solar Drive, Clifton Park, NY from 6:30 PM to 9:00PM.

Wednesday "Learn and Turn" sessions occur on all other Wednesdays at the NWA Learning Center. These sessions run 6pm-9pm. www.adirondackwoodturners.com **Contact:** Ken Evans, 518-753-7759 or kevans1@nycap.rr.com

Scroller's Guild - Meets on the first and third Wednesday of the month (Starting Nov. 19) at the NWA Learning Center located at 15 Solar Drive, Clifton Park, NY. A beginner's session starts at 6:30 PM followed by a general meeting at 7:00 PM. **Contact:** Jeanne Aldous at AMJAMtat2@aol.com or Barbara Nottke at scroller87@aol.com or 869-6268.

Kaatskill Woodturners - Meets the second Wednesday of each month at 7 p.m. at the Opdahl property in Hurley, NY. **Contact:** Matt Clark, (845) 454-9387.

NWA Crafters - Meets every Saturday and Tuesday, from 9:00 am until noon at the NWA Learning Center located at 15 Solar Drive, Clifton Park, NY. The Crafters provide public service woodworking for various charitable organizations, including the Double H Hole in the Woods camp for children and the GE Elfuns toy modifications group, and the Make A Wish Foundation. Sharing information, fellowship, and relating experiences are a major part of these sessions. **Contact:** Dave Axton (518) 237-6942, daxton@nycap.rr.com, Wayne Distin (518) 674-4171, wdistin@nycap.rr.com Steve Schoenberg (518-371-1260), sschoen1@nycap.rr.com for more information.

The NWA Wood Carvers SIG - Meet each Thursday at 5:30 p.m. until 9 p.m. all year except the 2nd Thursday of each month at the NWA Learning Center located at 15 Solar Drive, Clifton Park, NY. Programs are determined at the previous weekly sessions. Discussions start at 7PM. The goal is to promote the art of Wood Carving. Individual private sessions are available Wednesday evenings by appointment. Wood, tools, and patterns are available. **Contact:** Ray Gannon. LoRayG@Gmail.com

Hand Tool SIG - Meets on the 2nd and 4th Wednesday of each month at 8pm in the Herm Finkbeiner Education Center at 15 Solar Dr, Clifton Park, NY. **Contact** Dave Parkis for further details: dparkis@nycap.rr.com

CHAPTERS

NWA Mid-Hudson - The chapter meets at 7:30 p.m. on the third Thursday, except July and August, at the Hurley Reformed Church. The Church is just off the the Hurley exit from Rte. 209. Right at the exit, right at the stop sign and left into the Church parking area. **Contact:** Pete Chast, pchastnow@gmail.com.

NWA Sacandaga - The chapter meets at 7 p.m. on the Second Wednesday of each month at 55 Second Avenue, Mayfield, NY. **Contact:** Gary Spencer, 518-863-6433.

SPECIAL INTEREST GROUPS